

# Screening of Restriction Enzymes for the Development of Restriction Fragment

*by* Stalis Norma Ethica

---

**Submission date:** 03-Aug-2020 03:43PM (UTC+0700)

**Submission ID:** 1365436778

**File name:** triction\_Enzymes\_for\_the\_Development\_of\_Restriction\_Fragment.pdf (235.94K)

**Word count:** 2701

**Character count:** 15087

Ethica et al., 2019

Volume 5 Issue 1, pp. 62-72

Date of Publication: 9<sup>th</sup> April 2019

DOI-<https://dx.doi.org/10.20319/ijhls.2019.51.6272>

This paper can be cited as: Ethica, S. N., Semiarti, E., Raharjo, T. J., Oedjijono, O., Sulistyningtyas, A. R., & Darmawati, S. (2019). Screening of Restriction Enzymes for the Development of Restriction Fragment-Based, Genomic Biomarker of *Alcaligenes Javaensis*. LIFE: International Journal of Health and Life-Sciences, 5(1), 62-72.

This work is licensed under the Creative Commons Attribution-Non Commercial 4.0 International License. To view a copy of this license, visit <http://creativecommons.org/licenses/by-nc/4.0/> or send a letter to Creative Commons, PO Box 1866, Mountain View, CA 94042, USA.

## SCREENING OF RESTRICTION ENZYMES FOR THE DEVELOPMENT OF RESTRICTION FRAGMENT-BASED, GENOMIC BIOMARKER OF *ALCALIGENES JAVAENSIS*

**Stalis Norma Ethica**  
Faculty of Nursing and Health Sciences, Universitas Muhammadiyah Semarang, Indonesia  
[norma@unimus.ac.id](mailto:norma@unimus.ac.id)

**Endang Semiarti**  
Faculty of Biology, Universitas Gadjah Mada, Yogyakarta, Indonesia  
[endsemi@ugm.ac.id](mailto:endsemi@ugm.ac.id)

**Tri Joko Raharjo**  
Chemistry Department, Faculty of Mathematics and Natural Sciences, Universitas Gadjah Mada, Yogyakarta, Indonesia  
[trijr\\_mipa@ugm.ac.id](mailto:trijr_mipa@ugm.ac.id)

**Oedjijono Oedjijono**  
Faculty of Biology, Universitas Jenderal Soedirman, Purwokerto, Indonesia,  
[oedjijono@gmail.com](mailto:oedjijono@gmail.com)

**Ayu Rahmawati Sulistyningtyas**  
Faculty of Nursing and Health Sciences, Universitas Muhammadiyah Semarang, Indonesia  
[ayurs@unimus.ac.id](mailto:ayurs@unimus.ac.id)

**Sri Darmawati**  
Faculty of Nursing and Health Sciences, Universitas Muhammadiyah Semarang, Indonesia  
[ciciekdarma@unimus.ac.id](mailto:ciciekdarma@unimus.ac.id)

## Abstract

*Alcaligenes javaensis* is a food-borne, Gram-negative bacterium, which has the closest relationship with *Alcaligenes faecalis* commonly causing contamination of clinical equipment and infection on humans. Hence, the development of a biomarker for members of genus *Alcaligenes* including *A.javaensis* is needed for early detection of this bacterium. This research aimed to screen the performance of 5 restriction enzymes consisting of *EcoRV*, *Hind III*, *NotI*, *Sall*, and *BgIII* as singles and in combinations to produce specific pattern of restricted, genomic DNA fragments of *A.javaensis*. Total DNA was first extracted from subcultured *A.javaensis* cells using DNA isolation kit and the obtained DNA isolate was then subjected to enzyme restrictions *in vitro*. Later, the restricted DNA fragments were evaluated using agarose gel electrophoresis method. Results showed that only the *EcoRV*-*BgIII*-*HindIII* combination within a restriction process of 18 h could produce smaller-sized DNA bands, while those from other combinations (5 enzymes as singles and their 2-combinations) could not do so. As conclusion, the combination of *EcoRV*-*BgIII*-*HindIII* is the most potential among the evaluated endonucleases to be used as a genomic biomarker for *A.javaensis*.

### Keywords

Restriction Enzyme, Genomic Biomarker, *Alcaligenes Javaensis*, *Alcaligenes Faecalis*, Bacterial Detection

## 1. Introduction

*Alcaligenes javaensis* is a food-borne, obligate aerobic, Gram-negative isolated from Purwokerto region of Central Java, Indonesia (Ethica *et al.*, 2013a; 2013b; Ethica & Raharjo, 2014; 2018). The bacterium has the closest relationship with *Alcaligenes faecalis*, a bacterium commonly reported as the cause of contamination of medical equipments and samples (Ethica *et al.*, 2017; 2018; Kavuncuoglu *et al.*, 2010; Bizet and Bizet, 1997). Having been isolated from various clinical materials, this opportunistic pathogen is responsible for many infections including pancreatic abscess and corneal ulcer. There are bare reports in the literature of the frequency of recovery of *A.faecalis* from human samples (Mordi *et al.*, 2013; Kavuncuoglu *et al.*, 2010; Berry, 1967; Aisenberg *et al.*, 2004; Hwang *et al.*, 2009).

There are morphological characteristics differing *A.faecalis* from other *pseudomonads* such as its motility with peritrichous flagella, and its non-pigmented, rod-shaped cells (Bizet and

Bizet, 1997). However, there are many similarities between members of genus *Alcaligenes* and other bacterial genus leading to high dynamics of species transfer from and to the genus *Alcaligenes* in taxonomy. Furthermore, several other *Alcaligenes* members such as *A.denitrificans*, *A.cupidus*, *A.pacificus*, *A.venustus*, *A.aestus*, and *A.aquamarinus* had been transferred to other genus causing changes of their names into *Achromobacter denitrificans*, *Deleya cupida*, *Deleya pacifica*, *Deleya venusta*, *Deleya aesta*, and *Halomonas aquamarinus*, respectively (Garrity, 2004).

### 1.1 Importance of Biomarker Development

Considering high dynamics in taxonomy of genus *Alcaligenes*, it is important to develop of a biomarker for members of this group of infectious bacteria including *A.javaensis* species. Restriction endonucleases and agarose gel electrophoresis have been widely used to indicate extensive nucleotide sequence diversity of various microorganisms (Lansman *et al.* 1981). Restriction enzymes *HpaII*, *AvaI*, *HhaI* and *HaeII* had been found useful to distinguish *Xenopus laevis* somatic (erythrocyte) rDNA from amplified rDNA (Bird and Southern, 1978). It is possible to detect the organism in an environment using PCR and restriction enzyme analysis. For example, Johnston and Aust in 1994 could successfully detect fungi species, *Phanerochaete chrysosporium*, in soil by PCR and restriction enzyme analysis. Nevertheless, there are barely efforts to develop biomarkers to distinguish *A.javaensis* from other pathogens as part of its eradication steps.

This research aimed to screen a group of restriction enzymes consisting of EcoRV, Hind III, NotI, Sall BgIII as singles as well as combinations of EcoRV-BgIII, NotI-Sall, EcoRV-BgIII-HindIII, and EcoRV-BgIII-HindIII based on restriction ability on genomic DNA of *Alcaligenes javaensis* to assess their potential to be used as a restriction fragment-based biomarker of the infectious bacterium.

## 2. Methods

### 2.1 Materials

Samples used in this research were overnight-cultured of *A.javaensis* cells in LB medium, isopropanol, ethanol and 70%, RNA-se free water. A DNA isolation kit A1123 for Gram-negative bacteria (Promega). Materials needed for restriction process and DNA band evaluation were 5 common restriction enzymes: EcoRV (Biosystem), NotI (Promega), BglII (Nippon), Hind

III (Promega) dan Sall (Promega). Reagents for restriction process included ddH<sub>2</sub>O, Acetylated BSA, buffer 10x, special buffer (E, D and H, as suggested by enzyme manufacturer) agarose (Merck), buffer, DNA marker, and ethidium bromide. Product after restriction was extracted using phenol-chloroform method (Sambrook *et al.*, 1989). Instruments needed in this study were centrifugation machine (Thermo), vortex machine, electrophoresis, and UV lamp. Equipment used for all works included 1.5-ml micro centrifuge tubes, water-bath, ice block, micropipette (Gilson), pipette tips, and absorbent paper.

## 2.2 Bactrial Genomic DNA Isolation

The main steps of method applied in this research were isolation of bacterial genomic DNA (Ethica *et al.* 2013a; 2013b), process of enzyme restriction, extraction of restriction products and analysis of DNA products. First, genomic DNA isolation process was carried out by following instructions of the manufacturer (Promega) for Gram-negative bacteria omitting the use of cell lysis solution.

## 2.3 Enzyme Restriction Process

Enzyme restriction process on genomic DNA was carried out based on manufacturer's manual (Biosystem, Promega and Nippon), where minimal amount of DNA was used to correspond with 10 unit of enzyme in a total 20- $\mu$ l reaction volume for each sample. Restriction duration was set 4 min as the shortest duration suggested by the manufacturers, and 18 min as part of investigation on critical time for the restriction process. Table 1 described the components of each of 9 samples representing 5 enzymes of EcoRV, Hind III, NotI, Sall, and BglII as singles, 2-combinations and 3-combinations. Each of all samples with all its set components including DNA, but without the enzyme was placed in a micro-centrifuge, and then mixed by pipetting. Next, enzyme was added followed by microcentrifugation for few seconds. The obtained DNA-restriction enzyme mixture was incubated for 18 hours.

Extraction of DNA products resulted from enzyme restriction on bacterial genomic DNA was carried out using phenol-chloroform method (Ethica *et al.* 2013a). Evaluation of extracted DNA products after the restriction process was conducted using agarose gel electrophoresis after previously checked by spectrophotometer for its OD<sub>600</sub> (Raharjo *et al.*, 2012). The EtBr-stained gel with the loaded sample was run under 50 V for 60 min for each sample.

### 3. Results and Discussion

The necessity to identify a group of restriction enzymes generating unique DNA band patterns distinguishable from all other bacteria for diagnostic purposes have been widely reported. Such information is required to design and developed a PCR-RFLP (Polymerase Chain Reaction—Restriction Fragment Length Polymorphism) assay leading to a more specific, sensible and faster detection of bacterium (Mandakovic *et al.*, 2016).

In this study, the performance of 5 restriction enzymes and their combinations in providing specific pattern of DNA cuts when subjected to bacterial genomic DNA of *Alcaligenes javaensis* was tested and evaluated. Such evaluation is required to determine the potential of a restriction enzyme to be used for biomarking *A.javaensis* species, giving this infectious organism genetic specificity among other pathogens sharing high phenotypic character similarities.

#### 3.1 Genomic DNA Isolation

Genomic DNA isolation of freshly cultured *A.javaensis* was carried out to obtain DNA sample as subject of enzyme restriction process by several enzymes and their combinations set in this study. As the first screening effort to determine restriction enzymes potential to be used as a genomic biomarker of *A.javaensis*, 5 restriction enzymes such as EcoRV, Hind III, NotI, SalI, and BgIII because these enzymes are commonly used and widely available in the market. Bacterial genomic DNA was successfully obtained from the isolation step, which appeared as transparent white residue at the bottom of the micro-centrifuge tube after the last step of isolation process.

#### 3.2 Enzyme Restriction

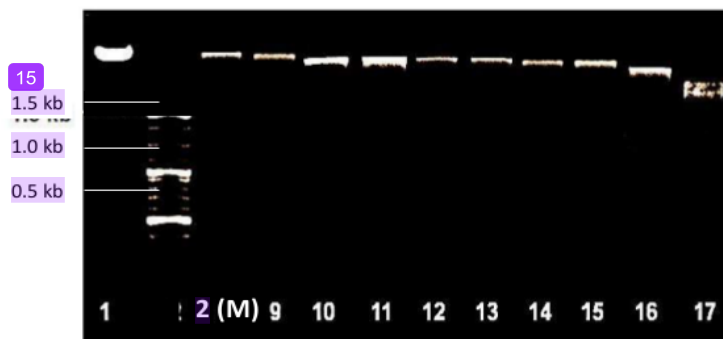
Restriction process was carried out in 18-h durations. The 4-h restriction duration was suggested by most manufacturers of enzyme used in this study. However, the 18-h one was set in this study to make sure that the restriction process on bacterial genomic DNA could complete also considering that the cut DNA band did not show any signs of degradation after 18-h restriction process. For each test, an Eppendorf tube was prepared, and then filled with mixture as described in Table 1, and then coded accordingly. Total of 16 tubes represented 15 different samples including a control sample containing similar ingredients but without any restriction enzyme added.

**Table 1:** Composition of Mixture in each Sample and Control used in Restriction Process

Component	Sample Code and Content					
	C	E	H	N	S	B
DNA isolate (μl)	4	1.5	1.5	1.5	1.5	1.5
Acetylated BSA (μl)	-	0.2	0.2	0.2	0.2	0.2
Buffer 10x (μl)	-	2.0 (buffer H)	2.0 (buffer E)	2.0 (buffer D)	2.0 (buffer D)	2.0 (buffer H)
Enzyme (unit)	-	10	10	10	10	10
ddH <sub>2</sub> O (μl)	16	15.3	15.3	15.3	15.3	15.3
Total volume (μl)	20	20.0	20.0	20.0	20.0	20.0
Incubation temp.(°C)	N/A	37	37	37	37	37
T. Termination (°C)	N/A	80	65	65	65	65

Note: C = control, E: EcoRV, N: NotI, B: BglII, H: HIndII. S: Sall

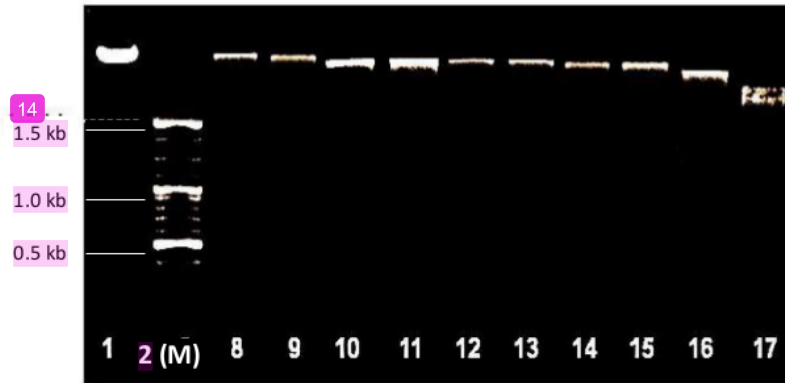
Results of the restriction performance test of each of 5 enzymes as singles, 2- and 3-combinations could be seen in Figure 1 and 2, respectively. As seen in Figure 1, each of 5 enzymes within durations of 18 h could not produce restriction products since the size of each genomic DNA appeared in the same length showing no difference with genomic DNA. Clearly there were no DNA cuts from the restriction enzymes when used as singles, although some shadings were observed on bands other than that from NotI.



**Figure 1:** Restriction Enzyme Performance on Genomic DNA of *Alcaligenes faecalis*. Lane 1. Bacterial genomic DNA (uncut). Lane 2 (M) = 1,5 kb DNA ladder (Marker). Lane 3 = EcoRV. Lane 4 = HindIII. Lane 5 = NotI. Lane 6 = Sall. Lane 7 = BglII.

Further test using combination of 2 and 3 enzymes from total of 4 enzymes (EcoRV, HindIII, Sall, and BglII) was conducted. This time NotI enzyme was omitted because per

previous result, DNA band from restriction treatment using single NotI did not show any shading, which means clearly NotI could not give any restriction effect to *Alcaligenes* genomic DNA. Results of cutting using 2 and 3-enzyme combinations are displayed in Figure 2.



**Figure 2:** Restriction Enzyme Performance on Genomic DNA of *A. javaensis*. Lane 1. Bacterial genomic DNA (uncut). Lane 2 (M) = 1,5 kb DNA ladder (Marker). Lane 8 = *EcoRV* – *HindIII*. Lane 9 = *EcoRV* – *Sall*. Lane 10 = *EcoRV* – *BglII*. Lane 11 = *HindII* – *Sall*. Lane 12 = *HindIII* – *BglII*. Lane 13 = *Sall* – *BglII*. Lane 14 = *EcoRV* – *Sall* – *BglII*. Lane 15 = *EcoRV* – *HindIII* – *BglII*. Lane 16 = *EcoRV* – *HindIII* – *Sall*. Lane 17 = *HindIII* – *Sall* – *BglII*.

Scientists have used biomarkers to distinguish the microorganisms causing the infection, or to assess the survival chances of patients infected by them. Bacterial genes, which are part of bacterial genomes, quantify the state of acute bacterial sepsis, so they could be regarded as biomarkers. (Pankla *et al.*, 2009; Panchot *et al.*, 2006). A whole-genome approach could be used to identify biomarkers, one of which is using restriction enzymes. In fact, restriction enzyme is the basic in DNA analysis and DNA fingerprinting for cancer studies (Samuelsson *et al.*, 2010).

Restriction endonucleases are known as enzymes capable of identifying specific DNA through cutting up process, which could produce double-stranded cut in a nucleotide sequence. Abalaka (2011) stated that inside a bacterial host, the restriction enzymes selectively cut up foreign DNA in a process called restriction; host DNA is methylated by a modification enzyme (a methylase) to protect it from the restriction enzyme's activity. To cut the DNA, a restriction enzyme makes two incisions, once through each sugar-phosphate backbone or double helix. Results of this study demonstrated how the combination of *EcoRV*-*BglII*-*HindIII* endonucleases within restriction duration of 18 h could produce distinct restriction products from *A.javaensis*



genomic DNA. By far, this result is the first report about a group of restriction enzymes tested for their ability to detect this species.

In many cases combinations of several restrictions are required to cut out genomic DNA of bacteria (Murray *et al.*, 1990; Mise and Miyahara, 1993). However, in the case of *P. Salmonis* it is possible that a single restriction enzyme *PmaCI* could generate several informative and easily recognizable bands in the 16S rDNA gene of the organism (Mandakovic *et al.*, 2016). Although the use of single endonuclease seems to be less complicated for diagnostic purpose of infectious bacterium, it is evidence that combination of EcoRV-BglII-HindIII could produce distinct cut on genomic DNA of *A.javaensis* showing its potential in the development of restriction fragment-based biomarker of the bacterium.

#### 4. Conclusion

Results of this experiment showed that the ability of 5 enzymes, EcoRV, HindIII, NotI, Sall, and BglII, when used as singles within restriction durations 18 hours on genomic DNA of *A.javaensis* species could not be detected. Yet, a 2-combination of EcoRV-BglII as well as a 3-combination of EcoRV-BglII-HindIII within the same duration of 18 h could show restriction ability proven by the presence of 2 DNA bands which sizes were different (smaller) than that of bacterial genomic DNA on electrophoresis gel. It means that among all endonucleases tested in this study, the combination of EcoRV-BglII-HindIII is the most potential to be developed as restriction fragment-based biomarker for the infectious bacterium *A.javaensis*.

#### 5. Acknowledgment

<sup>3</sup> The authors acknowledge Program Bantuan Seminar Luar Negeri (BSLN) from Dirjen Penguatan Riset dan Pengembangan, Kementerian Riset Teknologi dan Pendidikan Tinggi Indonesia (Kemenristek Dikti) for the financial and technical support on preparation of the manuscript. The authors also deeply thank to Mr. Oedjijono and Dr. Endang Semiarti M.S., M.Sc. for providing bacterial sample and restriction enzymes used in this study.

#### <sup>4</sup> References

Abalaka, M. E. (2011). Restriction enzymes and their uses in specific sequencing to produce predictable fragment of DNA making genetic engineering simply. Journal of

# Screening of Restriction Enzymes for the Development of Restriction Fragment

## ORIGINALITY REPORT

13%

SIMILARITY INDEX

10%

INTERNET SOURCES

6%

PUBLICATIONS

9%

STUDENT PAPERS

## PRIMARY SOURCES

1	<a href="http://bio4esobil2009.wordpress.com">bio4esobil2009.wordpress.com</a> Internet Source	2%
2	<a href="http://www.fpce.up.pt">www.fpce.up.pt</a> Internet Source	2%
3	<a href="http://link.springer.com">link.springer.com</a> Internet Source	1%
4	Submitted to University of Bedfordshire Student Paper	1%
5	Submitted to University of California, Merced Student Paper	1%
6	<a href="http://ijalsr.org">ijalsr.org</a> Internet Source	1%
7	<a href="http://journal.ugm.ac.id">journal.ugm.ac.id</a> Internet Source	1%
8	Submitted to University of Minnesota System Student Paper	1%
9	Zhen-Yu Sun. "A $^{19}\text{F}$ -NMR study of the	

---

membrane-binding region of D-lactate dehydrogenase of *escherichia coli*", Protein Science, 11/1993

Publication

1%

---

10

Tri Hariti, Sri Rejeki, Ernawati. "Strengthening soft skills as the character of student nurses through the preceptorship management model", Enfermería Clínica, 2020

Publication

1%

---

11

Stalis Norma Ethica, Sri Darmawati, Sri Sinto Dewi, Nurrahman Nurrahman, Ayu Rahmawati Sulistyanyngtyas. "Streptolysin Encoding Genes sagC and sagD as Biomarkers of Fish Pathogen *Streptococcus iniae*: An In Silico Study", Squalen Bulletin of Marine and Fisheries Postharvest and Biotechnology, 2020

Publication

1%

---

12

[worldwidescience.org](http://worldwidescience.org)

Internet Source

<1%

---

13

Rod A. Wing, Hong-Bin Zhang, Steven D. Tanksley. "Map-based cloning in crop plants. Tomato as a model system: I. Genetic and physical mapping of jointless", Molecular and General Genetics MGG, 1994

Publication

<1%

---

14

[www.zju.edu.cn](http://www.zju.edu.cn)

Internet Source

<1%

---

15

[www.sigmaaldrich.com](http://www.sigmaaldrich.com)

Internet Source

&lt;1%

16

"Proceeding of the 1st International Conference on Tropical Agriculture", Springer Science and Business Media LLC, 2017

Publication

&lt;1%

17

[hos.ufl.edu](http://hos.ufl.edu)

Internet Source

&lt;1%

18

Submitted to Florida International University

Student Paper

&lt;1%

19

[mro.massey.ac.nz](http://mro.massey.ac.nz)

Internet Source

&lt;1%

20

[mafiadoc.com](http://mafiadoc.com)

Internet Source

&lt;1%

21

Rifki Febriansah, Dewi P.P. Dyaningtyas, Sarmoko, Nunuk Aries Nurulita, Edy Meiyanto, Agung Endro Nugroho. "Hesperidin as a preventive resistance agent in MCF-7 breast cancer cells line resistance to doxorubicin", Asian Pacific Journal of Tropical Biomedicine, 2014

Publication

&lt;1%

Exclude bibliography Off