

# Comperative Study on Manuka and Indonesian Honeys to Support the Application of Plasma Jet During Proliferative Phase on Wound Healing

*by* Budi Santosa

---

**Submission date:** 14-Aug-2021 05:05PM (UTC+0700)

**Submission ID:** 1631282201

**File name:** 3.Comparative\_studi\_on\_Manuka\_clinical\_plasma\_Medicine.pdf (2.95M)

**Word count:** 6187

**Character count:** 32666



ELSEVIER

Clinical Plasma Medicine

journal homepage: [www.elsevier.com/locate/cpme](http://www.elsevier.com/locate/cpme)

Original research article

## Comparative study on Manuka and Indonesian honeys to support the application of plasma jet during proliferative phase on wound healing



Eka Sakti Wahyuningtyas<sup>a,f,g</sup>, Arya Iswara<sup>b</sup>, Yunita Sari<sup>c</sup>, Sodik Kamal<sup>a</sup>, Budi Santosa<sup>b,g</sup>, Tatsuo Ishijima<sup>d</sup>, Toshio Nakatani<sup>e</sup>, Indri Kartika Putri<sup>f</sup>, N Nasruddin<sup>b,f,g,\*</sup>

<sup>a</sup> Department of Nursing, Faculty of Health Sciences, Universitas Muhammadiyah Magelang, Indonesia

<sup>b</sup> Department of Medical Laboratory Science, Faculty of Nursing and Health Sciences, Universitas Muhammadiyah Semarang, Semarang, Indonesia

<sup>c</sup> Department of Nursing, Faculty of Health Sciences, Jenderal Soedirman University, Indonesia

<sup>d</sup> Research Center for Sustainable Energy and Technology, Kanazawa University, Kanazawa-shi, Japan

<sup>e</sup> Division of Nursing, Faculty of Health Sciences, Institute of Medical, Pharmaceutical, and Health Sciences, Kanazawa University, Kanazawa-shi, Japan

<sup>f</sup> Research Center for Experimental Wound Healing, Universitas Muhammadiyah Magelang, Indonesia

<sup>g</sup> Muhammadiyah Research Network for Plasma Medicine (M-Plasmed), Semarang, Indonesia

### ARTICLE INFO

#### Keywords:

Plasma medicine  
RONS  
Indonesian honey  
Manuka honey  
PAW  
Wound

### ABSTRACT

**Purpose:** A comparative investigation was conducted to determine the effectiveness of Manuka and Indonesian honeys to support the application of plasma jet treatment during the proliferative phase of cutaneous wound healing in 8-week-old, BALB/c male mice.

**Methods:** The effect of honey containing different concentrations to reactive oxygen and nitrogen species (RONS) produced by plasma jet in liquid medium using H<sub>2</sub>O<sub>2</sub> as the indicator was conducted using chemical-enzymatic method. Plasma jet treatment was applied perpendicularly to wounds through holes punched in multiple micro-well dressings (MMD) using direct contact. Mice were divided into 4 groups: Hydrocolloid dressing alone (Control group or C), plasma application followed by hydrocolloid dressing (PH), plasma application followed by treatment with Indonesian honey (PI), and plasma application followed by treatment with Manuka honey (PM). Two full-thickness acute wounds were created on both sides of the mouse dorsum using a disposable biopsy punch. The wounds of the control group were covered with a hydrocolloid dressing (HD), whereas wounds in the other groups were covered with a HD from days 0 to 3, treated with plasma followed by 0.1 mL of the relevant honey or HD from days 4 to 7 post-wounding, and then covered with a HD from days 8 to 14.

**Results:** On day 7 the wound area in the PI and PM groups was smaller than in the control group. On days 12, 13, and 14, however, the wound area in PI-treated mice was significantly larger than in PM mice.

**Conclusion:** Manuka honey may better support plasma jet treatment than Indonesian honey on account of its chemical characteristics.

### 1. Introduction

Theoretically, wound healing occurs over several overlapping phases, namely, inflammation, proliferation, and remodelling [1]. Sen et al. [2] reported that numerous events of wound healing, like haemostasis, inflammation, re-epithelialization, and vascularization, are subject to biological redox control. Reactive oxygen species (ROS) like hydrogen peroxide (H<sub>2</sub>O<sub>2</sub>), and reactive nitrogen species (RNS) like nitric oxide (NO), are key players in such mechanisms. These reactive species are well known oxidants that function as signal messengers.

In the clinical setting of wound care management, there are many

established biological and biophysical therapies capable of promoting wound healing, from natural products like hormones [3, 4] and honey [5], to sophisticated technologies like negative pressure wound therapy [6], hyperbaric oxygenation [7], electrical stimulation [8], ultra-violet light and ultrasound [9] and green light [10]. The drawbacks of these therapies are that, to date, there is no single one treatment capable of improving all healing phases, and that most therapies have side effects. The importance of finding new healing agents is therefore clear. For this purpose, wound therapies based on the combination of plasma medicine and honey are being developed.

Generally, plasma medicine is defined as the application of man-made

\* Corresponding author at: Department of Medical Laboratory Science, Faculty of Nursing and Health Sciences, Universitas Muhammadiyah Semarang, Jalan Kedungmundu Raya No.18, Semarang, Central Java 50273, Indonesia.

E-mail address: [nasruddin@unimus.ac.id](mailto:nasruddin@unimus.ac.id) (N. Nasruddin).

<https://doi.org/10.1016/j.cpm.2018.08.001>

Received 7 March 2018; Received in revised form 18 July 2018; Accepted 10 August 2018  
2212-8166/© 2018 Elsevier GmbH. All rights reserved.

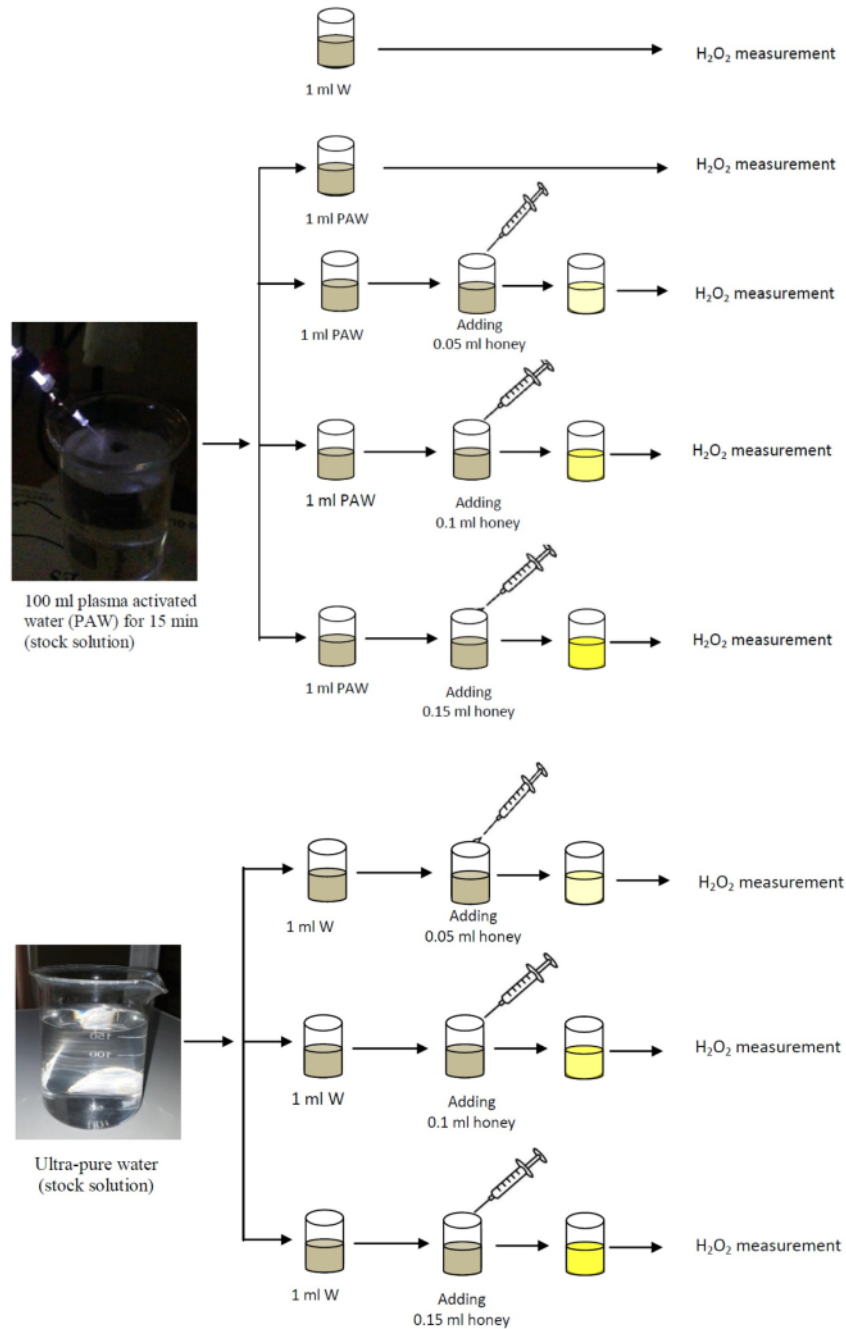


Fig. 1. Evaluation procedure of  $H_2O_2$  in the PAW dropped by honey.

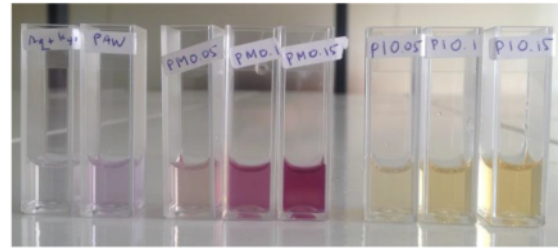
plasma for medical purposes [11, 12], for example, the killing of microorganisms on the body or teeth [13, 14], in cancer therapy [15, 16] and in wound healing [66, 18]. It is well known that the clinical value of plasma is derived from its ability to generate reactive oxygen and nitrogen species (RONS) [19] capable of influencing biological systems, with wounds being one example [2]. Roy et al. [20] reported that topical treatment with  $H_2O_2$  at micromolar concentrations is able to improve the healing of acute wounds. Conversely, at relatively high doses it can damage normal,

healthy tissue [21].

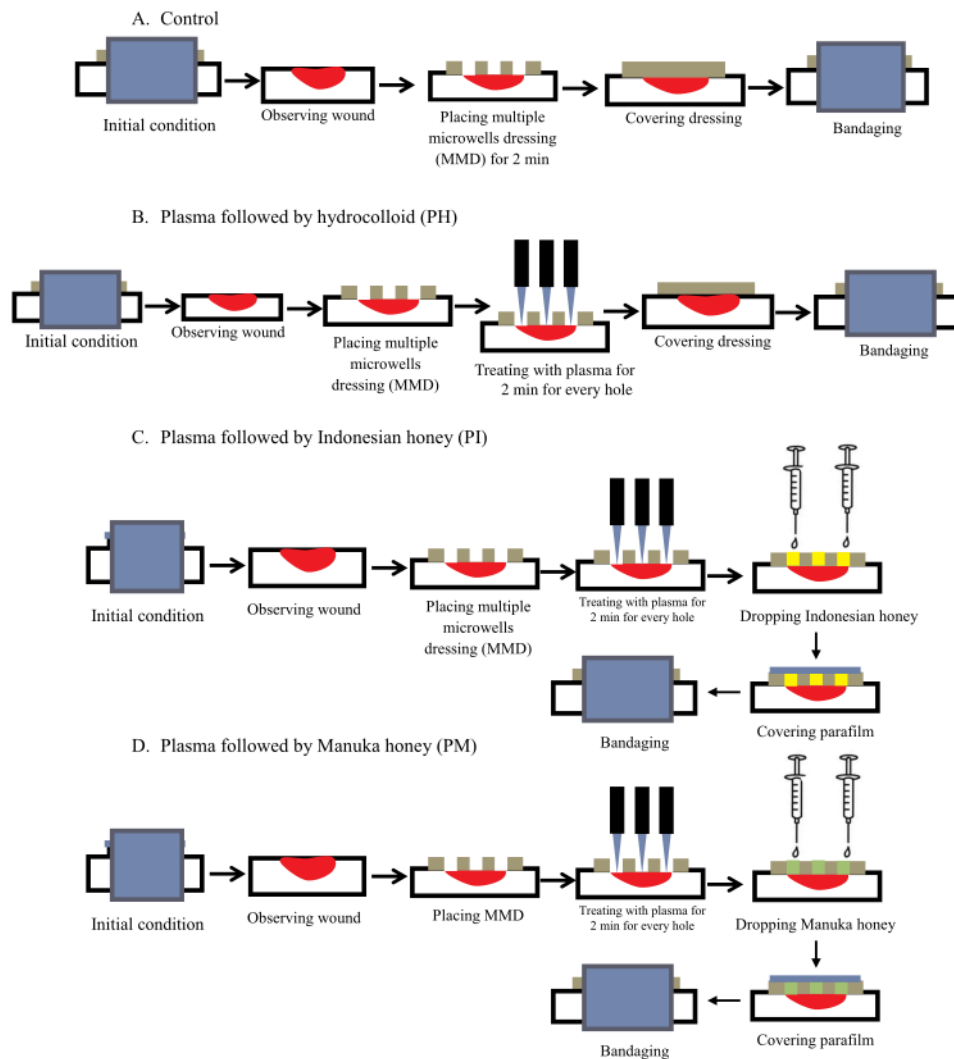
Although RONS are key players in wound healing, recent investigation has shown that the medical and biological effects of RONS depend on the environmental conditions of living cells. Weltmann and Woedtke [22] make the claim that the biological effects of plasma are rooted on two basic principles. Firstly, the biological effects of plasma are due to plasma-induced changes to the liquid zone surrounding cells. Secondly, RONS that are produced in, or transported into, liquid phases play a pivotal role in

**Table 1**  
Wounds conditions for each group during the 14 days of the experiment.

Group	Experiment days		
	0 – 3	4 – 7	8 – 14
Control	under hydrocolloid dressing	under hydrocolloid dressing	under hydrocolloid dressing
PH	under hydrocolloid dressing	in line with plasma treatment procedure as described in Fig. 2	under hydrocolloid dressing
PI	under hydrocolloid dressing	in line with plasma treatment procedure as described in Fig. 2	under hydrocolloid dressing
PM	under hydrocolloid dressing	in line with plasma treatment procedure as described in Fig. 2	under hydrocolloid dressing



**Fig. 3.** Liquid appearance 8 min after the reaction of Kyoritsu's reagent with samples W (Aq + Kyo), PAW, PAWM-0.05(PM0.05), PAWM-0.1 (PM0.1), PAWM-0.15(PM0.15), PAWI-0.05(PI0.05), PAWI-0,1(PI0.1), and PAWI-0.15(PI0.15).



**Fig. 2.** Experimental procedure from day 4 till 7.

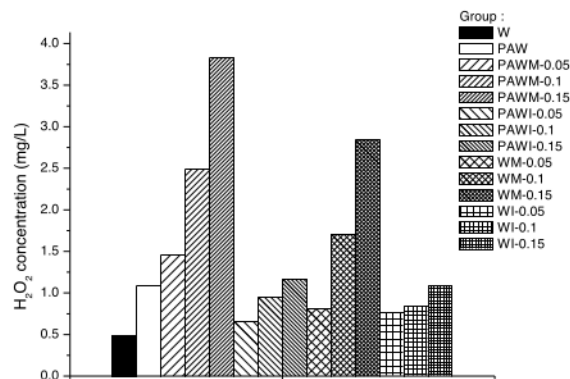


Fig. 4.  $H_2O_2$  concentration 8 min after reaction with Kyoritsu's reagent for each sample.

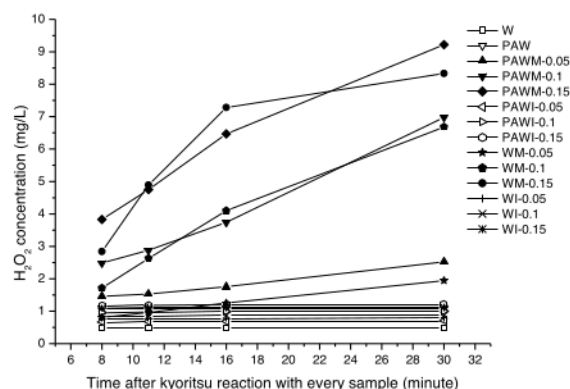


Fig. 5. Relationship between times after the reaction of Kyoritsu's reagent and  $H_2O_2$  concentration for each sample.

plasma-induced biological responses.

Topical wound management is the manipulation of wounds to restore a physiologic environment; an environment that is characteristic of an organism's healthy or normal state. Adequate moisture levels, temperature control, pH regulation, and control of bacterial burden are key factors of a physiologic wound environment [23]. Wound dressing are materials used to imitate the skin so that a physiologic local wound environment can be emulated. There are many types of dressings, some of which use honey, with its many biological activities that work to support the healing processes, as a natural dressing. It has been reported that honey's strong osmotic pressure can promote autolysis by pulling lymph fluid from surrounding tissues, thereby adding moisture to the wound [24]. Honey also plays a role as an antioxidant [44]. Using animal models mimicking clinical settings, it was reported that Indonesian honey is almost as effective for wound healing as Manuka honey and hydrocolloid dressings [26].

Plasma-activated water (PAW), or water exposed to atmospheric pressure plasma, has recently been put forward as one of the most sophisticated themes in plasma medicine [27–29]. The efficacy of a combinative treatment of plasma jets and distilled water for acute wound healing using small experimental animals has recently been reported [30]. The possibility of a combinative treatment involving plasma medicine and liquid containing natural products derived from honey was also reported, but its efficacy to support wound healing was low [31].

To improve this result, a new strategy combining plasma jet treatment and honey was explored in the current study. In our previous experiments we combined plasma jets and honey to wounds through direct contact, in

which honey applied directly to wounds was exposed to a plasma jet. In the current experiment honey solutions were dropped onto wounds through holes in a micro-well dressing following plasma jet treatment. There was no direct contact between honey and the plasma jet. Two types of honey with different origins, namely Indonesian and Manuka honeys, were used. As plasma jet treatment has been found to be more effective during the proliferative wound-healing phase [30–32], plasma treatments were only conducted during the aforementioned phase, on days 3 till 7.

55

## 2. Methods and materials

### 2.1. Cold plasma jet system

This research used an atmospheric pressure plasma jet system in which plasma is applied perpendicular to the wound. This system was developed based on Teschke et al. [33] and has been described previously [31]. It had a quartz tube with inner and outer diameters were 1.5 and 2.7 mm, respectively. Two electrodes from aluminium foil ring were applied around the quartz tube for this system. AC voltage produced by high voltage power supply (CR-N16, Koderu, Japan), with a peak-to-peak voltage of 14.65 kV and a frequency of 12.72 kHz, was applied to the upper ring electrode when argon gas at a flow rate of 2 standard litres per minute (slm) was flowed from one end of the quartz tube. The lower electrode was linked to the ground. Ultra-pure argon gas (99.999% purity) produced for clinical purposes by the Samator Company (Indonesia) was used as a carrier gas.

### 2.2. Honey solution

Two types of commercial honey, namely Indonesian honey (I) (Solo, Indonesia) and Manuka honey with Unique Manuka Factor (UMF) 5 + (M) (Auckland, New Zealand), were used in this research.

### 2.3. Multiple-holes dressing (MHD)

The placement of commercial honeys, Manuka and Indonesian honeys, on wound surfaces was supported using multiple-holes dressings (MHD). MHD is a commercial hydrocolloid dressing that was modified by making four holes (diameter ~2 mm for each hole) in it.

### 2.4. Evaluation of $H_2O_2$ in the PAW dropped by honey

The human body is composed of more than 65% water, and loss of this moisture is prevented principally by the epidermis [34]. The presence of liquid or water around cells in living tissue is a critical factor in the efficacy of plasma medicine [22]. Considering that wound tissue was rich in water, it was assumed that a "plasma activated wound" followed by treatment with honey would be analogous with "plasma activated water (PAW)" followed by treatment with honey. An experiment was conducted to evaluate the effect of honey containing different RONS concentrations produced by plasma jets in liquid medium using  $H_2O_2$  concentration as indicator. The general procedure is described in Fig. 1. There are two stock solutions, namely ultra pure water (W) and plasma-activated water (PAW). PAW is 100 ml ultra-pure water exposed to an atmospheric plasma jet for 15 min with following parameters: argon gas flow rate = 2 SLM; peak-to-peak voltage = 14.65 kV; nozzle tip-water surface distance = approximately 15 mm. Samples were classified into 14 groups: only water (W), only Plasma Activated Water (PAW), PAW followed by M at volumes of 0.05, 0.1, and 0.15 mL (PAWM-0.05, PAWM-0.1, PAWM-0.15), PAW followed by I honey at volumes of 0.05, 0.1, and 0.15 mL (PAWI-0.05, PAWI-0.1, PAWI-0.15), W followed by M at volumes of 0.05, 0.1, and 0.15 mL (WM-0.05, WM-0.1, WM-0.15), W followed by I at volumes of 0.05, 0.1, and 0.15 mL (WI-0.05, WI-0.1, WI-0.15).

$H_2O_2$  accumulation in every sample was analysed with a peroxidase enzyme method using a commercial reagent (Kyoritsu Chemical-Check Lab., Model WAK-H2O2) as reported previously [31]. The presence of  $H_2O_2$  was identified based on the change of the liquid's colour and then was confirmed using the absorbance rate change of a spectrophotometer using the absorption

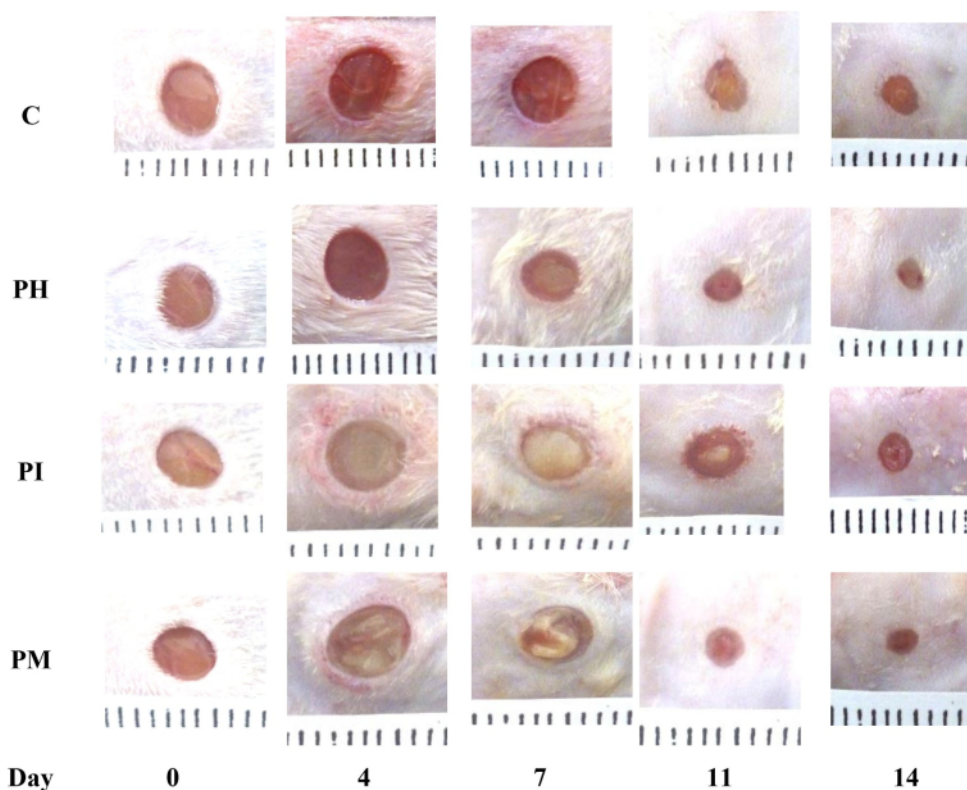


Fig. 6. Macroscopic observation of wounds on days 0, 4, 7, 11, and 14.

peak at 540 nm. To evaluate the possibility of  $H_2O_2$  accumulation change from minute to minute, the analysis was conducted 8, 10, 15, 20, 25, and 30 min after the reaction between sample and reagent was initiated.

### 2.5. Animals and investigation protocol

This investigation was conducted at the Research Center for Experimental Wound Healing, Universitas Muhammadiyah Magelang, Central Java, Indonesia. [28] experimental procedures and animal care were conducted according to the Guidelines for the Care and Use [22] Laboratory Animals of Laboratorium Penelitian dan Pengujian Terpadu/Integrated Research and Testing Laboratory (LPPT UGM), GadjahMada University, Yogyakarta, Indonesia (certificate number: 00086/04/LPPT/VII/2017). LPPT UGM is operated under the accreditation of the ISO/IEC 17025 and the National Accreditation Committee of Indonesia (Komite Akreditasi Nasional/KAN, Indonesia). Thirty-six BALB/c male mice aged 8 weeks and weighing 21.0–28.0 g purchased from LPPT UGM were used. Mice were caged individually in an air-conditioned room at  $28.0 \pm 2.0^\circ\text{C}$  with light from 09:00 to 21:00 h and under *ad libitum* feeding conditions.

### 2.6. Wound healing model and plasma treatment

Mice was completely anaesthetised by injection of ketamine-xylazine, (K) 50 mg/kg and (X) 5 mg/kg, into the peritoneal cavity [35]. A previously described technique [31] was applied to create 2 circular (4 mm in diameter) full-thickness skin wounds including the [70] nniculus on both sides of the mouse dorsum using a sterile, disposable 4 mm biopsy punch (Kai Industries Co. Ltd., Gifu, Japan). A plasma jet was applied perpendicular to the wound surface through 4 holes in the multi-hole dressing once daily for 1 min per hole over 14 days. The position of the wound surface was about 10 mm from

the nozzle tip. Contact between the plasma jet and the wound in each respective hole was observed.

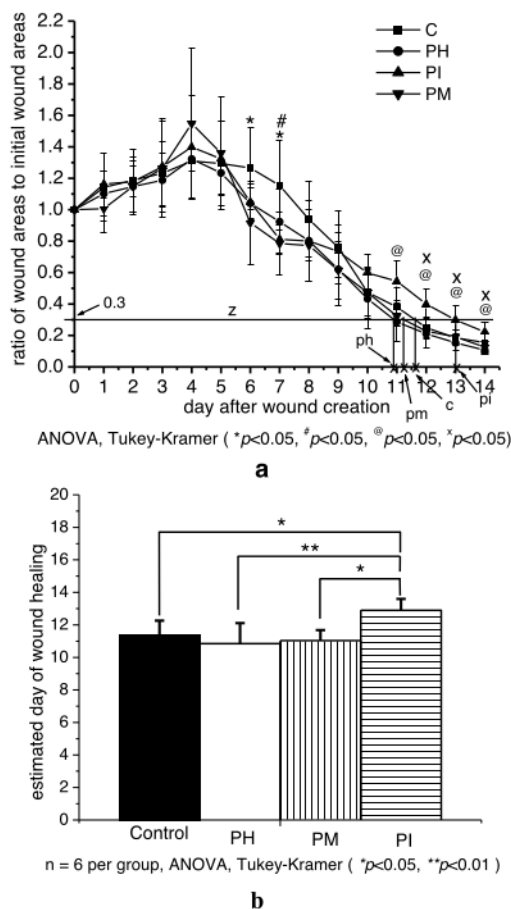
Mice were divided into 4 groups: hydrocolloid dressing alone (Control group or C), plasma followed by hydrocolloid dressing (PH), plasma followed by an Indonesian honey (PI), and plasma followed by a Manuka honey (PM). The wounds of the control group were covered with a hydrocolloid dressing (HD), whereas wounds in the other groups were covered with a HD from days 0 to 3, treated with plasma followed by 0.1 mL of the relevant type of honey or HD from days 4 to 7 post-wounding, and were covered with a HD from days 8 to 14. Wound conditions for each group from days 0 to 14 are shown in Table 1. The experimental procedure from days 3 to 7 is shown in detail in Fig. 2.

### 2.7. Macroscopic evaluation of wound

The day of wound creation was plotted as day 0, and the progress of wound healing was observed daily from days 0 to 14. Macroscopic evaluation procedures were carried out using a previously-described technique [17].

### 2.8. Estimated day of healing

Determination of the day upon which wound healing was completed was conducted based on the technique described by Nasruddin et al. [30]. Briefly, the completion of wound healing was estimated based on visual evaluation of the wounds. The ratio of the wound area on each day was plotted against the wound area on day 0 and the overall trend of this graph was evaluated. The healing day was determined from the y-axis when the trend of reduction of the wound size levelled off, as reported previously, at  $y = 0.3$  (Fig. 7a). From that point, line z was made, crossing the lines of reduction for each group. Wound



**Fig. 7.** (a) Ratio of wound areas to initial wound areas during healing. On day 7, the sizes of the wounds in PM and PI were significantly smaller than in C; however, they were almost the same size as those in PH. Conversely, on days 12–14 the wound sizes in PM and PH were significantly smaller than in PI. Note that \* shows the significance level of PM to C, while #, x, and @ show those of PI to C, PH to PI, and PM to PI, respectively. At point 0.3 on the y-axis, it was assumed that re-epithelialization covered the wound surface completely in all groups. Points ph, pm, c, and pi indicate estimated days of healing for PH, PM, C, and PI, respectively. (b) A histogram estimating number of days until healing for every group. PH, PM, Control (C), and PI were  $10.85 \pm 1.26$ ,  $11.03 \pm 0.65$ ,  $11.37 \pm 0.89$ , and  $12.90 \pm 0.70$  days, respectively.

healing days at points c, pi, pm, and ph were determined based on their points of intersection with the x-axis.

### 2.9. Tissue processing and histological analysis

The experimental animals were euthanized by injection with ketamine-xylazine, administered via IP injection on days 7, 11, or 14 post-wounding. Tissue harvesting was conducted on the wound and its surrounding skin. Tissue processing was then conducted by means of a previously described technique [32]. The sampled wound tissue was stapled onto polypropylene sheets to hinder over-contraction of the samples, and then [57] d for approximately 15 h in neutral-buffered 10% form [72] solution in 0.01 M phosphate buffer, pH 7.4. The sheets were then rinsed in 0.01 M PBS for approximately 8 h. Tissue bisection was carried out at the wound centre. Subsequently, sections were dehydrated in an alcohol series, cleaned in xylene, and embedded in paraffin to prepare serial 5  $\mu$ m sections. The sections containing the wound centre were stained with

haematoxylin-eosin (HE) for histological analysis. Re-epithelialisation percentages were calculated using a formula, as reported previously [31].

### 2.10. Statistical analysis

Data were subjected to statistical analyses using SPSS 16.0. The ratios between the average wound area to the original wound area and the number of days required for wound healing were evaluated by ANOVA followed by the Tukey–Kramer method;  $P$ -values  $< 0.05$  were considered significant.

## 3. Results

### 3.1. Evaluation of $H_2O_2$ in the PAW dropped by honey

Colour differences between Manuka and Indonesian honeys in PAW are reported in Fig. 3, with Manuka being purplish, and Indonesia yellowish. In both Manuka and Indonesia honey, the colour of the liquid was found to change with changes in its concentration. Higher concentrations of honey [18] decreased transparency. Fig. 4 shows that the  $H_2O_2$  concentration in PAW was significantly higher than in W, indicating that plasma jet treatment generated  $H_2O_2$  in W.

Fig. 4 also shows that, in both PAWM and PAWI groups, higher honey concentrations were associated with higher  $H_2O_2$  concentrations.  $H_2O_2$  concentrations in the PAWM (PAWM-0.05, PAWM-0.1, and PAWM-0.15) and WM (WM-0.1 and WM-0.15) groups was higher than in PAW. However, when equal volumes of honey were used, the  $H_2O_2$  concentration in PAWM was higher than in WM. In contrast to this, the  $H_2O_2$  concentrations in the PAWI and WI groups was almost the same as, or lower than, those found in PAW. This indicated that Manuka honey increased the amount of  $H_2O_2$  in PAW, while Indonesian honey did not.

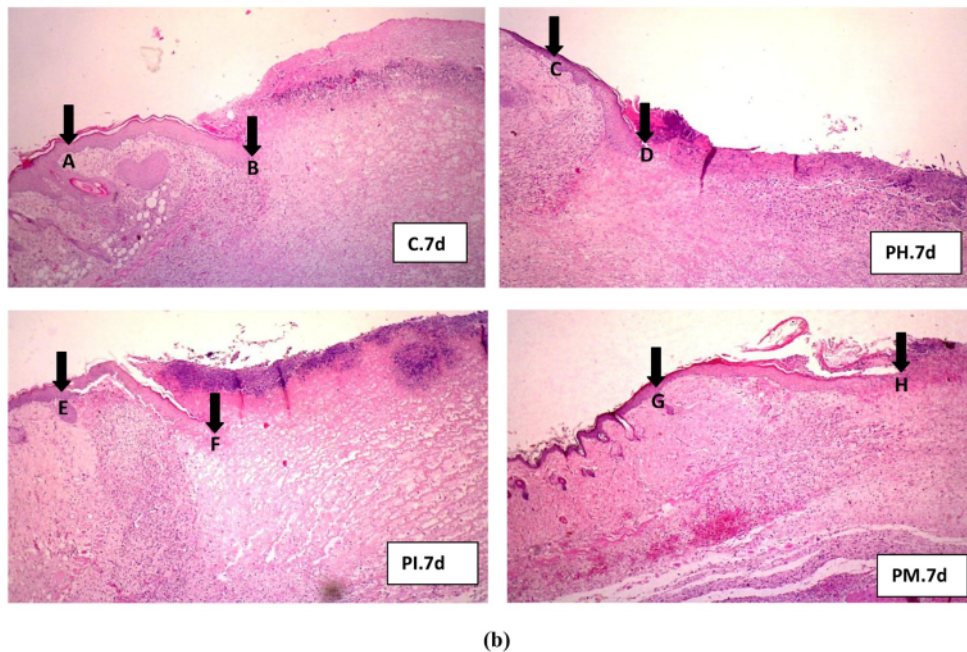
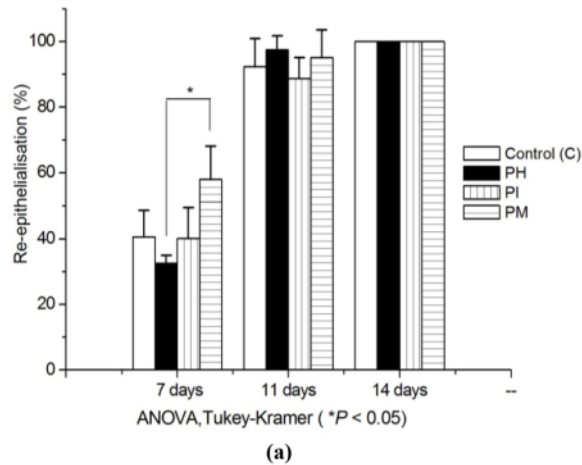
As seen in Fig. 4, over the 30 min following reaction with Kyoritsu's reagent with the liquid samples,  $H_2O_2$  concentrations in the Manuka honey groups (PAWM and WM) increased significantly, while  $H_2O_2$  concentrations in the Indonesian honey and other groups were clearly stable (Fig. 4). This indicated that the Kyoritsu chemical reagent influenced the chemical stability of Manuka honey, producing  $H_2O_2$ . The reagent, however, had no effect on the Indonesian honey groups, PAW and W.

### 3.4. Macroscopic observation

Wounds were observed in every group from days 0 to 14, as shown in Fig. 6. Generally, wound areas in all groups increased over the first four days and then gradually decreased until the end of the observation period. Wound areas in PM and PI on day 7 were smaller than those observed in C. On day 14, wound areas in PM and PH were smaller than those in C. However, those in the PM and PH were smaller than those in PI. Wounds were inspected every day and mostly found to be fresh.

### 3.5. Wound area reduction and estimated day of healing

Fig. 7 shows ratios of wound areas to initial wound areas during healing. On day 7, wound areas in PM and PI were significantly smaller than in C (PH vs C:  $P < 0.05$ ; PI vs C:  $P < 0.05$ ), but were almost the same as in PH (PH vs PM:  $P > 0.05$ ; PH vs PI:  $P > 0.05$ ). Conversely, on days 12–14, wound areas in PM and PH were significantly smaller than in PI (PM vs PI:  $P > 0.05$ ; PH vs PI:  $P > 0.05$ ). This indicated that during plasma jet treatment over the proliferative phase from day 4 until day 7 improved healing in PM and PI compared to C. After the proliferative phase, however, from days 12 until 14 healing in PI was delayed, while the healing seen in PM and PH was almost same as in C. A histogram estimating number of days until complete healing in every group (Fig. 7b) shows that PH, PM, Control (C), and PI required  $10.85 \pm 1.26$ ,  $11.03 \pm 0.65$ ,  $11.37 \pm 0.89$ , and  $12.90 \pm 0.70$  days, respectively.



**Fig. 8.** (a) Percentage of re-epithelialisation; (b) Representative histological images of new epithelial tissue on day 7: (C.7d) HE staining of the control. (P.7d) HE staining of the plasma followed by hydrocolloid treatment. (PI.7d) HE staining of the plasma followed Indonesian honey. (PM.7d) HE staining followed by Manuka honey treatment. AB, CD, ED, and GH show the outer boundaries of new epithelium at magnification  $200\times$ . Re-epithelialisation increased more rapidly in the PM tissue than in the others.

### 3.6. Histological analysis

On days 7, 11, and 14, re-epithelialisation during healing was evaluated (Fig. 8). On day 7, the re-epithelialisation percentage in PM was significantly higher than in PH ( $P < 0.05$ ). On other hand, on same day re-epithelialisation percentages for C, PH, and PI did not differ significantly. From days 7 to 11, the re-epithelialisation percentage for all groups increased dramatically. On day 11, the re-epithelialisation percentage for all groups did not differ significantly. On day 14, all the wounds in each of the groups were completely covered by new epithelium.

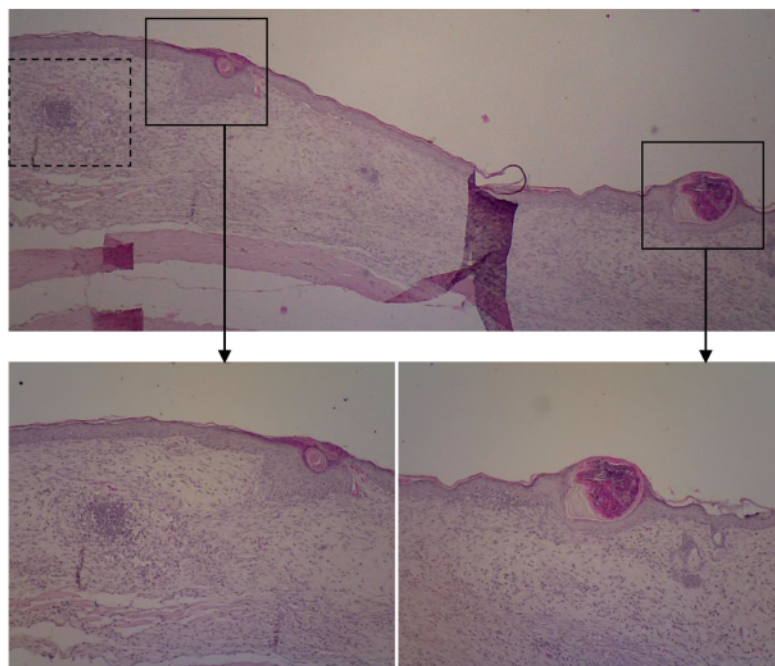
While normal matured wounds were observed in the C, PM, and PH groups on day 14, an abnormal condition (necrotic tissue) was observed in newly-formed epidermal tissue from the PH group, as shown in Fig. 9. An island of inflammatory cells, which may indicate residual inflammation, was observed.

### 4. Discussion

The hydrogen peroxide ( $H_2O_2$ ) content of honey is reported to be a critical factor in its activity as a therapeutic agent.  $H_2O_2$  is naturally fabricated through the glucose oxidase (GOX)-mediated conversion of glucose under aerobic conditions in diluted honey. It has been reported that the  $H_2O_2$  concentration (or accumulation level) is highest when honey is diluted by 30–50% [36]. These ( $H_2O_2$ ) levels, however, may vary from honey to honey [37].

Firstly, this investigation showed that while, in the reaction between water (W) or plasma-activated water (PAW), Manuka honey and Kyoritsu reagent cause significant  $H_2O_2$  accumulation over time, Indonesian honey and Kyoritsu reagent did not cause  $H_2O_2$  accumulation. This indicated that the former reaction may affect the factors influencing  $H_2O_2$  accumulation,





**Fig. 9.** Histological condition of wound samples in PH group on day 14. Insets with solid borders show the abnormal condition of new epidermal tissue. The dashed-lined insert shows an island of inflammatory cells possibly indicating that the inflammation remains.

as stated by Majtan et al. [38]. Majtan et al. highlighted factors that influence  $H_2O_2$  accumulation in honey, namely (1)  $H_2O_2$  degradation by catalase enzyme originating from pollen, (2) low concentrations of GOX in honey, (3) inactivation of GOX by heating. Further investigations into the effects of the former reaction on the catalase enzyme, GOX rate, and GOX inactivation in Manuka honey should be conducted.

Secondly, our investigation showed that, following reaction with Kyoritsu reagent for 8 min, the levels of  $H_2O_2$  accumulation in PAWM groups was higher than in WM groups, while levels in PAWI groups did not differ from those in WIs, as shown in Fig. 4. It is indicated that, compared with water, plasma-activated water may have a greater ability to accelerate  $H_2O_2$  accumulation in Manuka honey. Conversely, the abilities of plasma-activated water and unactivated water to influence  $H_2O_2$  accumulation in Indonesian honey may be equal.

It has been reported that variability in the outcomes of plasma medicine treatments may be correlated with differences between applied plasma parameters and treatment modes [31]. To the best of our knowledge, this is the first report to investigate the efficacy of limiting the application of plasma jet treatment to the proliferative phase of skin wound healing.

A previous study reported the efficacy of contact plasma jet application to wounds [39], while others confirmed the efficacy of non-contact plasma jet procedures [30, 32]. Direct contact plasma jet application to normal skin of mice, however, has detrimental effects [30]. In this investigation, two types of honey, namely Indonesian honey and Manuka honey, were evaluated to support direct contact plasma application for the treatment of acute wounds. The results showed that during the proliferative phase both Indonesian and Manuka honey (PI and PM) have similar positive supportive effects on plasma jet improvement of wound healing. During the remodelling phase or after the termination of the plasma jet treatment, however, wound healing in the Manuka-supported group (PM) was significantly faster than in the Indonesian honey-supported group (PI). This research also showed that re-epithelialisation in PM, but not in PI, was significantly higher on day 7 than in PH. It can be concluded that Manuka

honey was better than Indonesian honey at supporting plasma jet application as a topical wound therapy. Additionally, we suspect that the superiority of Manuka may be linked to its intrinsic  $H_2O_2$  characteristics, as discussed previously.

This experiment also revealed the presence of necrotic tissue and inflammatory cells on new epidermis and dermis, respectively, on day 14 in the PH group. It is hypothesized that the appearance of such cells may be consequent to the combinative application of the plasma jet and the multiple holes dressing, followed by the hydrocolloid dressing alone. During treatment, a plasma jet may dry or necrotise the wound surface, and hydrocolloid dressings by themselves may have a lower ability to minimize such an effect than hydrocolloid dressings containing honey. In wound healing studies, it is well known that desiccative treatments impede healing [40]. The possible drying effect of plasma jets on wounds has been reported previously [32]. Our study had three main findings. Firstly, daily plasma jet treatments from days 4 till 7 had an impact on wounds which lasted until day 14. Secondly, the dimensions of abnormal tissue may be representative of the wound area exposed to plasma through holes in the dressing. Finally, the utilization of honey, whether Manuka and Indonesian, as applied in this study, may be better able to prevent the formation of abnormal tissue in wounds than hydrocolloid dressings alone.

#### Acknowledgements

This research was partly supported by the research grant Program Penelitian Revitalisasi Visi Institusi 2017, Universitas Muhammadiyah Magelang, Indonesia (No.006/Kontrak/PRVI/2017). Authors would also like to acknowledge the help of Drs. Tafsir, M.Ag., Chairman of the Regional Board of Muhammadiyah Central Java, Indonesia, for his financial support.

6

#### Conflict of interest

We wish to draw the attention of the Editor to the following facts

which may be considered as potential conflicts of interest and to significant financial contributions to this work. We wish to confirm that there are no known conflicts of interest associated with this publication and there has been no significant financial support for this work that could have influenced its outcome.

We confirm that we have given due consideration to the protection of intellectual property associated with this work and that there are no impediments to publication, including the timing of publication, with respect to intellectual property. In so doing we confirm that we have followed the regulations of our institutions concerning intellectual property.

### Ethical Statement

We further confirm that any aspect of the work covered in this manuscript that has involved either experimental animals or human patients has been conducted with the ethical approval of all relevant bodies and that such approvals are acknowledged within the manuscript.

In detail, the experimental procedures and animal care were conducted according to the Guidelines for the Care and Use of Laboratory Animals of Laboratorium Penelitian dan Pengujian Terpadu/Integrated Research and Testing Laboratory (LPPT UGM), Gadjah Mada University, Yogyakarta, Indonesia (certificate number : 00086/04/LPPT/VII/2017). LPPT UGM is operated under the accreditation of the ISO/IEC 17025 and the National Accreditation Committee of Indonesia (Komite Akreditasi Nasional/KAN, Indonesia).

### Funding

This research was partly supported by the research grant Program Penelitian Revitalisasi Visi Institusi 2017, Universitas Muhammadiyah Magelang, Indonesia (No.006/Kontrak/PRVI/2017). Authors would also like to acknowledge the help of Drs. Tafsir, M.Ag., Chairman of the Regional Board of Muhammadiyah Central Java, Indonesia, for his financial support.

### Author contributions

We confirm that the manuscript has been read and approved by all named authors and that there are no other persons who satisfied the criteria for authorship but are not listed. We further confirm that the order of authors listed in the manuscript has been approved by all of us.

### Supplementary materials

Supplementary material associated with this article can be found, in the online version, at doi:10.1016/j.cpm.2018.08.001.

### References

- [1] T.J. Martin, P. Martin, Wound repair at a glance, *J. Cell Sci.* 122 (2009) 3209–3213.
- [2] C.K. Sen, S. Roy, Redox signals in wound healing, *Biochimica et Biophysica Acta* 1780 (2008) 1348–1361.
- [3] K. Mukai, Y. Nakajima, T. Urai, E. Komatsu, Nasruddin, et al., 17 $\beta$ -estradiol administration promotes delayed cutaneous wound healing in 40-week ovariectomized female mice, *Int. Wound J.* 13 (2014) 636–644.
- [4] K. Mukai, E. Komatsu, Y. Nakajima, T. Urai, Nasruddin, et al., The effect of 17 $\beta$ -estradiol on cutaneous wound healing in protein-malnourished ovariectomized female mouse model, *PLoS ONE* 9 (12) (2014) e115564, <https://doi.org/10.1371/journal.pone.0115564>.
- [5] Y. Nakajima, K. Mukai, Nasruddin, E. Komatsu, T. Uchi, Y. Kitayama, J. Sugama, T. Nakatani, Evaluation of the effects of honey on acute-phase deep burn wounds, *Evid.-Based Complement. Altern. Med.* 2013 (2013), <http://dx.doi.org/10.1155/2013/784959>.
- [6] D.S. Netch, Negative pressure wound therapy, in: Ruth A. Bryant, P.N. Denise (Eds.), *Acute & Chronic Wounds: Current Management Concept*, 4th edition, Elsevier, Missouri: Mosby, 2011, pp. 337–352.
- [7] C. Brossard, Hyperbaric oxygenation, in: Ruth A. Bryant, P.N. Denise (Eds.), *Acute & Chronic Wounds: Current Management Concept*, 4th edition, Elsevier, Missouri: Mosby, 2011, pp. 245–352.
- [8] R.A. Frantz, Electrical stimulation, in: Ruth A. Bryant, P.N. Denise (Eds.), *Acute & Chronic Wounds: Current Management Concept*, 4th edition, Elsevier, Missouri: Mosby, 2011, pp. 353–359.
- [9] R. Cordrey, Ultraviolet light and ultrasound, in: Ruth A. Bryant, P.N. Denise (Eds.), *Acute & Chronic Wounds: Current Management Concept*, 4th edition, Elsevier, Missouri: Mosby, 2011, pp. 360–363.
- [10] T. Fushimi, S. Inui, T. Nakajima, M. Ogasawara, K. Hosokawa, S. Itami, Green light emitting diodes accelerate wound healing: characterization of the effect and its molecular basis in vitro and in vivo, *Wound Repair Regen.* 20 (2012) 226–235.
- [11] G. Fridman, A. Friedman, A. Gutsol, A.B. Shekhter, V.N. Vasilets, A. Fridman, Applied plasma medicine, *Plasma Process. Polym.* 5 (2008) 503–533.
- [12] R. Laroussi, Low-temperature plasmas for medicine? *IEEE Trans. Plasma Sci.* 37 (6) (2009) 714–725.
- [13] H. Yamazaki, T. Ohshima, Y. Tsubota, H. Yamaguchi, J.A. Jayawardena, Y. Nishimura, Microbicidal activities of low frequency atmospheric pressure plasma jets on oral pathogens, *Dent. Mater.* 26 (2011) 384–391.
- [14] T. Usui, T. Ohshima, H. Yamazaki, Plasma sterilization of caries-infected dentin model with reduced-pH method, *Jpn. J. Conserv. Dent.* 58 (2015) 101–8.
- [15] M. Keidar, R. Walk, A. Shashurin, P. Srinivasan, A. Sandler, S. Dasgupta, R. Ravi, R. Guerrero-Preston, B. Trink, Cold plasma selectivity and the possibility of a paradigm shift in cancer therapy, *Br. J. Cancer* 105 (2011) 1295–1301.
- [16] S. Seki, K. Nakamura, M. Hayashi, H. Tanaka, H. Kondo, H. Kaiyama, H. Kano, F. Kikkawa, M. Hori, Selective killing of ovarian cancer cells through induction of apoptosis by non-equilibrium atmospheric pressure plasma, *Appl. Phys. Lett.* 100 (2012) 113701.
- [17] H. Zimmmermann, F. Zeman, W. Bunk, G. Isbary, M. Landthaler, R. Rastbach, R. Monetti, G. Morfill, T. Shimizu, J. Steinbauer, W. Stolz, S. Karer, Randomized placebo-controlled human pilot study of cold atmospheric argon plasma on skin donor sites, *Wound Repair Regen.* 21 (2013) 800–807.
- [18] B. Haertel, T. Voedtke, K.-D. Weltmann, U. Lindequist, Non-thermal atmospheric pressure plasma possible application in wound healing, *Biomol. Ther.* 22 (6) (2014) 477–490.
- [19] X. Lu, G.V. Naidis, M. Laroussi, et al., Reactive species in non-equilibrium atmospheric pressure plasmas: generation, transport, and biological effects, *Phys. Rep.* 631 (2016) 1–84.
- [20] S. Hunt, K. Khanna, K. Nallu, T.K. Hunt, C.K. Sen, Dermal wound healing is subject to redox control, *Mol. Ther.* 13 (2006) 211–220.
- [21] J. Franemark, R. Ekholm, B. Albrektsson, J. Lindstrom, G. Lundborg, J. Lundskog, Bone injury caused by wound disinfectants, *J. Bone Joint Surg. Am.* 49 (1967) 48–62.
- [22] K.-D. Weltmann, Th. Woedtke, Plasma medicine—current state of research and medical application, *Plasma Phys. Control Fusion* 59 (2017) 014031–014042.
- [23] 2011, B.S. Rolstad, R.A. Bryant, P. Nix, Topical management, in: Ruth A. Bryant, P.N. Denise (Eds.), *Acute & Chronic Wounds: Current Management Concept*, 4th edition, Elsevier, Missouri: Mosby, 2011, pp. 289–306 2011.
- [24] B. Pieper, Honey-based dressings and wound care, *J. Wound Ostomy Continence Nurs.* 36 (2009) 589.
- [25] G. Baretta, M. Orioli, R.M. Facino, Antioxidant and radical scavenging activity of honey on endothelial cell cultures (EA.hy926), *Planta Med.* 73 (11) (2007) 1182–1189.
- [26] Haryanto, T. Urai, K. Mukai, Suriadi, J. Sugama, T. Nakatani, Effectiveness of Indonesian honey on the acceleration of cutaneous wound healing: an experimental study in mice, *Wounds* 24 (2013) 110–119.
- [27] H. Enomoto, T. Voedtke, Research on plasma medicine-relevant plasma-liquid interactions: what happened in the past five years? *Clin. Plasma Med.* 3 (2) (2015) 42–52.
- [28] S. Ikawa, A. Tani, Y. Nakashima, K. Kito, Physicochemical properties of bactericidal plasma-treated water, *J. Phys. D: Appl. Phys.* 49 (2016) 425401–425410.
- [29] M. Bruggeman, M.J. Kushner, B.R. Locke, et al., Plasma-liquid interactions: a review and roadmap, *Plasma Sources Sci. Technol.* 25 (2016) 05300259pp.
- [30] Nasruddin, Y. Nakajima, K. Mukai, E. Komatsu, HSE Rahayu, M. Nur, T. Ishijima, H. Enomoto, Y. Uesugi, J. Sugama, T. Nakatani, A simple technique to improve contractile effect of cold plasma jet on acute phase wound by dropping water, *Plasma Processes Polym.* 12 (2015) 1128–1131.
- [31] Nasruddin, I.K. Putri, S. Kamal, HSE. Rahayu, et al., Evaluation of the effectiveness of combinative treatment of cold plasma jet, Indonesian honey, and micro-well dressing to accelerate wound healing, *Clin. Plasma Med.* (5–6) (2017) 14–25.
- [32] Nasruddin, Y. Nakajima, K. Mukai, HSE. Rahayu, M. Nur, T. Ishijima, H. Enomoto, Y. Uesugi, J. Sugama, T. Nakatani, Cold plasma on full-thickness cutaneous wound accelerates healing through promoting inflammation, re-epithelialization and wound contraction, *Clin. Plasma Med.* 2 (2014) 28–35.
- [33] M. Teschke, J. Kedzierski, E. Finantu-Dinu, D. Korzec, J. Engemann, High-speed photographs of a dielectric barrier atmospheric pressure plasma jet, *IEEE Trans. Plasma Sci.* 33 (2005) 310–311.
- [34] D. Spruitt, The water barrier and its repair, in: H. Maebashi, D. Rovee (Eds.), *Dermal Wound Healing*, Yearbook Medical, Chicago, 1972.
- [35] J. Carpenter, *Exotic Animal Formulary*, 4th edition, Elsevier, St. Louis, 2013.
- [36] L.M. Bang, C. Banting, P.C. Molan, The effects of dilution rate on hydrogen peroxide production in honey and its implications for wound healing, *J. Altern. Complement. Med.* 9 (2003) 267–273.
- [37] K. Golezinski, Effect of hydrogen peroxide on antibacterial activities of Canadian honey, *Can. J. Microbiol.* 52 (2006) 1228–1237.
- [38] J. Majtan, J. Bohova, E. Prochazka, J. Klaudivny, Methylglyoxal may affect hydrogen peroxide accumulation in manuka honey through the inhibition of glucose oxidase, *J. Med. Food* 17 (2) (2014) 290–293.
- [39] A.V. Nastuta, I. Topala, C. Grigoras, V. Pohoata, G. Popa, Stimulation of wound healing by helium atmospheric pressure plasma treatment, *J. Phys. D: Appl. Phys.* 44 (2011) 105204.
- [40] Winter, Formation of the scab and the rate of epithelialization of superficial wounds in the skin of the young domestic pig, *Nature* 193 (1962) 293–294.

# Comperative Study on Manuka and Indonesian Honeys to Support the Application of Plasma Jet During Proliferative Phase on Wound Healing

---

## ORIGINALITY REPORT

---

**20%**  
SIMILARITY INDEX

**13%**  
INTERNET SOURCES

**15%**  
PUBLICATIONS

**8%**  
STUDENT PAPERS

---

## PRIMARY SOURCES

---

**1** Gupta, Asheesh, Pinar Avci, Magesh Sadasivam, Rakkiyappan Chandran, Nivaldo Parizotto, Daniela Vecchio, Wanessa C.M.A. de Melo, Tianhong Dai, Long Y. Chiang, and Michael R. Hamblin. "Shining light on nanotechnology to help repair and regeneration", *Biotechnology Advances*, 2013. **1%**  
Publication

---

**2** Adachi, Tetsuo, Hiromasa Tanaka, Saho Nonomura, Hirokazu Hara, Shin-ichi Kondo, and Masaru Hori. "Plasma-activated medium induces A549 cell injury via a spiral apoptotic cascade involving the mitochondrial-nuclear network", *Free Radical Biology and Medicine*, 2015. **1%**  
Publication

---

**3** Submitted to Ajou University Graduate School **1%**  
Student Paper

---

4

Mario Brufani, Francesca Ceccacci, Luigi Filocamo, Barbara Garofalo et al. "Novel Locally Active Estrogens Accelerate Cutaneous Wound Healing. A Preliminary Study", Molecular Pharmaceutics, 2009

Publication

1 %

5

Submitted to Royal Agricultural College

Student Paper

1 %

6

Tina Koop, Angelika Dienel, Marcus Heldmann, Thomas F. Münte. " Effects of a extract on mental resource allocation and attention: An event - related potential dual task study ", Phytotherapy Research, 2020

Publication

1 %

7

Ikeda, Yoshihisa, Hideki Motomura, Yugo Kido, Susumu Satoh, and Masafumi Jinno. "Effects of molecular size and chemical factor on plasma gene transfection", Japanese Journal of Applied Physics, 2016.

Publication

1 %

8

Majtan, J.. "Methylglyoxal-induced modifications of significant honeybee proteinous components in manuka honey: Possible therapeutic implications", Fitoterapia, 201206

Publication

1 %

9

158.195.31.66

Internet Source

<1 %

10

de.slideshare.net

Internet Source

<1 %

11

Renni Yuniati, Prasetyowati Subchan, Wibi Riawan, Matthew Brian Khrisna, Maryam Restiwijaya, Niken Safitri Dyan, Muhammad Nur. "Topical ozonated virgin coconut oil improves wound healing and increases HSP90 $\alpha$ , VEGF-A, EGF, bFGF and CD34 in diabetic ulcer mouse model of wound healing", F1000Research, 2020

Publication

<1 %

12

Schafer, M.. "Oxidative stress in normal and impaired wound repair", Pharmacological Research, 200808

Publication

<1 %

13

Sk $\tilde{A}$ rkowska-Telichowska, Katarzyna, Magdalena Czemplik, Anna Kulma, and Jan Szopa. "The local treatment and available dressings designed for chronic wounds", Journal of the American Academy of Dermatology, 2011.

Publication

<1 %

14

Hajizadeh Maleki, Behzad, Bakhtyar Tartibian, Frank C. Mooren, Karsten Krüger, Leah Z. FitzGerald, and Mohammad Chehrazi. "A

<1 %

randomized controlled trial examining the effects of 16 weeks of moderate-to-intensive cycling and honey supplementation on lymphocyte oxidative DNA damage and cytokine changes in male road cyclists", *Cytokine*, 2016.

Publication

15

[repository.unhas.ac.id](https://repository.unhas.ac.id)

Internet Source

<1 %

16

Submitted to Cardiff University

Student Paper

<1 %

17

Konstantin Georgiev Kostov, Aline Chiodi Borges, Cristiane Yumi Koga-Ito, Thalita Mayumi Castaldelli Nishime et al. "Inactivation of *Candida albicans* by Cold Atmospheric Pressure Plasma Jet", *IEEE Transactions on Plasma Science*, 2015

Publication

<1 %

18

Sing Wei Ng, Evanthia Tsoukou, Sonal Chapple, Daniela Boehm, Paula Bourke. "Plasma Treatment of Liquids", Elsevier BV, 2021

Publication

<1 %

19

[web.stanford.edu](https://web.stanford.edu)

Internet Source

<1 %

20

G. Isbary, T. Shimizu, J.L. Zimmermann, J. Heinlin, S. Al-Zaabi, M. Rechfeld, G.E. Morfill, S. Karrer, W. Stolz. "Randomized placebo-

<1 %

controlled clinical trial showed cold atmospheric argon plasma relieved acute pain and accelerated healing in herpes zoster", *Clinical Plasma Medicine*, 2014

Publication

21

Submitted to Universiteit van Amsterdam

Student Paper

<1 %

22

[link.lib.umanitoba.ca](http://link.lib.umanitoba.ca)

Internet Source

<1 %

23

[www.exeley.com](http://www.exeley.com)

Internet Source

<1 %

24

[www.terraplasma-medical.com](http://www.terraplasma-medical.com)

Internet Source

<1 %

25

A.M. Severyns, A. Lejeune, G. Rocoux, G. Lejeune. "Non-toxic antiseptic irrigation with chlorhexidine in experimental revascularization in the rat", *Journal of Hospital Infection*, 1991

Publication

<1 %

26

David Graves. "Mechanisms of Plasma Medicine: Coupling Plasma Physics, Biochemistry and Biology", *IEEE Transactions on Radiation and Plasma Medical Sciences*, 2017

Publication

<1 %

27

Tan, F.. "Cellular and transcriptomic analysis of human mesenchymal stem cell response to

<1 %

plasma-activated hydroxyapatite coating",  
Acta Biomaterialia, 201204

Publication

28

[molmed.biomedcentral.com](http://molmed.biomedcentral.com)

Internet Source

<1 %

29

David B. Graves, Lars B. Bakken, Morten B. Jensen, Rune Ingels. "Plasma Activated Organic Fertilizer", Plasma Chemistry and Plasma Processing, 2018

Publication

<1 %

30

James Austin Stewart, Owen Lane McGrane, Ian S. Wedmore. "Wound Care in the Wilderness: Is There Evidence for Honey?", Wilderness & Environmental Medicine, 2014

Publication

<1 %

31

[res.mdpi.com](http://res.mdpi.com)

Internet Source

<1 %

32

Swayne, D.. "Assessment of the interaction between the Canadian Regional Climate Model and lake thermal-hydrodynamic models", Environmental Modelling and Software, 200512

Publication

<1 %

33

[plexr.es](http://plexr.es)

Internet Source

<1 %

34

[repository.urecol.org](http://repository.urecol.org)

Internet Source

<1 %



35

[www.inabj.org](http://www.inabj.org)

Internet Source

&lt;1 %

36

Wilma Van Boxem, Jonas Van der Paal, Yury Gorbanev, Steven Vanuytsel, Evelien Smits, Sylvia Dewilde, Annemie Bogaerts. "Anti-cancer capacity of plasma-treated PBS: effect of chemical composition on cancer cell cytotoxicity", Scientific Reports, 2017

Publication

&lt;1 %

37

Yeu-Tsu N.(Margaret) Lee. "Clinical and laboratory findings of carcinoma of the pancreas and periampullary structures", Journal of Surgical Oncology, 01/1984

Publication

&lt;1 %

38

[hqlo.biomedcentral.com](http://hqlo.biomedcentral.com)

Internet Source

&lt;1 %

39

[researchonline.ljmu.ac.uk](http://researchonline.ljmu.ac.uk)

Internet Source

&lt;1 %

40

Carole Bauer. "Pressure Ulcer Update for Primary Care", The Journal for Nurse Practitioners, 2012

Publication

&lt;1 %

41

Submitted to Drexel University

Student Paper

&lt;1 %

42

[aapm.onlinelibrary.wiley.com](http://aapm.onlinelibrary.wiley.com)

Internet Source

&lt;1 %

- 43 "Abstracts: Vascular Biology, XIIth International Vascular Biology Meeting, 12-16 May, 2002, Karuizawa, Japan", Endothelium, 2009  
Publication <1 %
- 
- 44 Submitted to Pennsylvania State System of Higher Education  
Student Paper <1 %
- 
- 45 Marcela Bucekova, Valeria Juricova, Enrique Monton, Simona Martinotti, Elia Ranzato, Juraj Majtan. "Microwave processing of honey negatively affects honey antibacterial activity by inactivation of bee-derived glucose oxidase and defensin-1", Food Chemistry, 2018  
Publication <1 %
- 
- 46 Submitted to Australian Catholic University  
Student Paper <1 %
- 
- 47 Hongcheng Zhu, Limin Guo, Minglei Li, Yongrong Jiang, Hua Li. "Comparison of spatial distribution of active substances and sterilization range generated by array of printed-circuit-board plasma jets", Vacuum, 2021  
Publication <1 %
- 
- 48 Suzuki, Nobuhiro, and Ron Mittler. "Reactive oxygen species-dependent wound responses <1 %

in animals and plants", Free Radical Biology and Medicine, 2012.

Publication

49

[repository.up.ac.za](https://repository.up.ac.za)

Internet Source

<1 %

50

Mohammad Heiat, Reza Ranjbar, Ali Mohammad Latifi, Mohammad Javad Rasaei. "Selection of a high-affinity and in vivo bioactive ssDNA aptamer against angiotensin II peptide", Peptides, 2016

Publication

<1 %

51

Srivastava, Nimisha, and Chuji Wang. "Determination of OH Radicals in an Atmospheric Pressure Helium Microwave Plasma Jet", IEEE Transactions on Plasma Science, 2011.

Publication

<1 %

52

[eprints.qut.edu.au](https://eprints.qut.edu.au)

Internet Source

<1 %

53

[mrs.org](https://mrs.org)

Internet Source

<1 %

54

[www.jstage.jst.go.jp](http://www.jstage.jst.go.jp)

Internet Source

<1 %

55

Yanjie Yang, Dehui Xu, Ning Ning, Yujing Xu. "Analysis of Metabolite Profiling in Human Endothelial Cells after Plasma Jet Treatment", BioMed Research International, 2019

<1 %

56

[repository.unsoed.ac.id](http://repository.unsoed.ac.id)

Internet Source

<1 %

57

[www.oak.go.kr](http://www.oak.go.kr)

Internet Source

<1 %

58

Alireza Rafiei, Farshad Sohbatzadeh, Seyedehniaz Hadavi, Sander Bekeschus, Mina Alimohammadi, Reza Valadan. "Inhibition of murine melanoma tumor growth in vitro and in vivo using an argon-based plasma jet", *Clinical Plasma Medicine*, 2020

Publication

<1 %

59

Sander Bekeschus, Juliane Moritz, Anke Schmidt, Kristian Wende. "Redox regulation of leukocyte-derived microparticle release and protein content in response to cold physical plasma-derived oxidants", *Clinical Plasma Medicine*, 2017

Publication

<1 %

60

[doi.org](http://doi.org)

Internet Source

<1 %

61

[rssdi.in](http://rssdi.in)

Internet Source

<1 %

62

AS Tsang, AJ Dart, A Sole-Guitart, CM Dart, NR Perkins, LB Jeffcott. "Comparison of the effects of topical application of UMF20 and UMF5 manuka honey with a generic

<1 %

multifloral honey on wound healing variables in an uncontaminated surgical equine distal limb wound model", Australian Veterinary Journal, 2017

Publication

---

63

Anthony Armson, Bruno P. Meloni, James A. Reynoldson, R.C.Andrew Thompson. " Assessment of drugs against using a simple in vitro screening method ", FEMS Microbiology Letters, 1999

Publication

---

<1 %

64

ChangMing Du, Chao Shang, Ting Wang, ZiMing Li, Xin Yang, HaiTian Chen, Ya Liu, Kui Wang. "A Portable Plasma Sterilizer", Plasma Chemistry and Plasma Processing, 2016

Publication

---

<1 %

65

Didik Sumanto, Sayono Sayono, Puji Lestari Mudawamah. "Enterobius vermicularis larvae in urine sample of female student: The first case report in Indonesia", Journal of Microbiology & Experimentation, 2021

Publication

---

<1 %

66

[dokumen.pub](http://dokumen.pub)

Internet Source

---

<1 %

67

[tuprints.ulb.tu-darmstadt.de](http://tuprints.ulb.tu-darmstadt.de)

Internet Source

---

<1 %

68

[www.aimspress.com](http://www.aimspress.com)

Internet Source

<1 %

69

[www.bioflux.com.ro](http://www.bioflux.com.ro)

Internet Source

<1 %

70

[www.embopress.org](http://www.embopress.org)

Internet Source

<1 %

71

[www.unityhealth.com](http://www.unityhealth.com)

Internet Source

<1 %

72

[dx.doi.org](http://dx.doi.org)

Internet Source

<1 %

Exclude quotes Off

Exclude matches Off

Exclude bibliography Off