

# Human Plasmodium Like in Domestic-goat Blood in Malaria Endemic Areas in Purworejo Indonesia

*by* Sayono Sayono

---

**Submission date:** 15-Mar-2022 09:47AM (UTC+0700)

**Submission ID:** 1784550795

**File name:** 794-Article\_Text-4769-1-10-20220106.pdf (464.79K)

**Word count:** 2982

**Character count:** 16593



Short Article

# Human-Plasmodium Like in Domestic-goat Blood in Malaria Endemic Areas in Purworejo Indonesia

Didik Sumanto<sup>1,2</sup>, Suharyo Hadisaputro<sup>1</sup>, M Sakundarno Adi<sup>3</sup>, Siti Susanti<sup>4</sup>, Sayono<sup>2</sup>

<sup>1</sup>Faculty of Medicine, Universitas Diponegoro Semarang, Indonesia.

<sup>2</sup>Faculty of Public Health, Universitas Muhammadiyah Semarang, Indonesia.

<sup>3</sup>Magister of Epidemiology, Postgraduated Universitas Diponegoro Semarang, Indonesia.

<sup>4</sup>Faculty of Animal and Agriculture Science, Universitas Diponegoro Semarang, Indonesia.

DOI: <https://doi.org/10.24321/0019.5138.202185>

## I N F O

### Corresponding Author:

Didik Sumanto, Faculty of Medicine, Universitas Diponegoro Semarang, Indonesia and Faculty of Public Health, Universitas Muhammadiyah Semarang, Indonesia.

### E-mail Id:

didik.24272@gmail.com

### Orcid Id:

<https://orcid.org/0000-0003-4714-4901>

### How to cite this article:

Sumanto D, Hadisaputro S, Adi MS, Susanti S, Sayono. Human-Plasmodium Like in Domestic-goat Blood in Malaria Endemic Areas in Purworejo Indonesia. J Commun Dis. 2021;53(4):148-152.

Date of Submission: 2021-10-29

Date of Acceptance: 2021-12-24

## A B S T R A C T

**Background:** Etawa crossbreed goats are cultivated livestock by Jatirejo Kaligesing Purworejo villagers. This village is the area with the highest malaria incidence in the Province of Central Java in 2017. The Annual Parasitic Incidence (API) is 0.32%. Verified malaria vectors are *Anopheles aconitus* and *Anopheles maculatus*. Studies show that vectors prefer goat blood over humans. The research aims to trace the presence of human-plasmodium in Etawa-goat blood.

**Method:** A cross-sectional study was conducted to explore the presence of *h-Plasmodium* in domestic goats' blood in pre-elimination malaria areas. 97 Etawa-goats' samples were taken by purposive sampling. Microscopic detection of human-plasmodium in Etawa-goat's blood was carried out on thick blood preparations by Giemsa staining.

**Results:** Human-plasmodium like was detected on four slides, with the findings of three slides resembling *P. vivax* trophozoites and one slide resembling *P. falciparum* trophozoites.

**Conclusion:** The presence of parasites similar to *P. vivax* and *P. falciparum* in goats' blood is important initial information to continue studies on the transmission of *h-Plasmodium* in domestic livestock. Replication studies in high case incidence areas are needed to complete the microscopic visualisation and are supported by molecular testing.

**Keywords:** Malaria, Human-Plasmodium like, Domestic Goat

## Introduction

Malaria is a disease caused by *human-Plasmodium (h-Plasmodium)*, transmitted by Anopheles and is one of the important infectious diseases throughout the world. Anopheles mosquito is a definitive host as well as a vector of *h-Plasmodium* parasitic spread.<sup>1</sup> Some Anopheles species have zoophilic properties, which prefer sucking

the blood of animals to that of humans.<sup>2</sup> The zoophilic nature of Anopheles is in accordance with the fact that the presence of livestock around residential homes is one of the factors related to its role as a barrier in the transmission of malaria,<sup>3-5</sup> although until now the real role of livestock as a barrier has not been known in detail.<sup>6</sup>

The results of blood meal tests on *Anopheles aconitus* from



several locations in Central Java Province showed that 93.5% came from animals and 6.5% from humans. Goat blood is the main source of the meal. In some locations where there are very few or no livestock at all, the human blood meal index rose to 54.3%.<sup>7</sup> The number of *Anopheles maculatus* being caught in the garden with goat bait is higher than in settlements with human bait (CBR = 42.38; MBR = 12.40).<sup>2</sup> *Anopheles* mosquito population is found far more in the cage of livestock than in a room filled with humans.<sup>5</sup>

The use of livestock to divert *Anopheles* attacks must be far enough from the settlement so that the zoophilic *Anopheles* does not attack the population.<sup>4</sup> The use of insecticide ruminants is effective to kill the mosquitoes but not effective for diverting *Anopheles* attacks.<sup>3</sup> One of the invasion mechanisms of *h-Plasmodium* into human red blood cells is through glycoprotein A and B receptors.<sup>8</sup> The existence of glycoprotein receptors on ruminant blood cells opens the opportunity for *h-Plasmodium* invasion of goat red blood cells in malaria-endemic areas. The similarity of glycoprotein A and B receptors possessed by human red blood cells and ruminant red blood cells<sup>9</sup> opens the chance of invasion of *h-Plasmodium* to ruminants red blood cells through zoophilic and zoonanthropophilic *Anopheles* bites.<sup>2</sup>

Kaligesing Region Purworejo Regency, which borders Kulonprogo Regency, is in a Menoreh hilly area which is one of the malaria-endemic areas that is relatively difficult to eradicate. Until 2014, Jatirejo Village still had API values of 1.46%.<sup>10</sup> In 2016, Jatirejo Village succeeded in reducing it to 0.32%.<sup>11</sup> Kaligesing is known as an area where its people like to breed Etawa-goats. The proportion of the livestock population in Kaligesing is 54,644 Etawa crossbred goats, 10,197 local goats, and 213 sheep.<sup>12</sup>

The existence of zoonanthropophilic vectors with abundant livestock populations and in malaria-endemic areas are three things that support each other in the process of transmission and spread of malaria. Zoophilic *Anopheles*' bite on domestic livestock is clearly unavoidable. If *Anopheles* already contains *h-Plasmodium* sporozoites, the entry of parasites into the body of cattle is inevitable. The presence of glycoprotein receptors on human red blood cells and ruminant animals should be taken into account in anticipation of the development of *h-Plasmodium* in

livestock bodies,<sup>9</sup> although humans and livestock certainly have different physiological conditions and immune responses. It is very interesting to start developing hypotheses regarding the ability of *h-Plasmodium* to breed in livestock bodies by initially detecting parasites in animal blood in malaria-endemic areas.

## Material and Method

The study design was cross-sectional. Samples of Etawa-goats around the homes of malaria-positive sufferers within a radius of 100 m in Jatirejo Village, Kaligesing Purworejo were collected. A total of 97 Etawa-goats were taken by purposive sampling technique from 25 cages. Collection of blood specimens of the Etawa crossbred goats was carried out in July 2018. A thick blood smear was made on each<sup>13</sup> and stained with Giemsa 1:20 for 45 minutes. Detection of *h-Plasmodium* in goat blood was carried out microscopically. The specified inclusion criteria were that Etawa-goats are within a maximum radius of 100 meters from the place where malaria sufferers live, that goats are 3 months old and have been in the study site for at least the last 3 months. The test was carried out in the Laboratory of Epidemiology and Tropical Diseases, University of Muhammadiyah Semarang. The research ethics certificate was issued by the Health Research Ethics Commission, Faculty of Public Health, Universitas Muhammadiyah Semarang.

## Results

Microscopic testing results on 97 goat blood preparations found parasites with a morphology resembling *h-Plasmodium* on four slides of thick blood (Table 1). The parasitic morphology of the subsequent findings was compared with reference morphology to confirm the findings. Microscopic findings showed clear and specific parasitic morphology of three slides resembling *Plasmodium vivax* (*P. vivax*) species and one slide resembling *Plasmodium falciparum* (*P. falciparum*). The stages found in *P. vivax* like are early-stage trophozoites, developmental trophozoites and the final stage of trophozoites (Figures 1, 2, and 3). *P. falciparum* like (Figure 4) can only be found in one form, namely the initial stage trophozoite which is in the form of a typical comma with a relatively small round nucleus and a very thin cytoplasm.

Table 1. Microscopic Detection of Thick Blood Smear

Parasite	Number (Slide)	Percentage (%)
<i>P. falciparum</i> like	1	1.0
<i>P. vivax</i> like	3	3.1
No parasites	93	95.9
Total	97	100

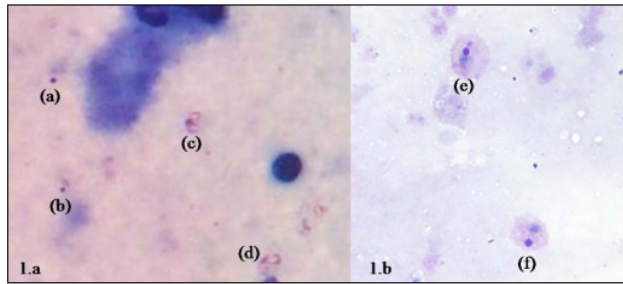


Figure 1. Trophozoite Stage of *P. vivax* like (1a) compared with Reference (1b)<sup>14</sup>

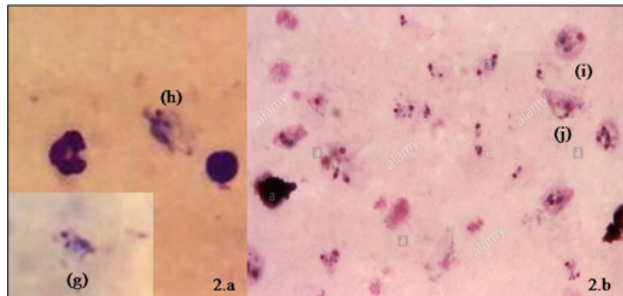


Figure 2. Trophozoite Stage of *P. vivax* like (2a) compared with Reference (2b)<sup>20</sup>

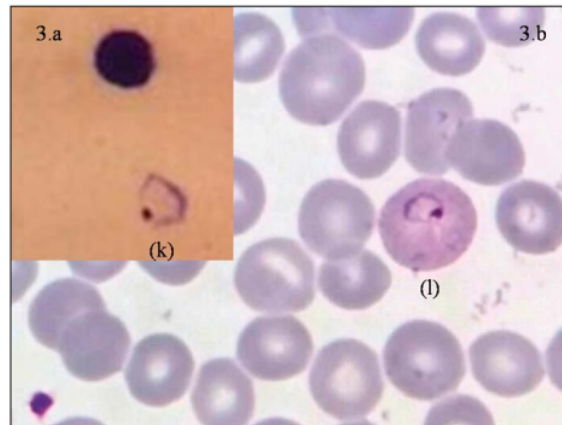


Figure 3. Trophozoite Stage of *P. vivax* like (3a) compared to Reference (3b)<sup>25</sup>

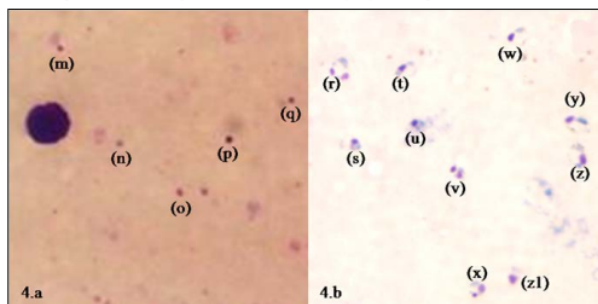


Figure 4. Trophozoite Stage of *P. falciparum* like (4a) compared with Reference (4b)<sup>23</sup>

## Discussion

The parasite morphology in the first blood slide shows the ring-shaped trophozoite stage of *P. vivax*. Morphological findings indicate the initial ring shape (a,b) and developmental shape (c,d). This form has a characteristic, one red core. There is a similarity in the shape and colour of parasitic nuclei morphology of the findings and references.<sup>14</sup> In the cytoplasm section, the findings show two different stages of development in which the cytoplasm only looks a little like eyebrow hair (a,b) similar to the shape of the reference morphology (e,f). The only difference is in the red zone<sup>15,16</sup> which is not apparent in the area of parasitic finding. It is not as clear as the morphology of the reference. Meanwhile, the parasitic morphology found in the developmental stage (c,d) showed a cytoplasm morphology with a clearer ring shape. The cytoplasm is very clear on the right and left sides of the parasitic nucleus and forms a ring but the shape is not smooth, resembling the typical ring shape of *P. vivax*. This shape is similar to the reference morphology in Figure 2(b).

On Giemsa-stained blood smears, RBCs infected with *P. vivax* will appear larger than uninfected cells.<sup>17</sup> Trophozoite may appear as thick, large ameboid rings. The diameter of parasites is about one half the RBC.<sup>18</sup> Schuffner's dots are present around the parasites.<sup>19</sup> The parasites found on the two slides of samples (g,h) closely resemble the trophozoite stage of *P. vivax* of reference (i,j).<sup>20</sup> The parasitic nucleus is relatively reddish in colour, very similar to the reference image. The parasitic cytoplasm of the dark purple findings appearing irregular in shape also bears a resemblance to the reference image. This cytoplasm shows that the trophozoite stage is advanced, not much different from the morphology of the reference image.<sup>20</sup> Schuffner spots<sup>15,16</sup> in the parasitic findings are not so obvious. The red zone is not as clear as the reference image, but there is still a reddish tinge around the parasitic cytoplasm (Figure 2).

The parasitic morphology of the third finding is a real ameboid ring (k) with a relatively large reddish round nucleus and intact non-smooth ring-shaped cytoplasm. Compared with reference morphology (l),<sup>21</sup> it is almost no different. Unfortunately, no reference morphology was found on the same type of slides. The parasitic findings were from thick drops while the reference morphology was from a thin blood smear. The difference between the two lies in the morphology of the red blood cells that are still intact in the reference morphology, while in the parasite, the discovery of red blood cells is not visible because they have been haemolysed.<sup>15</sup> The enlargement of red blood cells in *P. vivax* infection<sup>16,22</sup> is not that apparent in the thick blood slide, however, relative comparison with adjacent white blood cells shows that the infected red blood cells are already enlarged (Figure 3).

The next parasite found on the fourth slide showed a

morphology resembling the early stages of *P. falciparum* trophozoite. The parasitic morphology of the findings showed a round nucleus with a comma-shaped cytoplasm (m,p,q) similar to the reference morphology (g,u,v,w).<sup>23</sup> Another finding is that the parasite nucleus has a point shape only (n,o) similar to the reference morphology (z1) (Figure 4). Both forms of morphology are typical forms of *P. falciparum* trophozoite stage, the earliest stage in the thick blood, which is shaped like a dot, comma, exclamation mark and an incomplete ring resembling the wings of a flying bird.<sup>15</sup> In the initial stages, the shape of the trophozoite ring stage in the middle of the parasite is quite thin while the edge is relatively thicker which contains the nucleus and other organelles.<sup>16,24</sup> This causes the shape of the parasite to look like a ring in a Giemsa staining. The shape of this ring is part of the development of the parasitic trophozoite stage. Morphologically, the typical ring shape and number of rings can provide more information about the infection that occurs.<sup>25</sup>

## Conclusion

The findings of parasites in goat's blood being similar to *P. vivax* and *P. falciparum* are important early information. A similar study in malaria-endemic areas with high levels of parasitemia is needed to visualise parasite morphology on thin blood smears more clearly. Molecular detection must be done to complete these findings to reveal whether there is a transmission route of *h-Plasmodium* in domestic livestock populations.

## Acknowledgement

The best award was given to the Village Malaria interpreters at the Kaligesing Health Center who had assisted in specimen collection, the Purworejo District Health Office who provided a research permit and the Health Research Ethics Commission of the Faculty of Public Health, Universitas Muhammadiyah Semarang, who had reviewed and approved the research ethics.

## Source of Funding

There are no funders in this research.

## Conflict of Interests: None

## References

1. Harijanto P, Laihad F, Poesporodjo J. Epidemiologi Malaria di Indonesia [Internet]. Buletin Jendela Data dan Informasi Kesehatan, Kementerian Kesehatan RI; 2011 [cited 2021 Jan 20]. Available from: <https://pusdatin.kemkes.go.id/download.php?file=download/pusdatin/buletin/buletin-malaria.pdf>. Indonesian.
2. Shinta, Sukowati S, Pradana A, Marjianto, Marjana P. Beberapa Aspek Perilaku Anopheles maculatus Theobald di Pituruh, Kabupaten Purworejo, Jawa Tengah. Bul Penelit Kesehat [Internet]. 2013 [cited

- 2021 Jan 20];41(3):131-41. Available from: <http://ejournal.litbang.depkes.go.id/index.php/BPK/article/view/3284/3278>. Indonesian.
3. Hanafy I, Soviana S, Hadi UK. Keanekaragaman Jenis, Kepadatan Dan Aktivitas Menghisap Darah Anopheles (Diptera: Culicidae) Pada Aplikasi Zooprofilaksis Di Daerah Endemis Malaria [Internet]. Sekolah Pascasarjana Institut Pertanian Bogor; 2015 [cited 2021 Jan 20]. Available from: <https://repository.ipb.ac.id/handle/123456789/77542>. Indonesian.
  4. Donnelly B, Berrang-Ford L, Ross NA, Michel P. A systematic, realist review of zooprophyllaxis for malaria control. *Malar J*. 2015 Aug;14(1):313. [PubMed] [Google Scholar]
  5. Yakubu A, Singh A. Livestock : An alternative mosquito control measure. *Sokoto J Vet Sci*. 2008;7(1). [Google Scholar]
  6. Hurd H. Can cows protect against mosquito bites ? [Internet]. *Biomed Central Blogs*; 2014 [cited 2014 Mar 27]. Available from: <http://blogs.biomedcentral.com/bugbitten/2014/03/27/can-cows-protect-against-mosquito-bites-2/>
  7. Kirnowardoyo S. Status of Anopheles malaria vectors in Indonesia. *Southeast Asian J Trop Med Public Health*. 1985 Mar;1:129-32. [PubMed] [Google Scholar]
  8. Cowman AF, Healer J, Marapana D, Marsh K. Review malaria: biology and disease. *Cell*. 2016 Oct;167(3):610-24. [PubMed] [Google Scholar]
  9. Lobo C. Babesia divergens and plasmodium falciparum use common receptors, glycoporphins A and B, to invade the human red blood cell. 2005 Jan;73(1):649-51. [PubMed] [Google Scholar]
  10. Dinas Kesehatan Kab [Internet]. Puworejo. Profil Kesehatan: Dinas Kesehatan Kabupaten Purworejo. Purworejo; 2015 [cited 2021 Jan 21]. Available from: <https://docplayer.info/70633864-Profil-kesehatan-2015.html>. Indonesian.
  11. Dinas Kesehatan Purworejo [Internet]. Angka Kasus Malaria. Purworejo; 2016 [cited 2021 Jan 21]. Available from: <https://www.who.int/indonesia/purworejo-eliminasi-malaria>. Indonesian.
  12. Purworejo BPS [Internet]. Populasi Ternak Menurut Kecamatan di Kabupaten Purworejo; [cited 2021 Jan 21]. Available from: <https://purworejokab.bps.go.id/statictable/2015/05/21/18/populasi-ternak-menurut-kecamatan-di-kabupaten-purworejo-tahun-2013.html>. Indonesian.
  13. Mathison BA, Pritt BS. Update on malaria diagnostics and test utilization. *J Clin Microbiol*. 2017 Jul;55(7):2009-17. [PubMed] [Google Scholar]
  14. mcdinternational.org [Internet]. Diagnostic Finding Malaria: Ring-form trophozoites in a thick blood smear; 2011 [cited 2019 Aug 19]. Available from: [https://www.mcdinternational.org/trainings/malaria/english/DPDx5/HTML/Frames/M-R/Malaria/vivax/body\\_malariadfvivring](https://www.mcdinternational.org/trainings/malaria/english/DPDx5/HTML/Frames/M-R/Malaria/vivax/body_malariadfvivring)
  15. Chiodini P, Moody A, Manser D. Atlas of medical helminthology and protozoology. 4th ed. Horne T, editor. London: Churchill Livingstone; 2001. p. 61-9. [Google Scholar]
  16. Mahmud R, Lim YA, Amir A. Medical parasitology. Cham, Switzerland: Springer International Publishing; 2017. 40 p. [Google Scholar]
  17. Adams JH, Mueller I. The biology of plasmodium vivax. *Cold Spring Harb Perspect Med*. 2017;7(9). [PubMed] [Google Scholar]
  18. Menkin-Smith L, Winders W. Malaria (Plasmodium Vivax) [Internet]. In: StatPearls. Treasure Island (FL): StatPearls Publishing; 2019 [cited 2019 May 4]. Available from: <https://www.ncbi.nlm.nih.gov/books/NBK538333/>. [Google Scholar]
  19. CDC. Laboratory Diagnosis of Plasmodium vivax [Internet]. Centre for Diseases Control and Prevention; 2017 [cited 2021 Jan 21]. p. 1-4. Available from: [https://www.cdc.gov/dpdx/resources/pdf/benchAids/malaria/Pvivax\\_benchaidV2.pdf](https://www.cdc.gov/dpdx/resources/pdf/benchAids/malaria/Pvivax_benchaidV2.pdf)
  20. Melvin M. Photomicrograph of the malaria causing parasite Plasmodium vivax, in ring and young trophozoite forms, on a thick film blood smear with Giemsa stain [Internet]. Alamy's library from CDC; 1971 [cited 2019 Aug 19]. Available from: <https://www.alamy.com/stock-photo-photomicrograph-of-the-malaria-causing-parasite-plasmodium-vivax-in-173101553.html>
  21. Keas BE. Microscopy - Plasmodium species [Internet]. Michigan State University; 1999 [cited 2021 Jan 21]. Available from: <https://msu.edu/course/zol/316/psppscope.html>
  22. CDC [Internet]. Ring-form trophozoites of P. vivax in thick and thin blood smears. U.S. Department of Health & Human Services; 2017 [cited 2019 Aug 19]. Available from: <https://www.cdc.gov/dpdx/malaria/index.html>
  23. Image Library [Internet]. Plasmodium falciparum: Ring form trophozoites in thick blood smears (Image Library Malaria); 2009 [cited 2019 Aug 17]. Available from: [https://mcdinternational.org/trainings/malaria/english/dpdx5/html/ImageLibrary/M-R/Malaria/falciparum/body\\_Malaria\\_falciparum\\_il4](https://mcdinternational.org/trainings/malaria/english/dpdx5/html/ImageLibrary/M-R/Malaria/falciparum/body_Malaria_falciparum_il4)
  24. Bannister LH, Hopkins JM, Fowler RE, Krishna S, Mitchell GH. A brief illustrated guide to the ultrastructure of Plasmodium falciparum asexual blood stages. *Parasitol Today*. 2000 Oct;16:427-33. [PubMed] [Google Scholar]
  25. Balestra B, Carnino L. In vitro exflagellation of Plasmodium vivax. *New Engl J Med*. 2016;375(12):e27. [Google Scholar]

# Larvicidal activity evaluation of the chemical compounds isolated from n-hexane extract of Derris elliptica root against the Temephos- susceptible strain of Aedes aegypti larvae

## ORIGINALITY REPORT

11%

SIMILARITY INDEX

10%

INTERNET SOURCES

7%

PUBLICATIONS

4%

STUDENT PAPERS

## PRIMARY SOURCES

1	<a href="https://discovery.researcher.life">discovery.researcher.life</a> Internet Source	5%
2	<a href="http://jurnal.unimus.ac.id">jurnal.unimus.ac.id</a> Internet Source	2%
3	<a href="http://ejournal2.litbang.kemkes.go.id">ejournal2.litbang.kemkes.go.id</a> Internet Source	1%
4	<a href="http://journals.plos.org">journals.plos.org</a> Internet Source	1%
5	Rani Tiyas Budiyantri, Roro Isyawati Permata Ganggi, Murni Murni. "Factors Related to Women Health Literacy in The Coastal Area at Semarang City", Jurnal Aisyah : Jurnal Ilmu Kesehatan, 2021 Publication	1%
6	<a href="http://www.ijert.org">www.ijert.org</a> Internet Source	<1%
7	<a href="http://ejournal.poltekkes-smg.ac.id">ejournal.poltekkes-smg.ac.id</a> Internet Source	<1%

8 Olaf Perdijk, Charles Arama, Pablo Giusti, Bakary Maiga et al. "Haptoglobin phenotype prevalence and cytokine profiles during Plasmodium falciparum infection in Dogon and Fulani ethnic groups living in Mali", *Malaria Journal*, 2013  
Publication

---

9 [journal.ugm.ac.id](http://journal.ugm.ac.id)  
Internet Source

---

10 [www.ncbi.nlm.nih.gov](http://www.ncbi.nlm.nih.gov)  
Internet Source

---

11 Debasish Chattopadhyaya. "Carriage Rate of Coagulase Negative Staphylococci in a Rural Human Population with or without Companion Livestock", *Journal of Communicable Diseases*, 2020  
Publication

---

12 [scifes.fkm.ui.ac.id](http://scifes.fkm.ui.ac.id)  
Internet Source

---

Exclude quotes Off  
Exclude bibliography On

Exclude matches < 5 words



# Larvicidal activity evaluation of the chemical compounds isolated from n-hexane extract of Derris elliptica root against the Temephos- susceptible strain of Aedes aegypti larvae

---

## GRADEMARK REPORT

---

FINAL GRADE

**/0**

GENERAL COMMENTS

**Instructor**

---

PAGE 1

---

PAGE 2

---

PAGE 3

---

PAGE 4

---

PAGE 5

---