

# Micorencapsulation brownseaweed

*by* Nur Hidajah

---

**Submission date:** 01-Nov-2022 01:31PM (UTC+0700)

**Submission ID:** 1941221255

**File name:** Nutrition\_Vol10\_No1\_p\_349-359.pdf (513.27K)

**Word count:** 6318

**Character count:** 31290



## Microencapsulation of Umami Flavor Enhancer from Indonesian Waters Brown Seaweed

NURHIDAJAH<sup>1</sup>, BOBY PRANATA<sup>1</sup>, MUHAMMAD YUSUF<sup>1</sup>,  
YUNAN KHOLIFATUDDIN SYA'DI<sup>1</sup>, and DIODE YONATA<sup>1\*</sup>

<sup>1</sup>Department of Food Technology, Muhammadiyah University of Semarang, Semarang, Indonesia.

### Abstract

Sargassum aquifolium is a type of brown seaweed that grows in Indonesian waters. The L-glutamic acid in Sargassum aquifolium extract can be optimized to be a natural umami flavor enhancer. Spray drying is used for the manufacture of umami flavor enhancing microcapsules, where the core ingredient (extract of Sargassum aquifolium) is coated with 10, 20, and 30% (w/v) Maltodextrin (MD). The increase in coating material caused the water content, water activity, and hygroscopicity of the microcapsules to decrease significantly. This is followed by an increase in bulk and tapped density, as well as powder flowability. The particle size distribution is getting smaller, with smooth surface morphology and uniform shape, and the microcapsule L-glutamic acid levels increased with the addition of the MD concentration. The increase in coating material had a negative impact on the wettability time of the flavor enhancer, the color of the product was slightly degraded but the brightness increased significantly. Meanwhile, the water soluble index and water absorption index for microcapsules did not increase the coating material's increase. In conclusion, the best umami flavor enhancing microcapsules from Sargassum aquifolium seaweed extract was produced by adding 30% MD coating material which was dried by spray drying.



### Article History

Received: 23 February 2021

Accepted: 03 December 2021

### Keywords

Sargassum Aquifolium;  
Spray Drying;  
Maltodextrin;  
Microencapsulation;  
Umami Flavor  
Enhancer.

### Introduction

The utilization of seaweed is not limited to a source of hydrocolloid compounds, it also produces a unique flavor. Components such as free amino acids, 5'-nucleotides, guanosine-5'-monophosphate

(GMP), and inosine-5'-monophosphate (IMP) from seaweed synergize with each other which then produces the umami taste. Seaweed's umami compounds have aroused the interest of researchers in recent years.<sup>1-4</sup> The umami compound was

**CONTACT** Diode Yonata ✉ [yonata@unimus.ac.id](mailto:yonata@unimus.ac.id) 📍 Department of Food Technology, Muhammadiyah University of Semarang, Semarang, Indonesia.



© 2022 The Author(s). Published by Enviro Research Publishers.

This is an Open Access article licensed under a Creative Commons license: Attribution 4.0 International (CC-BY).

Doi: <http://dx.doi.org/10.12944/CRNFSJ.10.1.29>

disc<sup>5</sup>overed by Kikunae Ikeda over a century ago.<sup>5</sup> The free amino acids (L-glutamate and L-aspartate) in seaweed produce a stronger umami flavor than other compounds.<sup>6</sup> Several methods can acquire free amino acids, such as acid hydrolysis,<sup>7</sup> enzymatic processes<sup>4</sup> and hot water extraction.<sup>1</sup> The water extraction method is very applicative, environmentally friendly, and economical, with a shorter hydrolysis time of.<sup>8,9</sup>

Some researchers have hydrolyzed umami compounds from various kinds of brown seaweed,<sup>1,2,7</sup> but the umami compound of the brown seaweed of *Sargassum aquifolium* has never been studied. *Sargassum aquifolium* is a brown macroalga that grows in the low intertidal areas, spread across Southeast Asia, and is the most common form of *Sargassum* found in Indonesia.<sup>10</sup> Brown seaweed generally has alginate content, polysaccharides of this hydrocolloid class will form a gel after the hot water extraction process,<sup>11</sup> which causes its usage as umami flavoring less than optimal. Furthermore, umami compounds are also easily degraded during processing that involves heat.<sup>12</sup>

The spray drying method of microencapsulation has been shown to improve the heat stability of umami compounds, hence reducing the rate of degradation.<sup>13</sup> Maltodextrin (MD) has also been shown to be useful as a coating material in the microencapsulation of umami compounds<sup>4,5</sup> several studies<sup>16,3,14</sup> One of the key criteria for the microencapsulation of umami chemicals is the addition of an MD ratio of 15. It can considerably improve product solubility while lowering hygroscopicity.<sup>15,16</sup> However, there has never been any research on the microencapsulation<sup>13</sup> umami chemicals from *Sargassum aquifolium*. This study aimed to determine the optimal ratio of MD in the process of microencapsulation of umami flavor enhancer from *Sargassum aquifolium* of Indonesian waters using the spray drying method. As a natural umami taste enhancer, this new product might be a viable option.

### 13 Materials and Methods

#### Raw Materials

The raw materials used in this study are *Sargassum aquifolium* from the Beach of Garut, West Java, Indonesia, and MD with Dextrose Equivalent

(DE) 9-13 (Neo-Maldex). *Sargassum aquifolium* is cleaned of impurities such as sand, then dried in a drying cabinet (OVG-12, Agrowindo, Indonesia) at 50°C for 5 h. The dried *Sargassum aquifolium* was milled (disc mill model AGC-15, Agrowindo, Indonesia) and sieved with a 60 mesh sieve. Then seaweed powder is stored at low temperature (-20°C) until used.

#### Extraction of Umami Compounds

Seaweed powder (50 g) soaked in hot water (1000 mL) at 70°C ( $\pm 1^\circ\text{C}$ ) using a magnetic hot plate stirrer (Ika Magnetic Stirrer C-MAG HS7). The stirring speed is adjusted to 180 rpm for 30 minutes. The extract was then filtered using Whatman filter paper no. 41, the filtrate was frozen until used.<sup>8,17</sup>

#### Microencapsulation of Extract Seaweed

MD was added to the seaweed extract according to treatment (10, 20, and 30% w/v). Each mixture was homogenized separately using a homogenizer (Daihan HG-15D, Daihan Scientific Co., Ltd) at 3000 rpm for 15 minutes. Each emulsion was then dried in a BUCHI Mini Spray Dryer B-190. The drying conditions consist of an inlet air temperature of  $120 \pm 2^\circ\text{C}$ , an outlet air temperature of  $80 \pm 1^\circ\text{C}$ , and a feed flow rate of 6.0 mL/minute with a pressure of 1.5 bar. The powder obtained is then stored in a metalized vacuum sealer package until used.

#### L-Glutamic Acid

L-glutamic content was measured using the L-glutamic acid<sup>23</sup> assay kit from Megazyme (K-Glut, Ireland), which is measured by the increase in absorbance at 492 nm using<sup>28</sup> spectrophotometer (Shimadzu UV Vis-1601). 0.1 mL of the diluted flavor enhancer sample with 2.0 mL of distilled water, 0.5 mL of solution 1 (35 mL of buffer pH 8.6 plus 0.02% sodium azide w/v), 0.2 mL of solution 2 (nicotinamide-adenine dinucleotide/NAD<sup>+</sup> plus iodionitrotetrazolium chloride/IN<sup>40</sup>) and 0.05 mL of suspension 3 (diaphorase). Let stand for 2 minutes, then read the absorbance at 492 nm (A1). Then add 0.05 mL of solution 4<sup>14</sup> glutamate dehydrogenase/GDH), and let stand. Read the absorbances of the solutions at the end of the reaction (approx. 8-10 min) (A2).  $\Delta$ AL-glutamic acid is obtained after the final values A2-A1.

The concentration of L-glutamic acid can be calculated as follow:

$$c = \frac{V \times MW}{\epsilon \times d \times v} \times \Delta A_{\text{L-glutamic acid}} \text{ (g/L)}$$

Where

V = final volume (2.90 mL)  
 MV = molecular weight of L-glutamic acid (147.13 g/mol)  
 $\epsilon$  = extinction coefficient of INT-for mazaan at 492 nm = 19900 ( $1 \times 10^4 \text{ mol}^{-1} \times \text{cm}^{-1}$ )  
 d = light path (1.0 cm)  
 v = sample volume (0.1 mL)

#### 12 Moisture Content and Water Activity ( $a_w$ )

The moisture content of the microcapsule was determined using a moisture analyzer, Shimadzu, MOC63u (Japan). The  $a_w$  of the microcapsule was determined using a water activity analyzer, Rotronic, HygroPalm-HP23-Aw-A (Switzerland), at 25°C.

#### Color Analysis

Color measurement using the Minolta CR-310 Chromameter (Minolta Business Solutions Asia Pte Ltd) calibrated with a standard white ceramic plate ( $L^* = 99.45$ ;  $a^* = 0.14$ ;  $b^* = 0.27$ ) prior to reading. The hue angle,  $H^\circ$  and chroma,  $C^\circ$  were calculated by using  $H^\circ = \tan^{-1}(b^*/a^*)$  and  $C^\circ = (a^{*2} + b^{*2})^{1/2}$ . The hue angle is used to identify colors (red, yellow, green, and blue), whereas chroma distinguishes between bright and dull colors.<sup>18</sup>

#### Hygroscopicity

Each flavor enhancer with known weight was placed in a closed jar separately, the humidity was adjusted using saturated NaCl (Merck) to 75.5%, stored for 7 days with a controlled temperature of 25 °C. Hygroscopic value (Hg) is expressed in% of water vapor adsorbed by the product which is calculated using the following equation.

$$\text{Hg (\%)} = \frac{\Delta X}{X + X_i} \times 100$$

Where  $\Delta X$  = increase in flavor enhancer mass (g),  $X$  = flavor enhancer initial mass (g), and  $X_i$  = flavoring water content before exposure to environmental air (% g).<sup>18</sup>

#### 46 Bulk and Tapped Density

The Bulk Density value is obtained by pouring an amount of powder flavor enhancer into a 10 mL measuring cup, adjusting it to 0 then weighing it. The sample weight obtained is then divided by the volume of the measuring cup (10 mL) so that the bulk density value is obtained. The same procedure is also used to obtain the tapped density value, except when the measuring cup which has been filled with the sample is tapped mechanically until it reaches a constant volume. Tapped density is calculated using the same formula as bulk density.<sup>19,20</sup>

#### 18 Compressibility Index and Hausner Ratio

Compressibility index or Carr index and Hausner ratio were used to measuring the flow power of powder samples. Both are obtained from the density of the mass and tapped density of the flavor enhancer using the following equation.<sup>21</sup>

$$\text{Carr index (\%)} = \frac{\text{bulk density} - \text{tapped density}}{\text{tapped density}} \times 100$$

$$\text{Hausner ratio} = \frac{\text{tapped density}}{\text{bulk density}}$$

#### Wettability

Wettability was acquired after some flavor enhancer samples (10 g) were poured into 100 mL of distilled water that was already available in a 250mL chemical glass. The time it takes for the sample to first touch the water surface until it is completely wet is a wettability value.<sup>22</sup>

#### 20 Water Solubility Index (WSI) and Water Absorption Index (WAI)

The water solubility index (WSI) was obtained by careful weighing of the flavor-enhancing powder (1.0 g), mixed in 30 mL of water, and incubated 30 minutes in a water bath (Memmert WNB10) at 30 °C. The mixture was then centrifuged (Gemmy PLC-03 8 Hole) for 15 minutes at 3000 rpm. The supernatant obtained was collected into a known weight of petri dishes, while the residue was weighed after drying for 8 hours in an oven (Binder ED 53) at 105 °C and expressed as the WSI value that had been accumulated with the initial sample weight (1.0 g). The water absorption index (WAI) is calculated based on the mass of solids remaining in the supernatant divided by the initial sample weight (1.0 g).<sup>23</sup>

### Morphology Characterization and Particle Size Measurement

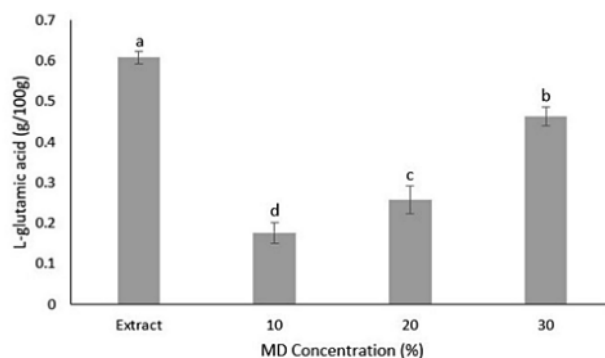
Morphology characterization of the flavor enhancing powder was analyzed using an analytical scanning electron microscope (JSM-6510LA, Jeol Ltd.). Particle size distribution was measured using a particle size analyzer LLPA-C10 (Labtron Equipment Ltd.), using the principle of laser light scattering, with a measurement range for dry disperse 0.01 - 2000 µm.

### Results and Discussion

#### Glutamic Acid Content

The presence of glutamic acid in flavor enhancers is the most significant factor since it influences the taste of umami generated. L-glutamic acid is 0.61g/100g in Sargassum aquifolium extract. MD as a coating material is quite effective

in protecting umami compounds from Sargassum aquifolium extract, where microcapsules with a 30% MD concentration have the L-glutamic acid 0.46 g/100g, while the lowest is at 10% MD concentration (0.18 g/100g). This indicates that MD has a chemical structure suitable for the core material, strengthened by previous research.<sup>16</sup> The chemical structure of the wall material that is not suitable will cause the coating of the core material to be not optimal so that a lot of it is wasted. The smaller the particle size, the more likely it will form a whole spherical structure like a ball which is known to be able to maintain the flavor-enhancing compounds optimally.<sup>24</sup> MD is also known to be able to significantly increase the thermal stability of flavor enhancing microcapsules and improve the controlled release of microcapsules for up to 60 minutes in boiling water.<sup>12,13</sup>



Different letter (a, b, c) indicated significant ( $p < 0.05$ ) different

Fig. 1: L-Glutamic Acid Content of Umami Flavor Enhancing Microcapsules

#### Moisture Content and $a_w$

The umami flavor enhancer from seaweed has low moisture content and  $a_w$  (Table 1), indicating good efficiency of the drying process and product stability. Microbial growth will not be optimal, so the product shelf life will be long.<sup>20</sup> This result follows other studies, which used MD as a coating material in the encapsulation process for umami compounds,<sup>8</sup> while Fazaili *et al.*,<sup>25</sup> also observed a decrease in water content with an increase in the concentration of the carrier material which is dried with various concentrations of MD. The use of MD in the flavor-enhancing

microencapsulation process resulted in moisture content within the desired range (3.10 - 3.63%). The water content of microcapsules coated with MD by spray drying generally ranges from 2.11 to 4.66%.<sup>26,27</sup>

Similar to water content, the  $a_w$  value of the flavor enhancer also decreases with the addition of MD as a coating material, in line with research conducted by Nambiar *et al.*,<sup>28</sup> However, excessive concentrations of MD will cause the product to stick to the nozzle and block the hot steam. The increase in MD up to 30% caused the  $a_w$  value of the product

to decrease from 0.25 to 0.23, which was previously confirmed by Cao *et al.*,<sup>29</sup>  $a_w$  values below 0.60 for powder products are good, able to suppress microbial growth, while  $a_w$  values of 0.2 - 0.4

are considered the most optimal because they are stable against adverse reactions such as oxidation, browning, hydrolytic, and enzymatic.<sup>30,31</sup>

**Tabel 1: Water content,  $a_w$ , hygroscopicity, water soluble index, and water absorption index of microcapsules**

| Concentration of MD | Water Content (%)        | $a_w$                    | Hygroscopicity (%)        | WSI (%)                   | WAI (%)                  |
|---------------------|--------------------------|--------------------------|---------------------------|---------------------------|--------------------------|
| 10%                 | 3.63 ± 0.11 <sup>c</sup> | 0.26 ± 0.02 <sup>c</sup> | 20.56 ± 0.61 <sup>c</sup> | 93.18 ± 0.43 <sup>a</sup> | 0.03 ± 0.01 <sup>a</sup> |
| 20%                 | 3.23 ± 0.05 <sup>b</sup> | 0.23 ± 0.01 <sup>b</sup> | 17.88 ± 0.38 <sup>b</sup> | 93.46 ± 0.50 <sup>a</sup> | 0.05 ± 0.01 <sup>a</sup> |
| 30%                 | 3.10 ± 0.03 <sup>a</sup> | 0.21 ± 0.01 <sup>a</sup> | 15.47 ± 0.42 <sup>a</sup> | 94.49 ± 0.18 <sup>a</sup> | 0.06 ± 0.01 <sup>a</sup> |

Note: The data are representations of the mean values ± standard deviation. Different superscripts in the same column showed statistically significant differences ( $p < 0.05$ ).

### Hygroscopicity

Hygroscopicity in the food sector is closely related to the porosity and amorphous sugar content of the product. The powder produced by spray-drying tends to form amorphous solids. The process of evaporation of water material takes place quickly so that the product is more hygroscopic.<sup>32</sup> The umami flavor enhancer has a fairly good hygroscopicity value with a value range of 15.47 - 20.56%, higher than that reported by Gagneten *et al.*,<sup>33</sup> Apart from being hygroscopic, spray dried products have a porous surface structure and a low glass transition temperature (Tg). Improper handling after drying, allows the product moisture content to increase. The addition of coatings is very effective in correcting these deficiencies.<sup>24-34</sup> MD has anti-hygroscopic properties which can change the balance of hydrophilic/hydrophobic particles, which results in lower water absorption.<sup>15</sup>

### Water Solubility Index and Water Absorption Index

The ideal powder product has a high WSI value. There can be no significant differences in the sample WSI. However, the powder WSI value was higher when the MD concentration increased. In general, the solubility of the product was very good (93.18 - 94.49%). The presence of MD increased the solubility of atomized samples. This is due to the very high hydroxyl (OH) group in the MD molecule. MD also produces a more porous powder microstructure, so that the powder will more easily dissolve in water.<sup>18,35</sup> The umami compounds in the

extract are also hydrophilic. Umami compounds will interact with taste receptors when they meet saliva, one of the unique and important characteristics of food flavor enhancers.<sup>8</sup>

Unlike the case with WSI, WAI is a solid that remains after the centrifugation process. The concentration of WAI is generally very small and was confirmed in this study. Taste enhancers had WAI values in the range of 0.03 - 0.06%. There was no statistically significant difference. The same result was also reported by Vidović *et al.*,<sup>23</sup> the low value of WAI was influenced by the hydrophilic group of the particles that bind water molecules which then form a gel. The values of WSI and WAI are the determining factors for the quality of powders used in the food industry. The industry prefers powder products with high WSI values and low WAI. Powders with poor solubility can cause high economic losses for companies.<sup>36</sup>

### Wettability, Particle Size, and Morphological Characteristics of Microcapsules

Apart from high solubility, flavor enhancers should ideally also have a fast wettability, do not float, and sink completely. The average wettability time of the seaweed flavor enhancer ranged from 427 to 689 s, faster than the wettability of the sumac extract microcapsules (1239 - 3263 s) reported by Caliskan & Dirim,<sup>30</sup> but longer than the wettability of the spray-dried blackberry microcapsules with the same coating material.<sup>37</sup> Although it has high solubility and porous particle structure,<sup>38,39</sup>

the main component of MD preparation is starch so it requires a longer wettability time.<sup>40</sup> There are several ways to speed up the wettability time, such as the addition of inulin in the coating material formulation which has been confirmed to be able to significantly shorten the wettability time

of the spray drying powder.<sup>36</sup> Several other aspects such as a decrease in the drying temperature (inlet or outlet) and the concentration of the coating material will cause a faster wettability time, due to the size and structure of the resulting particles.

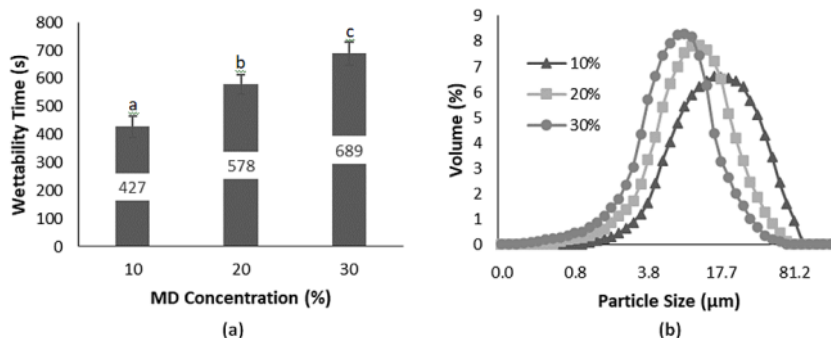


Fig. 2: (a) Wettability time, and (b) Microcapsule Particle Size Distribution

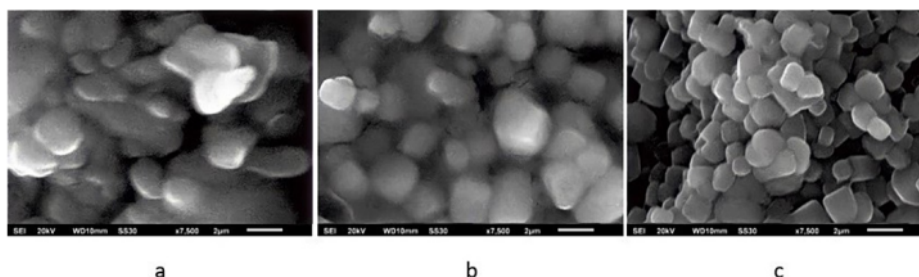


Fig. 3: Morphology of umami flavor enhancer with various concentrations of MD (a) 10 %, (b)20 %, and (c)30 %

The particle size of the umami flavor enhancers of *Sargassum aquifolium* ranges from 0.19 - 94.57 µm, smaller than that reported by Mayasari *et al.*,<sup>16</sup> (43.14 - 101.71 µm). The particle size distribution of each coating concentration was observed, flavor enhancers with MD 30% produced the smallest particle size distribution (0.19 – 59.371 µm) with a dominant size of 5.21 - 11.17 µm (47.51%), and a peak size of 8.23 µm, flavor enhancers with MD 20% produced particles with a size distribution of 0.62 - 69.60 µm, dominant size 8.23 - 7.21 (38.06%, with a peak size of 11.17 µm, while flavor enhancers with 10% MD had the largest particle size distribution (1.13 - 94.57 µm) with the size dominant

11.17 - 27.90 µm (45.05%), and peak particle size at 15.16 µm.

*Sargassum aquifolium* contains alginate polysaccharides. These hydrocolloid compounds cause less perfect encapsulation, irregular particle shape, and stick together. This condition can be seen in Figure 3 a. An increase in MD of up to 30% results in a smoother microcapsule surface and a more uniform and even shape of the particles (Figure 3c). Medina-Torres *et al.*,<sup>41</sup> reported that the results of microcapsules by spray drying with MD coating material have a very small size distribution (10-40 µm), with a rough, hollow,

irregular surface morphology with structural cracks on the surface. The high drying temperature will result in smaller particles with finer and more rounded morphology.<sup>16,35</sup>

#### Colour Parameters

The color attribute is one of the sensory attractions that need attention. Ideally, the flavor enhancer should be a bright color so that it doesn't affect the final color of the product when added. The seaweed extract used tends to be brown with details  $L^* = 58.31$ ;  $a^* = 6.29$  and  $b^* = 20.16$ , while the

MD used is bright white ( $L^* = 97.83$ ;  $a^* = 0.21$  and  $b^* = 1.94$ ). The  $L^*$  value of flavor enhancement significantly increased (76.76 to 81.49), resulting from the dominant white color of MD.<sup>42</sup>  $a^*$  (4.32 to 3.16) and  $b^*$  (16.35 to 14.29) values decreased as the coating agent concentration increased. MD produced good retention of flavor-enhancing pigments. This result was in line with the color change of the tea water extract microcapsules coated MD with spray drying reported by Nadeem *et al.*<sup>43</sup>

Table 2: CIELAB colour parameters of microcapsules

| Concentration of MD | $L^*$                     | $a^*$                    | $b^*$                     | $C^\circ$                 | Hue Angle                 |
|---------------------|---------------------------|--------------------------|---------------------------|---------------------------|---------------------------|
| 10%                 | 76.76 ± 0.91 <sup>a</sup> | 4.32 ± 0.12 <sup>c</sup> | 16.35 ± 0.22 <sup>c</sup> | 16.91 ± 0.23 <sup>c</sup> | 75.18 ± 0.37 <sup>a</sup> |
| 20%                 | 79.60 ± 0.97 <sup>b</sup> | 3.46 ± 0.09 <sup>b</sup> | 15.42 ± 0.15 <sup>b</sup> | 15.80 ± 0.16 <sup>b</sup> | 77.35 ± 0.24 <sup>b</sup> |
| 30%                 | 81.49 ± 0.21 <sup>c</sup> | 3.16 ± 0.33 <sup>a</sup> | 14.29 ± 0.56 <sup>a</sup> | 14.64 ± 0.56 <sup>a</sup> | 77.52 ± 1.33 <sup>c</sup> |

Note: The data are representations of the mean values ± standard deviation. Different superscripts in the same column showed statistically significant differences ( $p < 0.05$ ).

The hue angle is related to the color produced, the value 0° representing red and 90° representing yellow. With increasing MD concentration, the color change towards yellow is getting bigger, where the hue angle from 75.18 to 77.52, while the chroma value decreases (16.91 to 14.64), it is possible because high temperatures cause the color pigment to degrade slightly.<sup>28</sup> Caparino *et al.*,<sup>18</sup> also explained that spray drying resulted in very small particle size so that the resulting mango powder was brighter. The increase in brightness will cause a decrease in color sharpness (Chroma) in addition to the effect of white MD.

#### Bulk and Tapped Density, Carr Index and Hausner Ratio

Powder flowability can be determined by the value of bulk and tapped density, Carr index, and Hausner ratio. The bulk and tapped density values for the umami flavor enhancer can be seen in Table 3. The bulk density of seaweed flavor enhancer powder was found to be greater in microcapsules coated with 30% MD (0.46 g/mL), as well as the tapped density of powder at the same concentration (0.54 g/mL). MD particles that are bigger than the core particles

will cause the density of the powder produced to increase with the addition of MD. Besides, powders with lower water content are also known to have higher density.<sup>43,44</sup> This is in line with what Singh *et al.*,<sup>45</sup> reported, an increase in the concentration of MD up to 300 % which was dried by spray drying would cause the tapped density of powder to increase from 0.38 - 0.44 g/mL.

The increase in coating material concentration also has an impact on decreasing the volume of particles, which is caused by decreased air formation in the structure, so that the bulk and tapped density increases.<sup>19</sup> In contrast to coating materials, an increase in intake air temperature tends to result in a lower bulk particle density.<sup>16</sup> An increase in inlet temperature followed by a decrease in the feed flow rate causes the outer dry layer of the droplet surface to form rapidly, the outside will form a moisture-proof film while the inside forms a hollow structure.<sup>20</sup> When the hollow structure decreases, the particle volume decreases, which affects the cohesiveness of the particles. The cohesiveness of the structure is an important indicator of powder flow properties, expressed by Carr index, and Hausner ratio values.



Table 3: Bulk and tapped density, Carr index, and Hausner ratio of microcapsules

| Concentration of MD | Bulk Density (g/mL)      | Tapped Density (g/mL)    | Carr Index (%)            | Hausner Ratio            |
|---------------------|--------------------------|--------------------------|---------------------------|--------------------------|
| 10%                 | 0.31 ± 0.02 <sup>a</sup> | 0.38 ± 0.03 <sup>a</sup> | 18.60 ± 0.93 <sup>c</sup> | 1.23 ± 0.01 <sup>c</sup> |
| 20%                 | 0.37 ± 0.02 <sup>b</sup> | 0.45 ± 0.02 <sup>b</sup> | 17.41 ± 0.60 <sup>b</sup> | 1.21 ± 0.01 <sup>b</sup> |
| 30%                 | 0.46 ± 0.02 <sup>c</sup> | 0.54 ± 0.03 <sup>c</sup> | 14.17 ± 0.45 <sup>a</sup> | 1.17 ± 0.01 <sup>a</sup> |

Note: The data are representations of the mean values ± standard deviation. Different superscripts in the same column showed statistically significant differences ( $p < 0.05$ ).

Deshmukh *et al.*,<sup>46</sup> stated that spray drying generally results in a narrower particle size distribution with excellent flow properties. High Carr index, and Hausner ratio values indicate higher particle cohesiveness, and poor flowability.<sup>20</sup> According Lebrun *et al.*,<sup>21</sup> a good powder has the criteria for the Carr index value of  $\leq 15$  and the Hausner Ratio value of  $\leq 1.18$ . The flowability of the flavor enhancing powder with MD 10% and 20% was still acceptable, the best flowability was produced after the addition of 30% coating material with Carr index values of 14.17 (good) and Hausner ratio 1.17 (good). These results are consistent with the findings reported by Cao *et al.*,<sup>29</sup> Products with higher Hausner ratio tend to be cohesive, characterized by a higher moisture content.<sup>40</sup> Also, particle size, hardness, surface shape, elasticity to interstitial air determine the cohesiveness of the powder which determines the product flowability.<sup>15</sup>

### Conclusion

Based on the analysis of physical and chemical characteristics, the best umami flavor enhancing microcapsules from the Sargassum aquifolium seaweed extract from spray drying were produced by adding 30% MD. L-glutamic acid levels in the umami flavor enhancing microcapsules reach 0.46 g/100 g. Microcapsules have low moisture content (3.10%), aw (0.21), and Hg (15.47%),

which are good for product shelf life because they are able to withstand the rate of damage both biologically, chemically, and physically. Although the product wettability time is relatively long (689 s), the microcapsules have excellent solubility (WSI 94.49% and WAI 0.06%) and are favored by the industrial world. The powder is slightly yellowish-brown in color with good brightness ( $L^* 81.49$ ,  $a^* 3.16$ ,  $b^* 14.29$ ,  $C^\circ 14.64$ ,  $H^\circ 77.52$ ). The product flowability and cohesiveness were good, as indicated by the bulk and tapped density values of 0.46 g/mL and 0.54 g/mL, then Carr index 14.17 and Hausner ratio 1.17. The powder particle size ranged from 0.19 to 59.37  $\mu\text{m}$  with smooth surface morphology and uniform shape.

### Acknowledgements

The authors are thankful to the Research Institute of the Muhammadiyah University of Semarang which facilitated this research.

### Funding

The author(s) received no financial support for the research, authorship, and/or publication of this article.

### Conflict of Interest

The authors declare no conflict of interest.

### References

- Mouritsen OG, Duelund L, Petersen MA, Hartmann AL, Frøst MB. Umami Taste, free Amino Acid Composition, and Volatile Compounds of Brown Seaweeds. *J Appl Phycol.* 2019;31:1213-1232. doi:10.1007/s10811-018-1632-x
- Milinovic J, Campos B, Mata P, Diniz M, Noronha JP. Umami Free Amino Acids in Edible Green, Red, and Brown Seaweeds from the Portuguese Seashore. *J Appl Phycol.* 2020;32:3331-3339. doi:10.1007/s10811-020-02169-2

3. Kirkholt EM, Dikiy A, Shumilina E. Changes in the composition of Atlantic Salmon upon the brown seaweed (*Saccharina latissima*) treatment. *Foods*. 2019;8:1-18. doi:10.3390/foods8120625
4. Naseri A, Marinho GS, Holdt SL, Bartela JM, Jacobsen C. Enzyme-assisted extraction and characterization of protein from red seaweed *Palmaria palmata*. *Algal Res*. 2020;47:101849. doi:10.1016/j.algal.2020.101849
5. Lindemann B, Ogiwara Y, Ninomiya Y. The Discovery of Umami. *Chem Senses*. 2002;27:843-844. doi:10.1093/chemse/27.9.843
6. Mouritsen OG, Williams L, Bjerregaard R, Duelund L. Seaweeds for umami flavour in the New Nordic Cuisine. *Flavour*. 2012;1(4):1-12. doi:10.1186/2044-7248-1-4
7. Vieira EF, Soares C, Machado S, *et al.* Seaweeds from the Portuguese Coast as a Source of Proteinaceous Material: Total and Free Amino Acid Composition Profile. *Food Chem*. 2018;269:264-275. doi:10.1016/j.foodchem.2018.06.145
8. Harada-Padermo S dos S, Dias-Faceto LS, Selani MM, *et al.* Umami Ingredient: Flavor Enhancer from Shiitake (*Lentinula Edodes*) Byproducts. *Food Res Int*. 2020;137:109540. doi:10.1016/j.foodres.2020.109540
9. Mau JL, Chen YL, Chien RC, Lo YC, Lin SD. Taste Quality of the Hot Water Extract from *Flammulina Velutipes* and its Application in Umami Seasoning. *Food Sci Technol Res*. 2018;24(2):201-208. doi:10.3136/fstr.24.201
10. Puspita M, Setyawidati NAR, Stiger-Pouvreau V, *et al.* Indonesian *Sargassum* Species Bioprospecting: Potential Applications of Bioactive Compounds and Challenge for Sustainable Development. Vol 95. Elsevier Ltd; 2020. doi:10.1016/bs.abr.2019.12.002
11. Alba K, Kontogiorgos V. Seaweed Polysaccharides (*Agar*, *Alginate Carrageenan*). Elsevier; 2018. doi:10.1016/B978-0-08-100596-5.21587-4
12. Zhou LY, Li W, Pan WJ, *et al.* Effects of Thermal Processing on Nutritional Characteristics and Non-Volatile Flavor Components from *Tricholoma Lobayense*. *Emirates J Food Agric*. 2017;29(4):285-292. doi:10.9755/ejfa.2016-12-1815
13. Wu L, Zhang M, Liu Y, Sun Q. Characteristics and Release of Monosodium Glutamate Microcapsules Obtained by Spray Drying. *Dry Technol*. 2019;37(11):1340-1351. doi:10.1080/07373937.2018.1500483
14. Cho HY, Kim B, Chun JY, Choi MJ. Effect of Spray-Drying Process on Physical Properties of Sodium Chloride/Maltodextrin Complexes. *Powder Technol*. 2015;277:141-146. doi:10.1016/j.powtec.2015.02.027
15. Wang W, Zhou W. Characterization of Spray-Dried Soy Sauce Powders Using Maltodextrins as Carrier. *J Food Eng*. 2012;109(3):399-405. doi:10.1016/j.jfoodeng.2011.11.012
16. Mayasari E, Saloko S, Lestari OA, Ulfa M. Effect of Inlet Air Temperature on the Properties of Spray Dried *San-sakng* (*Albertisia papuana* Becc.) Leaf. *Turkish J Agric - Food Sci Technol*. 2020;8(6):1245-1249.
17. Poojary MM, Orlie V, Passamonti P, Olsen K. Improved Extraction Methods for Simultaneous Recovery of Umami Compounds from Six Different Mushrooms. *J Food Compos Anal*. 2017;63:171-183. doi:10.1016/j.jfca.2017.08.004
18. Caparino OA, Tang J, Nindo CI, Sablani SS, Powers JR, Fellman JK. Effect of Drying Methods on the Physical Properties and Microstructures of Mango (Philippine "Carabao" var.) Powder. *J Food Eng*. 2012;111:135-148. doi:10.1016/j.jfoodeng.2012.01.010
19. Reddy RS, Ramachandra CT, Hiregoudar S, Nidoni U, Ram J, Kammar M. Influence of Processing Conditions on Functional and Reconstitution Properties of Milk Powder Made from Osmanabadi Goat Milk by Spray Drying. *Small Rumin Res*. 2014;119(1-3):130-137. doi:10.1016/j.smallrumres.2014.01.013
20. Wang H, Sun Y, Li Y, *et al.* Effect of the Condition of Spray-Drying on the Properties of the Polypeptide-Rich Powders from Enzyme-Assisted Aqueous Extraction Processing. *Dry Technol*. 2019;37(16):2105-2115. doi:10.1080/07373937.2018.1563104
21. Lebrun P, Krier F, Mantanus J, *et al.* Design Space Approach in the Optimization of the Spray-Drying Process. *Eur J Pharm Biopharm*. 2012;80(1):226-234. doi:10.1016/j.ejpb.2011.09.014
22. Gong Z, Zhang M, Mujumdar A, Sun J. Spray Drying and Agglomeration of Instant Bayberry

- Powder. *Dry Technol.* 2008;26(1):116-121. doi:10.1080/07373930701781751
23. Vidović SS, Vladić JZ, Vaštag ŽG, Zeković ZP, Popović LM. Maltodextrin as a Carrier of Health Benefit Compounds in Satreja Montana Dry Powder Extract Obtained by Spray Drying Technique. *Powder Technol.* 2014;258:209-215. doi:10.1016/j.powtec.2014.03.038
24. Reineccius GA. The Spray Drying of Food Flavors. *Dry Technol.* 2004;22(6):1289-1324. doi:10.1081/DRT-120038731
25. Fazaeli M, Emam-Djomeh Z, Kalbasi Ashtari A, Omid M. Effect of Spray Drying Conditions and Feed Composition on the Physical Properties of Black Mulberry Juice Powder. *Food Bioprod Process.* 2012;90(4):667-675. doi:10.1016/j.fbp.2012.04.006
26. Lokuwan J. Characteristics of Micro encapsulated  $\beta$ -Carotene Formed by Spray Drying with Modified Tapioca Starch, Native Tapioca Starch and Maltodextrin. *Food Hydrocoll.* 2007;21:928-935. doi:10.1016/j.foodhyd.2006.10.011
27. Couto RO, Martins FS, Chaul LT, *et al.* Spray Drying of Eugenia Dysenterica Extract: Effects of In-Process Parameters on Product Quality. *Brazilian J Pharmacogn.* 2013;23(1):115-123. doi:10.1590/S0102-695X2012005000109
28. Nambiar RB, Sellamuthu PS, Perumal AB. Microencapsulation of Tender Coconut Water by Spray Drying: Effect of Moringa oleifera Gum, Maltodextrin Concentrations, and Inlet Temperature on Powder Qualities. *Food Bioprocess Technol.* 2017;10(9):1668-1684. doi:10.1007/s11947-017-1934-z
29. Cao X, Zhang M, Qian H, Mujumdar AS, Wang Z. Physicochemical and Nutraceutical Properties of Barley Grass Powder Microencapsulated by Spray Drying. *Dry Technol.* 2017;35(11):1358-1367. doi:10.1080/07373937.2017.1332074
30. Caliskan G, Nur Dirim S. The Effects of the Different Drying Conditions and the Amounts of Maltodextrin Addition During Spray Drying of Sumac Extract. *Food Bioprod Process.* 2013;91(4):539-548. doi:10.1016/j.fbp.2013.06.004
31. Chandralekha A, Tavanandi AH, Amrutha N, Hebbar HU, Raghavarao KSMS, Gadre R. Encapsulation of Yeast (*Saccharomyces Cerevisiae*) by Spray Drying for Extension of Shelf Life. *Dry Technol.* 2016;34(11):1307-1318. doi:10.1080/07373937.2015.1112808
32. Vardanega R, Muzio AFV, Silva EK, Prata AS, Meireles MAA. Obtaining Functional Powder Tea from Brazilian Ginseng Roots: Effects of Freeze and Spray Drying Processes on Chemical and Nutritional Quality, Morphological and Redispersion Properties. *Food Res Int.* 2019;116:932-941. doi:10.1016/j.foodres.2018.09.030
33. Gagneten M, Corfield R, Mattson MG, *et al.* Spray-Dried Powders from Berries Extracts Obtained Upon Several Processing Steps to Improve the Bioactive Components Content. *Powder Technol.* 2019;342:1008-1015. doi:10.1016/j.powtec.2018.09.048
34. Da Costa JMG, Silva EK, Toledo Hijo AAC, *et al.* Microencapsulation of Swiss Cheese Bioaroma by Spray-Drying: Process Optimization and Characterization of Particles. *Powder Technol.* 2015;274:296-304. doi:10.1016/j.powtec.2015.01.037
35. Avila EL, Rodríguez MC, Velásquez HJC. Influence of Maltodextrin and Spray Drying Process Conditions on Sugarcane Juice Powder Quality. *Rev Fac Nac Agron Medellin.* 2015;68(1):7509-7520.
36. Fernandes RVDB, Borges SV, Botrel DA. Gum arabic/Starch/Maltodextrin/Inulin as Wall Materials on the Microencapsulation of Rosemary Essential Oil. *Carbohydr Polym.* 2014;101(1):524-532. doi:10.1016/j.carbpol.2013.09.083
37. Ferrari CC, Germer SPM, Alvim ID, Vissotto FZ, de Aguirre JM. Influence of Carrier Agents on the Physicochemical Properties of Blackberry Powder Produced by Spray Drying. *Int J Food Sci Technol.* 2012;47(6):1237-1245. doi:10.1111/j.1365-2621.2012.02964.x
38. Tonon R V., Brabet C, Hubinger MD. Anthocyanin Stability and Antioxidant Activity of Spray-Dried Açai (*Euterpe oleracea* Mart.) Juice Produced with Different Carrier Agents. *Food Res Int.* 2010;43(3):907-914. doi:10.1016/j.foodres.2009.12.013
39. Santhalakshmy S, Don Bosco SJ, Francis S, Sabeena M. Effect of Inlet temperature on Physicochemical Properties of Spray-

- Dried Jamun Fruit Juice Powder. *Powder Technol.* 2015;274:37-43. doi:10.1016/j.powtec.2015.01.016
40. Caliskan G, Dirim SN. The Effect of Different Drying Processes and the Amounts of Maltodextrin Addition on the Powder Properties of Sumac Extract Powders. *Powder Technol.* 2016;287:308-314. doi:10.1016/j.powtec.2015.10.019
41. Medina-Torres L, Santiago-Adame R, Calderas F, *et al.* Microencapsulation by Spray Drying of Laurel Infusions (*Litsea glaucescens*) with Maltodextrin. *Ind Crops Prod.* 2016;90:1-8. doi:10.1016/j.indcrop.2016.06.009
42. Zorzenon MRT, Formigoni M, da Silva SB, *et al.* Spray Drying Encapsulation of Stevia Extract with Maltodextrin and Evaluation of the Physicochemical and Functional Properties of Produced Powders. *J Food Sci.* 2020;85(10):3590-3600. doi:10.1111/1750-3841.15437
43. Nadeem HŞ, Torun M, Özdemir F. Spray Drying of the Mountain Tea (*Sideritis Stricta*) Water Extract by using Different Hydrocolloid Carriers. *LWT - Food Sci Technol.* 2011;44(7):1626-1635. doi:10.1016/j.lwt.2011.02.009
44. Goula AM, Adamopoulos KG. Effect of Maltodextrin Addition during Spray Drying of Tomato Pulp in Dehumidified Air: I. Drying Kinetics and Product Recovery. *Dry Technol.* 2008;26(6):714-725. doi:10.1080/07373930802046369
45. Singh VK, Pandey S, Pare A, Singh RB. Optimization of Process Parameters for the Production of Spray Dried Ber (*Ziziphus jujube* L.) Powder. *J Food Sci Technol.* 2014;51(12):3956-3962. doi:10.1007/s13197-012-0897-3
46. Deshmukh R, Wagh P, Naik J. Solvent Evaporation and Spray Drying Technique for Micro- and Nanospheres/Particles Preparation: A Review. *Dry Technol.* 2016;34(15):1758-1772. doi:10.1080/07373937.2016.1232271

# Micorencapsulation brownseaweed

## ORIGINALITY REPORT

17%

SIMILARITY INDEX

13%

INTERNET SOURCES

12%

PUBLICATIONS

8%

STUDENT PAPERS

## PRIMARY SOURCES

|   |  |     |
|---|--|-----|
| 1 | <a href="http://ueaeprints.uea.ac.uk">ueaeprints.uea.ac.uk</a><br>Internet Source  | 2%  |
| 2 | <a href="http://secure.megazyme.com">secure.megazyme.com</a><br>Internet Source  | 1%  |
| 3 | <a href="http://cwww.intechopen.com">cwww.intechopen.com</a><br>Internet Source  | 1%  |
| 4 | <a href="http://iugspace.iugaza.edu.ps">iugspace.iugaza.edu.ps</a><br>Internet Source  | 1%  |
| 5 | Jelena Milinovic, Bruno Campos, Paulina Mata, Mário Diniz, João Paulo Noronha. "Umami free amino acids in edible green, red, and brown seaweeds from the Portuguese seashore", Journal of Applied Phycology, 2020<br>Publication             | <1% |
| 6 | Samara dos Santos Harada-Padermo, Liara Silva Dias-Faceto, Miriam Mabel Selani, Izabela Dutra Alvim et al. "Umami Ingredient: Flavor enhancer from shiitake (Lentinula edodes) byproducts", Food Research International, 2020<br>Publication | <1% |

---

|    |   |      |
|----|---|------|
| 7  | "Obtenção de extratos secos de cagaita (Eugenia dysenterica DC) pelo método de atomização: avaliação das propriedades físicas e potencial funcional in vitro",<br>'Universidade de Sao Paulo, Agencia USP de Gestao da Informacao Academica (AGUIA)'<br>Internet Source | <1 % |
| 8  | repository.pkr.ac.id<br>Internet Source   | <1 % |
| 9  | Submitted to SVKM International School<br>Student Paper   | <1 % |
| 10 | link.springer.com<br>Internet Source  | <1 % |
| 11 | www.tandfonline.com<br>Internet Source  | <1 % |
| 12 | company.namyangi.com<br>Internet Source   | <1 % |
| 13 | www.eurasianbiochem.org<br>Internet Source  | <1 % |
| 14 | www.megazyme.org<br>Internet Source   | <1 % |
| 15 | academic.oup.com<br>Internet Source   | <1 % |
| 16 | Sachin Ramdas Adsare, Uday S. Annapure.<br>"Microencapsulation of curcumin using  | <1 % |

---

# coconut milk whey and Gum Arabic", Journal of Food Engineering, 2021

Publication

17

Submitted to University of Central Lancashire

Student Paper

<1 %

18

Submitted to Aston University

Student Paper

<1 %

19

Submitted to De Montfort University

Student Paper

<1 %

20

[journals.plos.org](https://journals.plos.org)

Internet Source

<1 %

21

A. L. Muñoz-Herrera. "Microstructural, Physical, and Rehydration Properties of Maltodextrin Powders Obtained by Spray Drying", Water Properties in Food Health Pharmaceutical and Biological Systems ISOPOW 10 Reid/Water Properties in Food Health Pharmaceutical and Biological Systems ISOPOW 10, 05/14/2010

Publication

<1 %

22

Jackline Akinyi Ogolla, Boris Kulig, Liliana Bădulescu, Michael Wandayi Okoth et al. "Influence of Inlet Drying Air Temperature and Milk Flow Rate on the Physical, Optical and Thermal Properties of Spray-Dried Camel Milk Powders", Food and Bioprocess Technology, 2019

<1 %

23

Submitted to Universiti Teknologi MARA

Student Paper

<1 %

---

24

Aleksandra Gavarić, Jelena Vladić, Rita Ambrus, Stela Jokić et al. "Spray Drying of a Subcritical Extract Using Marrubium vulgare as a Method of Choice for Obtaining High Quality Powder", *Pharmaceutics*, 2019

Publication

<1 %

---

25

Islam, M.Z., Yutaka Kitamura, Yoshitsugu Yamano, and Mai Kitamura. "Effect of vacuum spray drying on the physicochemical properties, water sorption and glass transition phenomenon of orange juice powder", *Journal of Food Engineering*, 2016.

Publication

<1 %

---

26

Submitted to University of Sunderland

Student Paper

<1 %

---

27

Nunes, Graciele Lorenzoni, Brunna Cristina Bremer Boaventura, Stephanie Silva Pinto, Silvani Verruck, Fábio Seigi Murakami, Elane Schwinden Prudêncio, and Renata Dias de Mello Castanho Amboni. "Microencapsulation of freeze concentrated *Ilex paraguariensis* extract by spray drying", *Journal of Food Engineering*, 2015.

Publication

<1 %

---



28

Sh. Yousefi, Z. Emam-Djomeh, M. Mousavi, F. Kobarfard, I. Zbicinski. " Retention Rate Enhancement of Antioxidant and Cyaniding 3-Glucoside Components of the Reconstituted Product from Spray-Dried Black Raspberry Juice by Optimizing Process Parameters ", *Drying Technology*, 2014

Publication

&lt;1 %

29

Dibyakanta Seth, Hari Niwas Mishra, Sankar Chandra Deka. "Functional and reconstitution properties of spray-dried sweetened yogurt powder as influenced by processing conditions", *International Journal of Food Properties*, 2016

Publication

&lt;1 %

30

Halil İbrahim Odabaş, Ilkay Koca. "Process for production of microencapsulated anthocyanin pigments from *Rosa pimpinellifolia* L. fruits: optimization of aqueous two-phase extraction, microencapsulation by spray and freeze-drying, and storage stability evaluation", *International Journal of Food Engineering*, 2020

Publication

&lt;1 %

31

Luzia Marcia de Melo Silva, Francisco de Assis Cardoso Almeida, Francinalva Cordeiro de Sousa, Deise Souza de Castro et al. "Chemical and Physical Characterization of Peanut

&lt;1 %

Powder Extracts", Journal of Agricultural Science, 2018

Publication

32

Oscar Jiménez-González, José Ángel Guerrero-Beltrán. "Microencapsulates by spray of Lacticaseibacillus rhamnosus GG from fermented whole or skimmed cow's milk added with Mexican honeysuckle (*Justicia spicigera*) extract using mesquite gum as carrier agent", Heliyon, 2022

Publication

<1 %

33

Ozyurt, G.. "Seasonal changes of fatty acids of cuttlefish *Sepia officinalis* L. (Mollusca: Cephalopoda) in the north eastern Mediterranean sea", Food Chemistry, 200604

Publication

<1 %

34

Santhalakshmy, Swaminathan, Sowriappan John Don Bosco, Sneha Francis, and Mallela Sabeena. "Effect of inlet temperature on physicochemical properties of spray-dried jamun fruit juice powder", Powder Technology, 2015.

Publication

<1 %

35

[ogma.newcastle.edu.au](http://ogma.newcastle.edu.au)

Internet Source

<1 %

36

Anton Rahmadi, Siti Nurjannah, Yulian Andriyani, Maghfirotin Marta Banin et al. "Proximate analysis of the high phytochemical

<1 %

activity of encapsulated Mandai cempedak (Artocarpus champeden) vinegar prepared with maltodextrin and chitosan as wall materials", F1000Research, 2022

Publication

---

37

Gülşah Çalışkan Koç, Safiye Nur Dirim. "Spray dried spinach juice: powder properties", Journal of Food Measurement and Characterization, 2018

Publication

---

<1 %

38

Samaneh Sadeghzadeh Namavar, Reza Amiri Chayjan, Jafar Amiri Parian, Mohammad Ali Zolfigol. " Experimental optimization of chicory root ( L.) aqueous extracts formulation by novel approach of ongoing ultrasonic vacuum spray drying using response surface methodology ", Journal of Food Process Engineering, 2018

Publication

---

<1 %

39

Sophie Nansereko, John Muyonga, Yusuf B. Byaruhanga. "Optimization of drying conditions for Jackfruit pulp using Refractance Window Drying technology", Food Science & Nutrition, 2021

Publication

---

<1 %

40

Xu Si, Qinqin Chen, Jinfeng Bi, Xinye Wu, Jianyong Yi, Linyan Zhou, Zhaolu Li. "Comparison of different drying methods on

<1 %

the physical properties, bioactive compounds and antioxidant activity of raspberry powders", Journal of the Science of Food and Agriculture, 2016

Publication

41

de Barros Fernandes, Regiane Victória, Gerson Reginaldo Marques, Soraia Vilela Borges, and Diego Alvarenga Botrel. "Effect of solids content and oil load on the microencapsulation process of rosemary essential oil", Industrial Crops and Products, 2014.

Publication

<1 %

42

[etheses.whiterose.ac.uk](http://etheses.whiterose.ac.uk)

Internet Source

<1 %

43

[journals.matheo.si](http://journals.matheo.si)

Internet Source

<1 %

44

[mdpi-res.com](http://mdpi-res.com)

Internet Source

<1 %

45

[pdffox.com](http://pdffox.com)

Internet Source

<1 %

46

[tsukuba.repo.nii.ac.jp](http://tsukuba.repo.nii.ac.jp)

Internet Source

<1 %

47

[www.degruyter.com](http://www.degruyter.com)

Internet Source

<1 %

48

[www.mdpi.com](http://www.mdpi.com)

Internet Source

<1 %

49

[www.scielo.br](http://www.scielo.br)

Internet Source

<1 %

50

Subekti Hartiningsih, Yudi Pranoto, Supriyanto. " Structural and rheological properties of modified sago starch ( ) using treatment of steam explosion followed by acid-hydrolyzed as an alternative to produce maltodextrin ", International Journal of Food Properties, 2020

Publication

<1 %

Exclude quotes On

Exclude matches Off

Exclude bibliography On