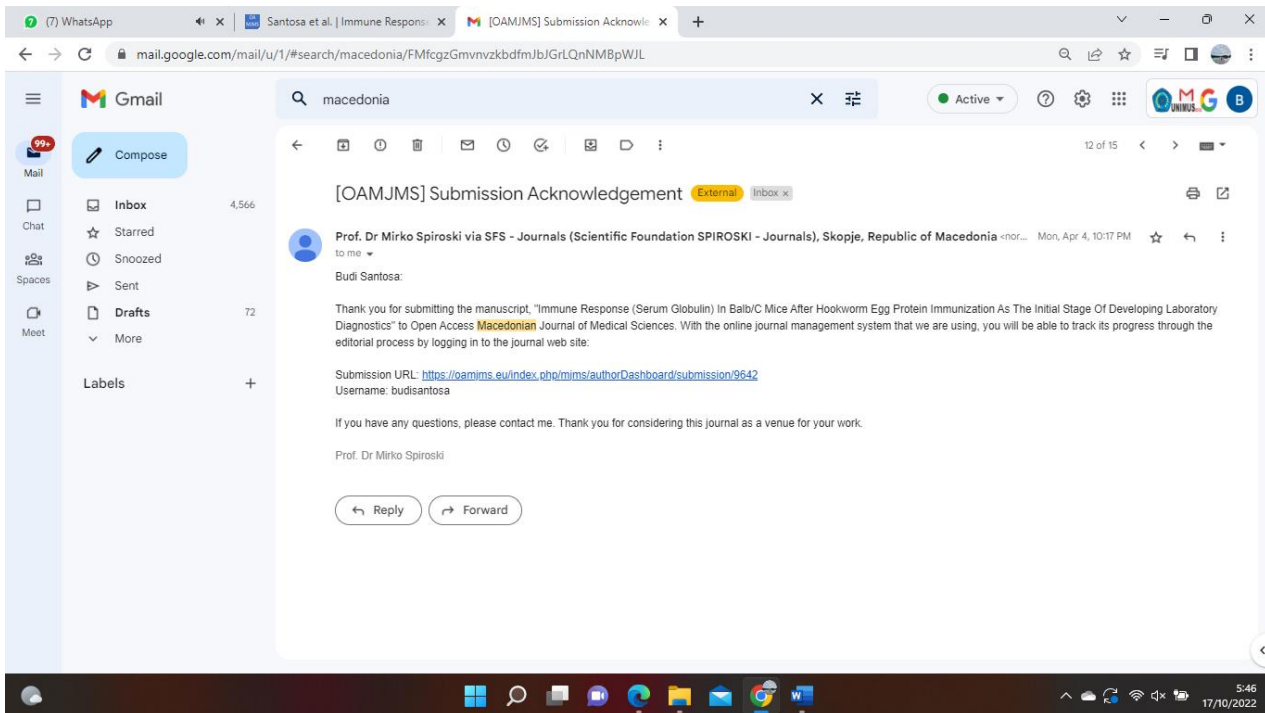
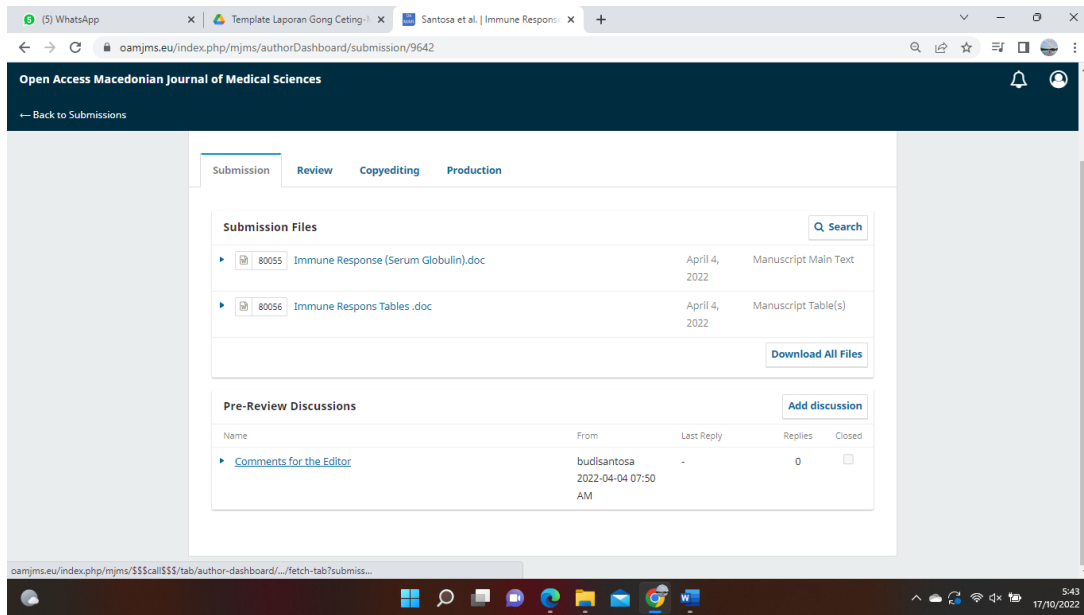


KORESPONDENSI MACEDONIA

SUMBIT ARTICLE



IMMUNE RESPONSE (SERUM GLOBULIN) IN BALB/C MICE AFTER HOOKWORM EGG PROTEIN IMMUNIZATION AS THE INITIAL STAGE OF DEVELOPING LABORATORY DIAGNOSTICS : AN IN VIVO APPROACH

Budi Santosa*, Arista Kurniasari Budi Fristiani*, Edi Dharmana**, Fitriani Nur Damayanti*, Heru Santoso Wahito Nugroho***

*Master program of medical laboratory science Universitas Muhammadiyah Semarang

**Faculty of Medicine Universitas Diponegoro Semarang

*** Public Health, Politeknik Kementrian Kesehatan Surabaya

Abstract

Hookworm infestation is still high and requires practical laboratory diagnosis with high sensitivity and specificity. Meanwhile, there are several limitations associated with the existing method, hence, a new method is essentially needed. Furthermore, the principle of immunological reactions needs to be developed by identifying the extent of hookworm eggs suspension immune responses. The BALB/c mouse is among the most widely used inbred models used in biomedical research, and is particularly utilized in immunology and infectious disease research. Therefore, this study aims to determine whether the protein concentration of hookworm eggs stimulates antibodies formation (proteins) in the serum of Balb/C mice. This is an experimental study with a Post-test only control design approach. Egg protein was isolated by removing the contents using a mini drill to immunize Balb/C mice, while the antibody response was observed by spectrophotometer and agglutination methods. The Chi-square and Posthoc statistical tests showed a significance $p \leq 0,001$ indicating a relationship between hookworm egg protein and agglutination results. The higher the antibody level, the more visible the agglutination and vice versa. These results are expected to form a basis for developing more practical and efficient diagnostic methods based on antigen-antibody reactions. **Keywords:** hookworm, mouse serum protein, hookworm egg protein.

Introduction

Worm infestation is one of the most common diseases that spread and infect people worldwide. In 2015, the World Health Organization (WHO) stated that 24% of the world's population suffers from worms. Sub-Saharan Africa, America, China, and East Asia have the largest incidence rates. Meanwhile, one of the causes of high worm infestation is the low quality of environmental sanitation (1), which leads to malnutrition, physical, mental, cognitive growth, and intellectual decline in children, as well as decreased immunity, disability, and death (2)(3). *Soil-transmitted helminth* (STH) is a group of soil-borne worms which consist of four species, namely *Ascaris lumbricoides*, *Trichuris trichiura*, and hookworms (*Necator americanus* and *Ancylostoma duodenale*) (4). The prevalence of this STH group is still high ranging from 45%-65% in Indonesia. The most prevalent is hookworm with an incidence of 32% in 1000 population (5)(6).

Helminthiasis diagnosis is established by laboratory examinations using conventional methods, including direct, indirect, and microscopic (7). In the direct method, reagents such as eosin, Lugol, and NaCl are used to observe the worm eggs clearly and properly. Meanwhile, in the indirect method, the duration of flotation and sedimentation is often used as a variable to obtain a false positive/negative result. Moreover, expertise is required in identifying worm eggs by laboratory personnel. The limitations are minimized by using an easy examination method with high sensitivity,

specificity, as well as positive and negative predictive value (8).

Method development needs to be carried out using the principle of antigen and antibody reactions. This method requires antibodies as reagents at an early stage to establish a diagnosis. Meanwhile, hookworm eggs contain immunogenic proteins with similar structures at all stages. Antibodies are obtained by immunizing worm egg protein in experimental animals (9). The BALB/c mouse is among the most widely used inbred models used in biomedical research, and is particularly utilized in immunology and infectious disease research. Their ability to produce plasma cell tumors within soft tissue is important in the production of monoclonal antibodies (mAbs). Furthermore, Balb/C mice showed the best response to polyclonal antibodies formation compared to other types (10)(11), the higher the antigenic level, the stronger the response (12)(13). The content of antibodies is observed by reacting the serum of immunized mice with hookworm egg protein using agglutination and spectrophotometry methods. Agglutination is one of the immunogenicity test methods that induces an antigen-antibody reaction in the particles form (14). Meanwhile, spectrophotometry was used to measure the concentration of immunoglobulin in the serum of Balb/C mice (15). Immunoglobulins (IgG, IgM, IgA, IgE, IgD) are present in serum Gamma globulin which is one of protein fractions (16)(17). Furthermore, globulin is a component of serum protein that indicates antibody expression (18)(19). The antibody concentration in the serum is important to

determine the extent of hookworm egg protein immune response for the development of laboratory test methods to establish worm infestations.

Materials And Methods

This is an experimental study with *Post-test only controls design* approach, consisting of 4 groups, namely 1 negative control, and 3 test groups (P1, P2, P3) each using 5 experimental animals. The outputs examined include hookworm egg protein and globulin levels from the Balb/C mice serum.

The stages are as follows:

1. The Making of Hookworm Egg Protein

Fecal samples that were only positive for hookworm eggs were screened using the microscopic method. Meanwhile, worm eggs isolation was carried out by modified flotation and sedimentation methods. Positive samples were separated using the saturated salt flotation method because the number of samples required was large. This process was carried out using a separating funnel to easily remove dirt deposits. The supernatant was collected for repeated centrifugation with physiological NaCl solution and filtered using a gauze with a pore diameter of 300 mesh.

The hookworm egg protein components were obtained by crushing the eggshells in a mixer using a mini drill for 10 minutes. The mixing was controlled microscopically to observe the egg grains, meanwhile, residual eggs when found were destroyed repeatedly. Furthermore, the sample was examined for protein content with a spectrophotometer to determine the

absorbance and protein concentration.

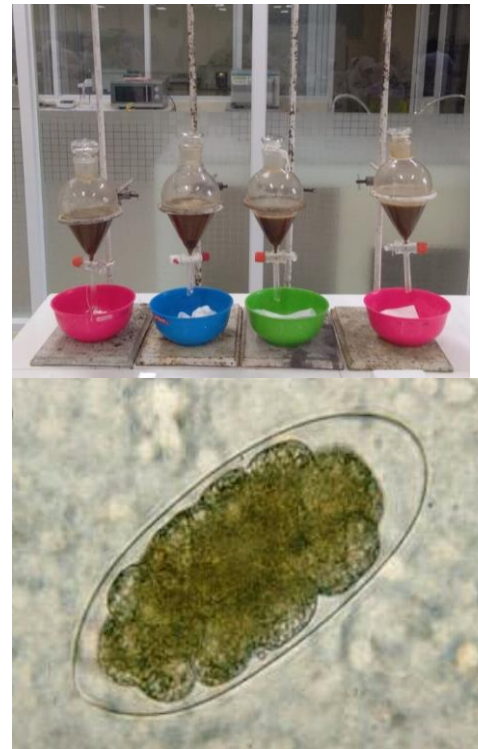


Figure 1. Modified Methods of Flotation, Sedimentation, and Microscopic Examination of Stool Samples

2. The Examination of Hookworm Egg Protein Levels

Hookworm egg protein suspensions were prepared in concentrations of 5%, 10%, and 15% while the protein content was measured using the spectrophotometer method by making a standard curve from a protein standard solution, measuring the absorbance of samples at each concentration, as well as a negative control of the stool suspension, and input data on a standard curve. The X-axis was protein concentration while Y-axis was the absorbance, hence, the formula for the equation of the line was obtained while the protein content was measured by entering the absorbance value.

3. Selection of Experimental Animals

The experimental animals selected were female

Balb/C mice aged 6-8 weeks weighing about 18-20 g because balb mice have a very good response to immunization, balb strain mice are more able to survive twice as strong as the CBA/CBA2 strain and C3H/HeJ. The immune status of the immunized individual can also determine the outcome of the immunization procedure. The age of mice used by young adults is good for the production of polyclonal antibodies (pAb). Traditionally, female animals have been used most often in pAb production. Females are generally more docile for handling purposes, and less aggressive in social interactions, and can therefore be grouped more successfully. While there is some evidence that androgens can slightly dampen antibody responses, there is no major scientific reason not to use male animals.

4. The Protein Immunization in Experimental Animals

Balb/C mice were injected with hookworm egg protein in treatments 1st (P1), 2nd (P2), 3rd (P3) with concentrations of P1 (5%), P2 (10%), and (15%). Meanwhile, the control was injected with negative stool samples. *Boosters* were carried out on the 7th, 14th, and 21st while on the 30th day blood harvest was carried out. Furthermore, this study used variations in the concentration of injection based on the recommended dose for

mice which is 5 ug per 100 ul injection. However, because the antigen used is in liquid form, the concentration was made directly into 5% and an additional variation of 10% and 15%.

5. Blood collection

Mice blood samples were obtained from the conjunctiva after 35 days using a capillary tube. It was drawn with minimum stress for mice, i.e. by administering anesthesia before sampling to reduce stress and pain, by veterinary staff. Furthermore, blood collection was carried out under warm conditions to ensure smooth blood flow, no sudden noise which might trigger stress, and the sampling site was kept clean to avoid blood contamination. To obtain the antibody, the sample was placed in a plain vacutainer tube, frozen, and then centrifuged at 10,000 rpm for 5 minutes. The supernatant formed was collected and placed into a sterile tube and then stored at -20°C.

6. The Spectrophotometric Test

The protein globulin level was obtained by calculating the difference between total protein and serum albumin which was read by the photometer method. Globulins make up 40% of the total protein, the remainder consisting of 60% albumin.

Globulin Formula (g/dl): Total Protein – Albumin

Table 1. Total protein procedure:

	Blank	Standard	Sample
Aquadest	20 ul	-	-
Lar Standard	-	20 ul	-
Sample	-	-	20 ul
Monoreagent (4R1:1R2)	1000 ul	1000 ul	1000

Table 2. Albumin procedure:

	Blank	Standard	Sample
Aquadest	10 ul	-	-
Lar Standard	-	10 ul	-
Sample	-	-	10 ul
Reagent	1000 ul	1000 ul	1000 ul

Each solution mixture was homogenized and then incubated at 37 degrees Celsius for 10 minutes, the sample absorbance was read to the blank at a wavelength of 546nm.

7. Agglutination Test

Mice serum from the control, as well as treatments 1, 2, and 3, were used as samples to check for the presence of antibody which are formed by the principle of agglutination. An antigen in this test is the hookworm egg protein concentration, meanwhile, the volume of each stage is 20 ul of both mice serum and antigen. Agglutination appeared in the form of grains on the slide and was observed for 2 minutes.

Ethical Clearance

This study was conducted after obtaining *ethical clearance* from the ethics committee of FKM UNIMUS Semarang No.423/KEPK-FKM/UNIMUS/2020. The Head of the Clinical

Pathology Laboratory, Muhammadiyah Semarang University, approved this study after receiving notification of *ethical clearance* result

RESULTS

Analysis of worm egg protein levels

The pure fecal suspension samples were examined for the number of hookworm eggs to predict the density. In each 20 microliters, there were 3-4 eggs/ field of view with a magnification of 100 times. This produced an image indicating that each ml of the pure sample contains 1000 hookworm eggs.

Examination of hookworm egg protein levels using the spectrophotometer method obtained the following data:

Table 3. Hookworm egg protein level based on the concentration (%)

Hookworm Egg Protein Concentration	Protein content (ug/ul)
Negative stool suspension	0,420
5%	39,305
10%	58,694
15%	72,679

The protein content of hookworm eggs is directly proportional to the concentration, hence, the higher the concentration, the higher the protein content. In the negative stool suspension, almost no protein content was found.

Analysis of serum Globulin protein levels in mice

The examination of globulin protein levels using a spectrophotometric device on 5 mice serum per each treatment group after 35 days of immunization using worm egg protein produced the following results:

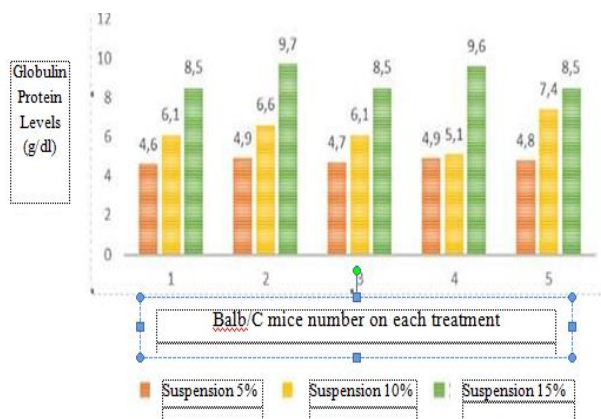


Figure 4. Graph of Serum Globulin Protein Levels in Mice After Immunization with Hookworm Egg Protein.

Based on Figure 2, the highest and lowest globulin protein content was found in the 15% hookworm egg protein suspension. The protein concentration is directly proportional to globulin

protein levels in the serum of Balb/C mice.

The antibody concentration in ug/ul based on the injection of antigen (hookworm egg protein content) is illustrated in the following table:

Table 5. Antibody concentration of egg serum Balb/C mice after immunization of antigen variation by Spectrophotometric method.

Stool Suspension Concentration	Hookworm egg protein content/Antigen (ug/ul)	Serum Protein Levels in Balb/C mice after immunization)/Antibodies (ug/ul)
5%	39.305	43.167
10%	58.694	68.802
15%	72.679	110.713
50%	100.086	-
100%	167.090	-

Based on the table, the higher the dose given, the higher the antibody expression produced.

Table 3. Balb/C Mice serum agglutination test results with hookworm egg protein concentration

Hookworm Egg Protein Concentration (Ag) (%)	Balb/C Mice Serum after immunization with hookworm egg protein					
	5%		10%		15%	
	Aggl	#Aggl	Aggl	#Aggl	Aggl	#Aggl
5% (39,305 ug/ul)	5	0	5	0	5	0
10% (58.694 ug/ul)	5	0	5	0	5	0
15% (72.679 ug/ul)	0	5	0	5	5	0
50% (100.086 ug/ul)	0	5	0	5	5	0
100% (167.090 ug/ul)	0	5	0	5	2	3

Information: Aggl: the amount of agglutination. #Aggl: the amount of agglutination does not occur

Antigen and antibody which reacted with the

same concentration all formed agglutination.

Stool Suspension on 5%	Stool Suspension 10%	- 1.480 0*	.3861	.007	-2.553	-.407
	Stool Suspension 15%	- 4.180 0*	.3861	.001	-5.253	-3.107
Stool Suspension on 10%	Stool Suspension 5%	1.480 0*	.3861	.007	.407	2.553
	Stool Suspension 15%	- 2.700 0*	.3861	.001	-3.773	-1.627
Stool Suspension on 15%	Stool Suspension 5%	4.180 0*	.3861	.001	3.107	5.253
	Stool Suspension 10%	2.700 0*	.3861	.001	1.627	3.773

Based on the

*. The mean difference is significant at the 0.05 level.

concentration of

Posthoc test, the p-value between each group was below 0.05, this indicates that there were significant differences in concentrations of 5%, 10%, and 15% with serum antibody levels in Balb/C mice.

The results showed that hookworm egg suspension contains numerous proteins and the levels increase according to the percentage of the suspension. Hookworm egg suspension immunized in Balb/C mice also indicated an increase in globulin levels. This was further supported by the agglutination result which showed that there were significant differences in concentrations of 5%, 10%, and 15% with serum antibody levels in Balb/C mice.

The ability of an immunogen to stimulate antibody formation depends on the type, mode of entry, the receiving individual, and the sensitivity of the method used for detection (20)(21), the greater the immunogenic protein the better. This is evident from the increase in protein as one of the dominant components in antibodies. Furthermore, the results showed that each

hookworm egg protein stimulates immune response formation characterized by increased levels of protein globulins in the experimental animals' serum. This increase activates components of the body's defenses such as lymphoid organs such as the spleen, lymph nodes, and lymphoid tissue associated with the intestines, including the tonsils where various antibodies are produced by stimulating B lymphocytes (plasma cells) (22) (23).

The modulating effect of worm infection on the immune system occurs due to changes in the balance of T helper1/T helper2 (Th1/Th2) to Th2 cells (Th2 polarized) (24). Acute infection with intestinal worms stimulates the host immune response known as *Th2 response* (25). This immune response polarization is characterized by an increase in Th2-specific *cytokines* such as *interleukin-4* (IL-4), *interleukin-5* (IL-5), *interleukin-13* (IL-13), as well as immunoglobulin E (IgE) (26)(27)(28) as demonstrated in the levels of the Gammaglobulin fraction in the total protein globulin. The results

showed that the higher the concentration of hookworm egg protein, the higher the globulin response.

High levels of globulins are used as material to develop immune response reactions for a more practical and efficient serological-based hookworm egg examination method.

The presence of hookworm egg protein is an early indication used as the most potent immunogen component in the macromolecular proteins form, such as polysaccharides, or other synthetic polymers including *polyvinylpyrrolidone (PVP)*. Meanwhile, the configuration of the antigen-antibody molecule only produces antibodies that are specific to one type of antigen (29)(30). The greater the immunogenic protein the better, meanwhile, protein increases in an organism as one of the dominant components in antibodies (31).

Agglutination test is one of the methods used to prove the presence of antigen and antibody reactions. One of the methods used is direct agglutination (32), which requires that the antigen and antibody react directly, with the antigen in the form of a particle or cell, hence, when it reacts with a specific antibody, clumps are formed (33).

CONCLUSION

The statistical tests showed that variations in the protein concentration of hookworm eggs produced antibodies indicated by the increase in serum protein of Balb/C mice, the occurrence of agglutination reactions, and the difference in agglutination results. These results are applicable as a reference for further studies to develop a

new simple method for detecting hookworm using serological methods.

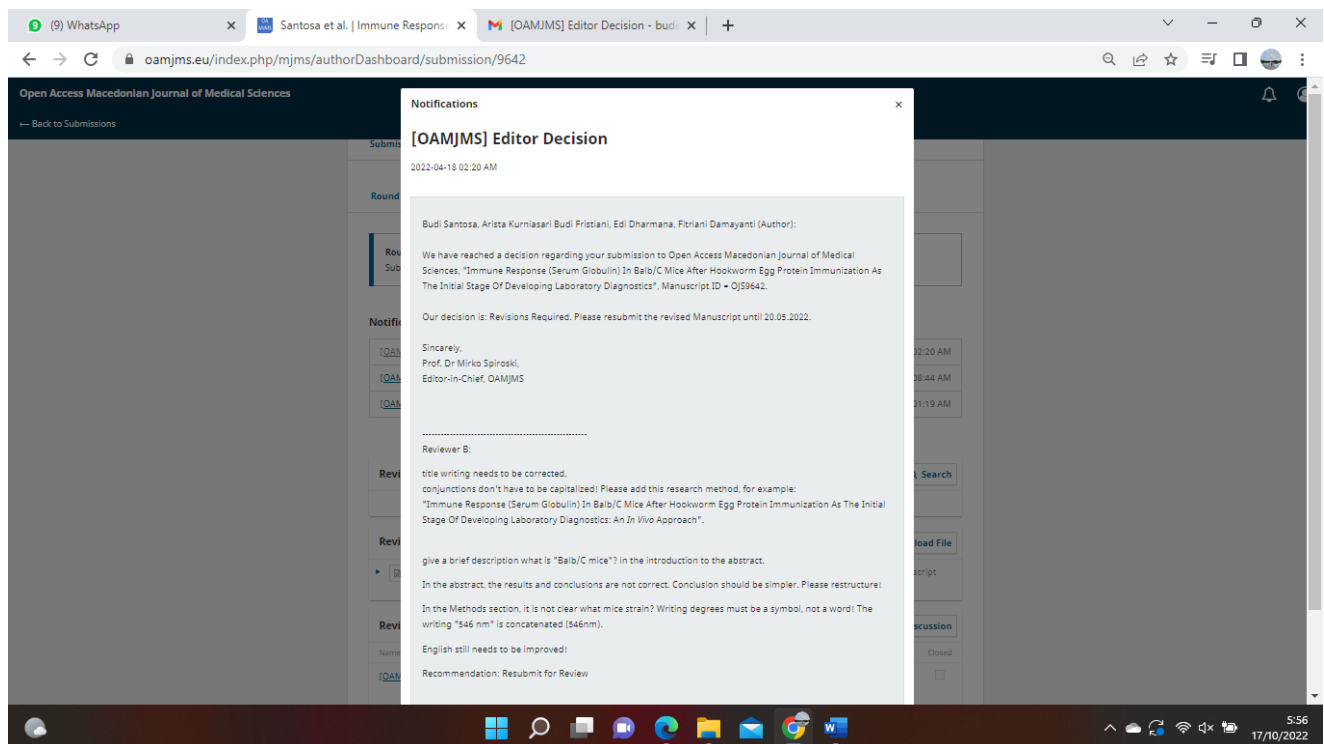
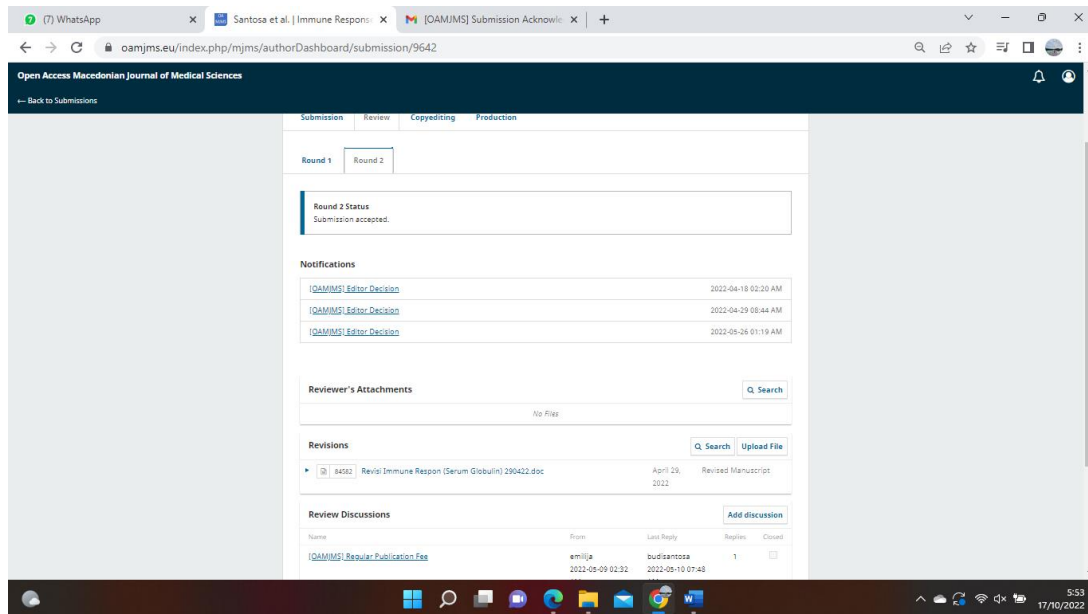
REFERENCES

1. Oswald WE, Stewart AEP, Kramer MR, Endeshaw T, Zerihun M, Melak B, et al. Association of community sanitation usage with soil-transmitted helminth infections among school-aged children in Amhara Region, Ethiopia. *Parasites and Vectors*. 2017;10(1):1–13.
2. Bharti B, Bharti S, Khurana S. Worm Infestation: Diagnosis, Treatment, and Prevention. *Indian J Pediatr* [Internet]. 2018;85(11):1017–24. Available from: <https://pubmed.ncbi.nlm.nih.gov/29127616/>
3. Kabore A, Ibikounle M, Tougoue JJ, Mupoyi S, Ndombe M, Shannon S, et al. Initiating NTD programs targeting schistosomiasis and soil-transmitted helminthiasis in two provinces of the Democratic Republic of the Congo: Establishment of baseline prevalence for mass drug administration. *Acta Trop* [Internet]. 2017;166:177–85. Available from: <https://pubmed.ncbi.nlm.nih.gov/27888125/>
4. Inocencio da Luz R, Linsuke S, Lutumba P, Hasker E, Boelaert M. Assessment of schistosomiasis and soil-transmitted helminths prevalence in school-aged children and opportunities for integration of control in local health services in Kwilu Province, the Democratic Republic of the Congo. *Trop Med Int Heal*. 2017;22(11):1442–50.
5. Dunn JC, Turner HC, Tun A, Anderson RM. Epidemiological surveys of, and research on, soil-transmitted helminths in Southeast Asia: A systematic review. *Parasites and Vectors* [Internet]. 2016;9(1):1–13. Available from: <http://dx.doi.org/10.1186/s13071-016-1310-2>
6. Rusjdi SR. Tinjauan Pustaka Infeksi Cacing dan Alergi. *J Kesehat Andalas*. 2015;4(1):322–5.
7. Khurana S, Sethi S. Laboratory diagnosis of soil-transmitted helminthiasis. *Trop Parasitol* [Internet]. 2017;7(2):86–91. Available from: <https://pubmed.ncbi.nlm.nih.gov/29114485/>
8. Ngwese MM, Ngwese MM, Manouana GP, Manouana GP, Moure PAN, Ramharther M, et al. Diagnostic techniques of soil-transmitted helminths: Impact on control measures. *Trop Med Infect Dis*. 2020;5(2):1–17.
9. Kato M, Yan H, Tsuji NM, Chiba T, Hanyu

- Y. A method for inducing antigen-specific IgG production by in vitro immunization. *J Immunol Methods* [Internet]. 2012;386(1–2):60–9. Available from: <https://pubmed.ncbi.nlm.nih.gov/22974834/>
10. Tang S, Liu Z, Li R, Chen Y, Zhao L, Shen H, et al. Preparation and identification of the polyclonal antibody against ATRX-C 2193-2492. *Xi Bao Yu Fen Zi Mian Yi Xue Za Zhi* [Internet]. 2017;33(4):536–9. Available from: <https://pubmed.ncbi.nlm.nih.gov/28395727/>
 11. Malaei F, Rasaei MJ, Paknejad M, Latifi AM, Rahbarizadeh F. Production and Characterization of Monoclonal and Polyclonal Antibodies Against Truncated Recombinant Dickkopf-1 as a Candidate Biomarker. *Monoclon Antib Immunodiagn Immunother* [Internet]. 2018;37(6):257–64. Available from: <https://pubmed.ncbi.nlm.nih.gov/30592704/>
 12. Francis JN, Thaburet J-F, Bonnet D, Sizer PJ, Brown CB, Georges B. Increasing cellular immunogenicity to peptide-based vaccine candidates using a fluorocarbon antigen delivery system. *Vaccine* [Internet]. 2015;33(8):1071–6. Available from: <https://pubmed.ncbi.nlm.nih.gov/25573036/>
 13. Rocha MCV da, Barés ME, Braga MCB. Quantification of viable helminth eggs in samples of sewage sludge. *Water Res* [Internet]. 2016;103:245–55. Available from: <https://pubmed.ncbi.nlm.nih.gov/27470467/>
 14. Roche AM, Richard AL, Rahkola JT, Janoff EN, Weiser JN. Antibody blocks the acquisition of bacterial colonization through agglutination. *Mucosal Immunol* [Internet]. 2015;8(1):176–85. Available from: <https://pubmed.ncbi.nlm.nih.gov/24962092/>
 15. Wu D, Piszczek G. Rapid Determination of Antibody-Antigen Affinity by Mass Photometry. *J Vis Exp* [Internet]. 2021;168:10.3791/61784. Available from: <https://pubmed.ncbi.nlm.nih.gov/33616097/>
 16. McCormack PL. Immune globulin (human) 10 % liquid: a review of its use in primary immunodeficiency disorders. *BioDrugs* [Internet]. 2013;27(4):393–400. Available from: <https://pubmed.ncbi.nlm.nih.gov/23703447/>
 17. Vaillant AAJ, Jamal Z, Ramphul K. Immunoglobulin [Internet]. In: *StatPearls Publishing*. Available from: <https://www.ncbi.nlm.nih.gov/books/NBK513460/>
 18. Jolles S, Borrell R, Zouwail S, Heaps A, Sharp H, Moody M, et al. Calculated globulin (CG) as a screening test for antibody deficiency. *Clin Exp Immunol* [Internet]. 2014;177(3):671–8. Available from: <https://pubmed.ncbi.nlm.nih.gov/24784320/>
 19. He J, Pan H, Liang W, Xiao D, Chen X, Guo M, et al. Prognostic effect of albumin-to-globulin ratio in patients with solid tumors: A systematic review and meta-analysis. *J Cancer* [Internet]. 2017;8(19):4002–10. Available from: <https://www.ncbi.nlm.nih.gov/pmc/articles/PMC5706002/>
 20. Kwong PD. What are the most powerful immunogen design vaccine strategies?: A structural biologist’s perspective. *Cold Spring Harb Perspect Biol* [Internet]. 2017;9(11):1–7. Available from: <https://www.ncbi.nlm.nih.gov/pmc/articles/PMC5540812/>
 21. Harding FA, Stickler MM, Razo J, DuBridge RB. The immunogenicity of humanized and fully human antibodies: Residual immunogenicity resides in the CDR regions. *MAbs* [Internet]. 2010;2(3):256–65. Available from: <https://www.ncbi.nlm.nih.gov/pmc/articles/PMC2881252/>
 22. Brown K, Sacks SH, Wong W. Tertiary lymphoid organs in renal allografts can be associated with donor-specific tolerance rather than rejection. *Eur J Immunol* [Internet]. 2011;41(1):89–96. Available from: <https://pubmed.ncbi.nlm.nih.gov/21182080/>
 23. Manuscript A. Overview of the immune response. *J Allergy Clin Immunol* [Internet]. 2010;125(2): S345. Available from: <https://www.ncbi.nlm.nih.gov/pmc/articles/PMC2923430/>
 24. Anuradha R, Munisankar S, Dolla C, Kumaran P, Nutman TB, Babu S. Parasite Antigen-Specific Regulation of Th1, Th2, and Th17 Responses in *Strongyloides stercoralis* Infection. *J Immunol* [Internet]. 2015;195(5):2241–50. Available from: <https://pubmed.ncbi.nlm.nih.gov/26202988/>
 25. Nair MG, Herbert DR. Immune polarization by hookworms : taking cues from T helper type 2, type 2 innate lymphoid cells

- and alternatively activated macrophages. *Immunol* [Internet]. 2016;148(2):115–24. Available from: <https://pubmed.ncbi.nlm.nih.gov/26928141/>
26. Ahmed N, French T, Rausch S, Kühl A, Hemminger K, Dunay IR, et al. Toxoplasma Co-infection Prevents Th2 Differentiation and Leads to a Helminth-Specific Th1 Response. 2017;7(July):1–12. Available from: <https://pubmed.ncbi.nlm.nih.gov/28791259/>
27. Bao K, Reinhardt RL. The differential expression of IL-4 and IL-13 and its impact on type-2 Immunity. *Cytokine* [Internet]. 2015;75(1):25–37. Available from: <https://www.ncbi.nlm.nih.gov/pmc/articles/PMC5118948/>
28. Henry EK, Inclan-rico JM, Siracusa MC, State R. Type 2 cytokine responses: regulating immunity to helminth parasites and allergic inflammation. *Curr Pharmacol Rep* [Internet]. 2017;3(6):346–59. Available from: <https://www.ncbi.nlm.nih.gov/pmc/articles/PMC5794032/>
29. Armstrong B. Antigen-antibody reactions. *ISBT Sci Ser* [Internet]. 2020;3(15):68–80. Available from: <https://onlinelibrary.wiley.com/doi/epdf/10.1111/voxs.12590>
30. Id TEG, Cepon-robins TJ, Liebert MA, Urlacher SS, Schrock JM, Harrington CJ, et al. PLOS ONE Market integration and soil-transmitted helminth infection among the Shuar of Amazonian Ecuador. *PLoS One* [Internet]. 2020;15:1–24. Available from: <http://dx.doi.org/10.1371/journal.pone.0236924>
31. Arur S, Schedl T. Generation and purification of highly-specific antibodies for detecting post-translationally modified proteins in vivo. *Nat Protoc* [Internet]. 2014;9(2):375–95. Available from: <https://pubmed.ncbi.nlm.nih.gov/24457330/>
32. Yeow N, Tabor RF, Garnier G. Direct measurement of IgM-Antigen interaction energy on individual red blood cells. *Colloids Surf B Biointerfaces* [Internet]. 2017;155:373–8. Available from: <https://pubmed.ncbi.nlm.nih.gov/28454066/>
33. Han S, Wang G, Xu N, Liu H. Quantitative Assessment of the Effects of Oxidants on Antigen-Antibody Binding In Vitro. *Oxid Med Cell Longev* [Internet]. 2016;2016(10):10–5. Available from:

REVIEWER



Gmail

Compose

Mail

Chat

Spaces

Meet

Inbox 4,566

Starred

Snoozed

Sent

Drafts 72

More

Labels +

Search: macedonia

Active

11 of 15

[OAMJMS] Editor Decision

Slavica Hristomanova-Mitkovska, MD, MSc via SFS - Journals (Scientific Foundation SPIROSKI - Journals), Skopje, Republic of Macedonia

Budi Santosa, Arista Kurniasari Budi Fristiani, Edi Dharmana, Fitriani Damayanti (Author):

We have reached a decision regarding your submission to Open Access **Macedonian Journal of Medical Sciences**, "Immune Response (Serum Globulin) in Balb/C Mice After Hookworm Egg Protein Immunization As The Initial Stage Of Developing Laboratory Diagnostics"; Manuscript ID = OJS9842.

Our decision is: **Revisions Required**. Please resubmit the revised Manuscript until 20.05.2022.

Sincerely,
Prof. Dr Mirko Spiroski,
Editor-in-Chief, OAMJMS

Reviewer B:

title writing needs to be corrected.
conjunctions don't have to be capitalized! Please add this research method, for example:
"Immune Response (Serum Globulin) In Balb/C Mice After Hookworm Egg Protein Immunization As The Initial Stage Of Developing Laboratory Diagnostics: An *In Vivo* Approach".

give a brief description what is "Balb/C mice"? in the introduction to the abstract.

In the abstract, the results and conclusions are not correct. Conclusion should be simpler. Please restructure!

In the Methods section, it is not clear what mice strain? Writing degrees must be a symbol, not a word! The writing "546 nm" is concatenated (546nm).

English still needs to be improved!

Recommendation: Resubmit for Review

REVISION

CORRECTION REVIEWER	REVISION
1. Title writing needs to be corrected, conjunctions don't have to be capitalized! Please add this research method, for example: "Immune Response (Serum Globulin) In Balb/C Mice After Hookworm Egg Protein Immunization As The Initial Stage Of Developing Laboratory Diagnostics: An In Vivo Approach".	Immune Response (Serum Globulin) In Balb/C Mice After Hookworm Egg Protein Immunization As The Initial Stage Of Developing Laboratory Diagnostics : An In Vivo Approach
2. Give a brief description what is "Balb/C mice"? in the introduction to the abstract.	The balb/c mouse is among the most widely used inbred models used in biomedical research, and is particularly utilized in immunology and infectious disease research
3. In the abstract, the results and conclusions are not correct. Conclusion should be simpler. Please restructure!	These results are expected to form a basis for developing more practical and efficient diagnostic methods based on antigen-antibody reactions.
4. In the Methods section, it is not clear what mice strain? Writing degrees must be a symbol, not a word! The writing "546 nm" is concatenated (546nm).	Each solution mixture was homogenized and then incubated at 37 degrees Celsius for 10 minutes, the sample absorbance was read to the blank at a wavelength of 546nm.

Macedonian

Immune Response (Serum Globulin) In Balb/C Mice after Hookworm Egg Protein Immunization As The Initial Stage Of Developing Laboratory Diagnostics : An In Vivo Approach

--Manuscript Draft--

Manuscript Number	
Article Type	Original Research Article
Keyword	Hookworm, mouse serum protein, hookworm egg protein
Manuscript Classifications	
Corresponding Author	Budi Santosa Universitas Muhammadiyah Semarang Semarang, Central Java, INDONESIA
First Author	Budi Santosa
Order of Author	Arista Kurniasari Budi Fristiani Edi Dharmana Fitriani Nur Damayanti Heru Santoso Wahito Nugroho
Abstract	ABSTRACT Hookworm infestation is still high and requires practical laboratory diagnosis with high sensitivity and specificity. Meanwhile, there are several limitations associated with the existing method, hence, a new method is essentially needed. Furthermore, the principle of immunological reactions needs to be developed by identifying the extent of hookworm eggs suspension immune responses. The balb/c mouse is among the most widely used inbred models used in biomedical research, and is particularly utilized in immunology and infectious disease research. Therefore, this study aims to determine whether the protein concentration of hookworm eggs stimulates antibodies formation (proteins) in the serum of Balb/C mice. This is an experimental study with a Post-test only control design approach. Egg protein was isolated by removing the contents using a mini drill to immunize Balb/C mice, while the antibody response was observed by spectrophotometer and agglutination methods. The Chi-square and Posthoc statistical tests showed a significance $p \leq 0,001$ indicating a relationship between hookworm egg protein and agglutination results. The higher the antibody level, the more visible the agglutination and vice versa. These results are expected to form a basis for developing more practical and efficient diagnostic methods based on antigen-antibody reactions.
Opposed Reviewers	

IMMUNE RESPONSE (SERUM GLOBULIN) IN BALB/C MICE AFTER HOOKWORM EGG PROTEIN IMMUNIZATION AS THE INITIAL STAGE OF DEVELOPING LABORATORY DIAGNOSTICS : AN IN VIVO APPROACH

Budi Santosa*, Arista Kurniasari Budi Fristiani*, Edi Dharmana**, Fitriani Nur Damayanti*, Heru Santoso Wahito Nugroho***

*Master program of medical laboratory science Universitas Muhammadiyah Semarang

**Faculty of Medicine Universitas Diponegoro Semarang

*** Public Health, Politeknik Kementrian Kesehatan Surabaya

Abstract

Hookworm infestation is still high and requires practical laboratory diagnosis with high sensitivity and specificity. Meanwhile, there are several limitations associated with the existing method, hence, a new method is essentially needed. Furthermore, the principle of immunological reactions needs to be developed by identifying the extent of hookworm eggs suspension immune responses. The BALB/c mouse is among the most widely used inbred models used in biomedical research, and is particularly utilized in immunology and infectious disease research. Therefore, this study aims to determine whether the protein concentration of hookworm eggs stimulates antibodies formation (proteins) in the serum of Balb/C mice. This is an experimental study with a Post-test only control design approach. Egg protein was isolated by removing the contents using a mini drill to immunize Balb/C mice, while the antibody response was observed by spectrophotometer and agglutination methods. The Chi-square and Posthoc statistical tests showed a significance $p \leq 0,001$ indicating a relationship between hookworm egg protein and agglutination results. The higher the antibody level, the more visible the agglutination and vice versa. These results are expected to form a basis for developing more practical and efficient diagnostic methods based on antigen-antibody reactions.

Keywords: hookworm, mouse serum protein, hookworm egg protein.

Introduction

Worm infestation is one of the most common diseases that spread and infect people worldwide. In 2015, the World Health Organization (WHO) stated that 24% of the world's population suffers from worms. Sub-Saharan Africa, America, China, and East Asia have the largest incidence rates. Meanwhile, one of the causes of high worm infestation is the low quality of environmental sanitation (1), which leads to malnutrition, physical, mental, cognitive growth, and intellectual decline in children, as well as decreased immunity, disability, and death (2)(3).

Soil-transmitted helminth (STH) is a group of soil-borne worms which consist of four species, namely *Ascaris lumbricoides*, *Trichuris trichiura*, and hookworms (*Necator americanus* and *Ancylostoma duodenale*) (4). The prevalence of this STH group is still high ranging from 45%-65% in Indonesia. The most prevalent is hookworm with an incidence of 32% in 1000 population (5)(6).

Helminthiasis diagnosis is established by laboratory examinations using conventional methods, including direct, indirect, and microscopic (7). In the direct method, reagents such as eosin, Lugol, and NaCl are used to observe the worm eggs clearly and properly. Meanwhile, in the indirect method, the duration of flotation and sedimentation is often used as a variable to obtain a false positive/negative result. Moreover, expertise is required in identifying worm eggs by laboratory personnel. The limitations are minimized by using an easy

examination method with high sensitivity, specificity, as well as positive and negative predictive value (8).

Method development needs to be carried out using the principle of antigen and antibody reactions. This method requires antibodies as reagents at an early stage to establish a diagnosis. Meanwhile, hookworm eggs contain immunogenic proteins with similar structures at all stages. Antibodies are obtained by immunizing worm egg protein in experimental animals (9). The BALB/c mouse is among the most widely used inbred models used in biomedical research, and is particularly utilized in immunology and infectious disease research. Their ability to produce plasma cell tumors within soft tissue is important in the production of monoclonal antibodies (mAbs). Furthermore, Balb/C mice showed the best response to polyclonal antibodies formation compared to other types (10)(11), the higher the antigenic level, the stronger the response (12)(13). The content of antibodies is observed by reacting the serum of immunized mice with hookworm egg protein using agglutination and spectrophotometry methods. Agglutination is one of the immunogenicity test methods that induces an antigen-antibody reaction in the particles form (14). Meanwhile, spectrophotometry was used to measure the concentration of immunoglobulin in the serum of Balb/C mice (15). Immunoglobulins (IgG, IgM, IgA, IgE, IgD) are present in serum Gamma globulin which is one of protein fractions (16)(17). Furthermore, globulin is a component of serum protein that indicates antibody expression (18)(19). The antibody

concentration in the serum is important to determine the extent of hookworm egg protein immune response for the development of laboratory test methods to establish worm infestations.

Materials And Methods

This is an experimental study with *Post-test only controls design* approach, consisting of 4 groups, namely 1 negative control, and 3 test groups (P1, P2, P3) each using 5 experimental animals. The outputs examined include hookworm egg protein and globulin levels from the Balb/C mice serum.

The stages are as follows:

1. The Making of Hookworm Egg Protein

Fecal samples that were only positive for hookworm eggs were screened using the microscopic method. Meanwhile, worm eggs isolation was carried out by modified flotation and sedimentation methods. Positive samples were separated using the saturated salt flotation method because the number of samples required was large. This process was carried out using a separating funnel to easily remove dirt deposits. The supernatant was collected for repeated centrifugation with physiological NaCl solution and filtered using a gauze with a pore diameter of 300 mesh.

The hookworm egg protein components were obtained by crushing the eggshells in a mixer using a mini drill for 10 minutes. The mixing was controlled microscopically to observe the egg grains, meanwhile, residual eggs when

found were destroyed repeatedly. Furthermore, the sample was examined for protein content with a spectrophotometer to determine the absorbance and protein concentration.

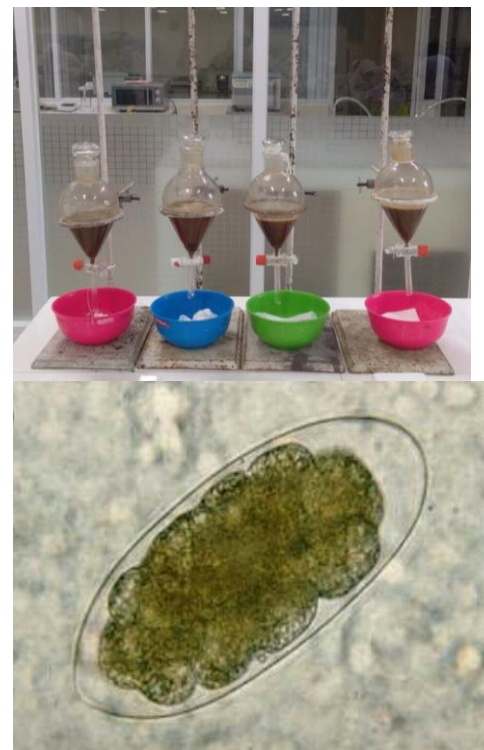


Figure 1. Modified Methods of Flotation, Sedimentation, and Microscopic Examination of Stool Samples

2. The Examination of Hookworm Egg Protein Levels

Hookworm egg protein suspensions were prepared in concentrations of 5%, 10%, and 15% while the protein content was measured using the spectrophotometer method by making a standard curve from a protein standard solution, measuring the absorbance of samples at each concentration, as well as a negative control of the stool suspension, and input data on a standard curve. The X-axis was protein concentration while Y-axis was the absorbance, hence, the formula for the

equation of the line was obtained while the protein content was measured by entering the absorbance value.

3. Selection of Experimental Animals

The experimental animals selected were female Balb/C mice aged 6-8 weeks weighing about 18-20 g because balb mice have a very good response to immunization, balb strain mice are more able to survive twice as strong as the CBA/CBA2 strain and C3H/HeJ. The immune status of the immunized individual can also determine the outcome of the immunization procedure. The age of mice used by young adults is good for the production of polyclonal antibodies (pAb). Traditionally, female animals have been used most often in pAb production. Females are generally more docile for handling purposes, and less aggressive in social interactions, and can therefore be grouped more successfully. While there is some evidence that androgens can slightly dampen antibody responses, there is no major scientific reason not to use male animals.

4. The Protein Immunization in Experimental Animals

Balb/C mice were injected with hookworm egg protein in treatments 1st (P1), 2nd (P2), 3rd (P3) with concentrations of P1 (5%), P2 (10%), and (15%). Meanwhile, the control was injected with negative stool samples. *Boosters* were carried out on the 7th, 14th, and 21st while on the 30th day blood harvest was carried out. Furthermore, this study used variations in the concentration of injection based on the recommended dose for mice

which is 5 ug per 100 ul injection. However, because the antigen used is in liquid form, the concentration was made directly into 5% and an additional variation of 10% and 15%.

5. Blood collection

Mice blood samples were obtained from the conjunctiva after 35 days using a capillary tube. It was drawn with minimum stress for mice, i.e. by administering anesthesia before sampling to reduce stress and pain, by veterinary staff. Furthermore, blood collection was carried out under warm conditions to ensure smooth blood flow, no sudden noise which might trigger stress, and the sampling site was kept clean to avoid blood contamination. To obtain the antibody, the sample was placed in a plain vacutainer tube, frozen, and then centrifuged at 10,000 rpm for 5 minutes. The supernatant formed was collected and placed into a sterile tube and then stored at -20°C.

6. The Spectrophotometric Test

The protein globulin level was obtained by calculating the difference between total protein and serum albumin which was read by the photometer method. Globulins make up 40% of the total protein, the remainder consisting of 60% albumin.

Globulin Formula (g/dl): Total Protein – Albumin

Table 1. Total protein procedure:

	Blank	Standard	Sample
Aquadest	20 ul	-	-
Lar Standard	-	20 ul	-
Sample	-	-	20 ul
Monoreagent (4R1:1R2)	1000 ul	1000 ul	1001

Table 2. Albumin procedure:

	Blank	Standard	Sample
Aquadest	10 ul	-	-
Lar Standard	-	10 ul	-
Sample	-	-	10 ul
Reagent	1000 ul	1000 ul	1000 ul

Each solution mixture was homogenized and then incubated at 37 degrees Celsius for 10 minutes, the sample absorbance was read to the blank at a wavelength of 546nm.

7. Agglutination Test

Mice serum from the control, as well as treatments 1, 2, and 3, were used as samples to check for the presence of antibody which are formed by the principle of agglutination. An antigen in this test is the hookworm egg protein concentration, meanwhile, the volume of each stage is 20 ul of both mice serum and antigen. Agglutination appeared in the form of grains on the slide and was observed for 2 minutes.

Ethical Clearance

This study was conducted after obtaining *ethical clearance* from the ethics committee of FKM UNIMUS Semarang No.423/KEPK-FKM/UNIMUS/2020. The Head of the Clinical Pathology Laboratory, Muhammadiyah

Semarang University, approved this study after receiving notification of *ethical clearance* result

RESULTS

Analysis of worm egg protein levels

The pure fecal suspension samples were examined for the number of hookworm eggs to predict the density. In each 20 microliters, there were 3-4 eggs/ field of view with a magnification of 100 times. This produced an image indicating that each ml of the pure sample contains 1000 hookworm eggs.

Examination of hookworm egg protein levels using the spectrophotometer method obtained the following data:

Table 3. Hookworm egg protein level based on the concentration (%)

Hookworm Egg Protein Concentration	Protein content (ug/ul)
Negative stool suspension	0,420
5%	39,305
10%	58,694
15%	72,679

The protein content of hookworm eggs is directly proportional to the concentration, hence, the higher the concentration, the higher the protein content. In the negative stool suspension, almost no protein content was found.

Analysis of serum Globulin protein levels in mice

The examination of globulin protein levels using a spectrophotometric device on 5 mice serum per each treatment group after 35 days of immunization using worm egg protein produced the following results:

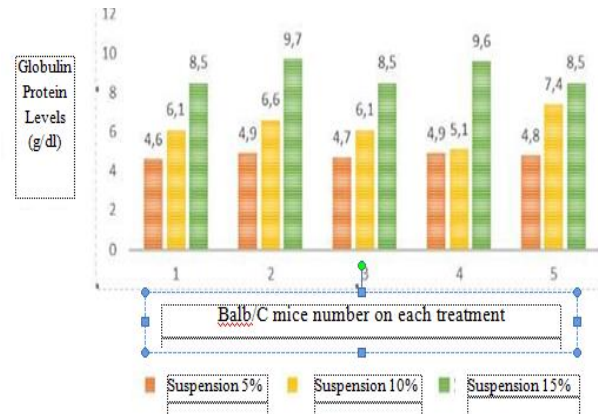


Figure 4. Graph of Serum Globulin Protein Levels in Mice After Immunization with Hookworm Egg Protein.

Based on Figure 2, the highest and lowest globulin protein content was found in the 15% hookworm egg protein suspension. The protein concentration is directly proportional to globulin

protein levels in the serum of Balb/C mice.

The antibody concentration in ug/ul based on the injection of antigen (hookworm egg protein content) is illustrated in the following table:

Table 5. Antibody concentration of egg serum Balb/C mice after immunization of antigen variation by Spectrophotometric method.

Stool Suspension Concentration	Hookworm egg protein content/Antigen (ug/ul)	Serum Protein Levels in Balb/C mice after immunization)/Antibodies (ug/ul)
5%	39.305	43.167
10%	58.694	68.802
15%	72.679	110.713
50%	100.086	-
100%	167.090	-

Based on the table, the higher the dose given, the higher the antibody expression produced.

Table 3. Balb/C Mice serum agglutination test results with hookworm egg protein concentration

Hookworm Egg Protein Concentration (Ag) (%)	Balb/C Mice Serum after immunization with hookworm egg protein					
	5%		10%		15%	
	Agl	#Agl	Agl	#Agl	Agl	#Agl
5% (39,305 ug/ul)	5	0	5	0	5	0
10% (58.694 ug/ul)	5	0	5	0	5	0
15% (72.679 ug/ul)	0	5	0	5	5	0
50% (100.086 ug/ul)	0	5	0	5	5	0
100% (167.090 ug/ul)	0	5	0	5	2	3

Information: Agl: the amount of agglutination. #Agl: the amount of agglutination does not occur

Antigen and antibody which reacted with the same concentration all formed agglutination. The serum of Balb/C mice was also reacted with antigen concentrations of 50% and 100%. The result showed that when the antibody

concentration was lower than the antigen, agglutination was faint, negative, or totally absent.

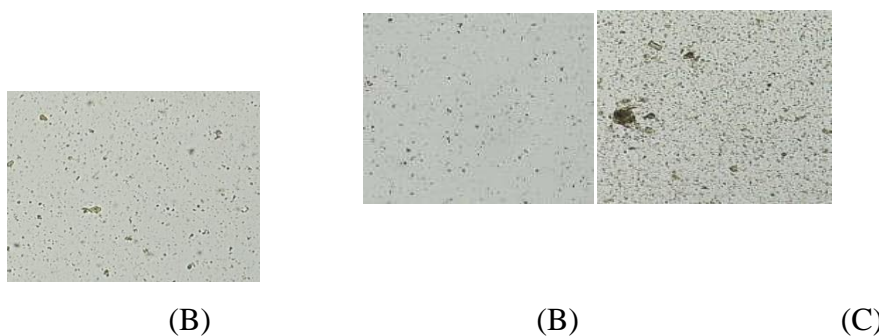


Figure 2. Agglutination Test Results of Mice Serum and Hookworm Egg Protein where A and B showed negative results while C showed positive results.

Table 6. Statistical test results of agglutination of mice serum proteins to hookworm egg protein concentration

	Value	d f	(2- side d)
Pearson Chi-Square	69.871 ^a	1 4	.000
Likelihood Ratio	92.376	1 4	.000
Linear-by-Linear Association	.108	1	.742
N of Valid Cases	75		

Based on the Chi-Square statistical test, a p-value $\leq 0,001$ was obtained, which indicates that there was a significant difference in the agglutination results of mice serum with 5%, 10%, and 15% fecal suspension. To determine

the differences, the Posthoc test was carried out as follows:

Table 7. Posthoc statistical test results of serum agglutination of Balb/C Mice to hookworm egg protein concentration

Multiple Comparisons						
Globulin Bonferro ni Level						
(I) Stool Suspension	(J) Stool Suspension	Mean Difference (I-J)	Std. Error	Sig.	95% Confidence Interval	
					Lower Bound	Upper Bound
Stool Suspension 5%	Stool Suspension 10%	-.480 [*]	.3861	.007	-2.553	-.407
	Stool Suspension 15%	-4.180 [*]	.3861	.001	-5.253	-3.107
Stool Suspension 10%	Stool Suspension 5%	.480 [*]	.3861	.007	.407	2.553
	Stool Suspension 15%	-2.700 [*]	.3861	.001	-3.773	-1.627
Stool Suspension 15%	Stool Suspension 5%	4.180 [*]	.3861	.001	3.107	5.253
	Stool Suspension 10%	2.700 [*]	.3861	.001	1.627	3.773

*. The mean difference is significant at the 0.05 level.

Based on the Posthoc test, the p-value between each group was below 0.05, this indicates that there were significant differences in concentrations of 5%, 10%, and 15% with serum antibody levels in Balb/C mice.

The results showed that hookworm egg suspension contains numerous proteins and the levels increase according to the percentage of the suspension. Hookworm egg suspension immunized in Balb/C mice also indicated an increase in globulin levels. This was further supported by the agglutination result which showed that there were significant differences in concentrations of 5%, 10%, and 15% with serum antibody levels in Balb/C mice.

The ability of an immunogen to stimulate antibody formation depends on the type, mode of entry, the receiving individual, and the sensitivity of the method used for detection (20)(21), the greater the immunogenic protein the better. This is evident from the increase in protein as one of the dominant components in antibodies. Furthermore, the results showed that each concentration of hookworm egg protein stimulates immune response formation characterized by increased levels of protein globulins in the experimental animals' serum. This increase activates components of the body's defenses such as lymphoid organs such as the spleen, lymph nodes, and lymphoid tissue associated with the intestines, including the tonsils where various antibodies are produced by stimulating B lymphocytes (plasma cells) (22) (23).

The modulating effect of worm infection on the immune system occurs due to changes in

the balance of T helper1/T helper2 (Th1/Th2) to Th2 cells (Th2 polarized) (24). Acute infection with intestinal worms stimulates the host immune response known as *Th2 response* (25). This immune response polarization is characterized by an increase in Th2-specific *cytokines* such as *interleukin-4* (IL-4), *interleukin-5* (IL-5), *interleukin-13* (IL-13), as well as immunoglobulin E (IgE) (26)(27)(28) as demonstrated in the levels of the Gammaglobulin fraction in the total protein globulin. The results showed that the higher the concentration of hookworm egg protein, the higher the globulin response.

High levels of globulins are used as material to develop immune response reactions for a more practical and efficient serological-based hookworm egg examination method.

The presence of hookworm egg protein is an early indication used as the most potent immunogen component in the macromolecular proteins form, such as polysaccharides, or other synthetic polymers including *polyvinylpyrrolidone* (PVP). Meanwhile, the configuration of the antigen-antibody molecule only produces antibodies that are specific to one type of antigen (29)(30). The greater the immunogenic protein the better, meanwhile, protein increases in an organism as one of the dominant components in antibodies (31).

Agglutination test is one of the methods used to prove the presence of antigen and antibody reactions. One of the methods used is direct agglutination (32), which requires that the antigen and antibody react directly, with the antigen in the form of a particle or cell, hence,

when it reacts with a specific antibody, clumps are formed (33).

CONCLUSION

The statistical tests showed that variations in the protein concentration of hookworm eggs produced antibodies indicated by the increase in serum protein of Balb/C mice, the occurrence of agglutination reactions, and the difference in agglutination results. These results are applicable as a reference for further studies to develop a new simple method for detecting hookworm using serological methods.

REFERENCES

1. Oswald WE, Stewart AEP, Kramer MR, Endeshaw T, Zerihun M, Melak B, et al. Association of community sanitation usage with soil-transmitted helminth infections among school-aged children in Amhara Region, Ethiopia. *Parasites and Vectors*. 2017;10(1):1–13.
2. Bharti B, Bharti S, Khurana S. Worm Infestation: Diagnosis, Treatment, and Prevention. *Indian J Pediatr* [Internet]. 2018;85(11):1017–24. Available from: <https://pubmed.ncbi.nlm.nih.gov/29127616/>
3. Kabore A, Ibikounle M, Tougoue JJ, Mupoyi S, Ndombe M, Shannon S, et al. Initiating NTD programs targeting schistosomiasis and soil-transmitted helminthiasis in two provinces of the Democratic Republic of the Congo: Establishment of baseline prevalence for mass drug administration. *Acta Trop* [Internet]. 2017;166:177–85. Available from: <https://pubmed.ncbi.nlm.nih.gov/27888125/>
4. Inocencio da Luz R, Linsuke S, Lutumba P, Hasker E, Boelaert M. Assessment of schistosomiasis and soil-transmitted helminths prevalence in school-aged children and opportunities for integration of control in local health services in Kwilu Province, the Democratic Republic of the Congo. *Trop Med Int Heal*. 2017;22(11):1442–50.
5. Dunn JC, Turner HC, Tun A, Anderson RM. Epidemiological surveys of, and research on, soil-transmitted helminths in Southeast Asia: A systematic review. *Parasites and Vectors* [Internet]. 2016;9(1):1–13. Available from: <http://dx.doi.org/10.1186/s13071-016-1310-2>
6. Rusjdi SR. Tinjauan Pustaka Infeksi Cacing dan Alergi. *J Kesehat Andalas*. 2015;4(1):322–5.
7. Khurana S, Sethi S. Laboratory diagnosis of soil-transmitted helminthiasis. *Trop Parasitol* [Internet]. 2017;7(2):86–91. Available from: <https://pubmed.ncbi.nlm.nih.gov/29114485/>
8. Ngwese MM, Ngwese MM, Manouana GP, Manouana GP, Moure PAN, Ramharter M, et al. Diagnostic techniques of soil-transmitted helminths: Impact on control measures. *Trop Med Infect Dis*. 2020;5(2):1–17.
9. Kato M, Yan H, Tsuji NM, Chiba T, Hanyu Y. A method for inducing antigen-specific IgG production by in vitro immunization. *J Immunol Methods* [Internet]. 2012;386(1–2):60–9. Available from: <https://pubmed.ncbi.nlm.nih.gov/22974834/>
10. Tang S, Liu Z, Li R, Chen Y, Zhao L, Shen H, et al. Preparation and identification of the polyclonal antibody against ATRX-C 2193-2492. *Xi Bao Yu Fen Zi Mian Yi Xue Za Zhi* [Internet]. 2017;33(4):536–9. Available from: <https://pubmed.ncbi.nlm.nih.gov/28395727/>
11. Malaei F, Rasaei MJ, Paknejad M, Latifi AM, Rahbarizadeh F. Production and Characterization of Monoclonal and Polyclonal Antibodies Against Truncated Recombinant Dickkopf-1 as a Candidate Biomarker. *Monoclon Antib Immunodiagn Immunother* [Internet]. 2018;37(6):257–64. Available from: <https://pubmed.ncbi.nlm.nih.gov/30592704/>
12. Francis JN, Thaburet J-F, Bonnet D, Sizer PJ, Brown CB, Georges B. Increasing

- cellular immunogenicity to peptide-based vaccine candidates using a fluorocarbon antigen delivery system. *Vaccine* [Internet]. 2015;33(8):1071–6. Available from: <https://pubmed.ncbi.nlm.nih.gov/25573036/>
13. Rocha MCV da, Barés ME, Braga MCB. Quantification of viable helminth eggs in samples of sewage sludge. *Water Res* [Internet]. 2016;103:245–55. Available from: <https://pubmed.ncbi.nlm.nih.gov/27470467/>
 14. Roche AM, Richard AL, Rahkola JT, Janoff EN, Weiser JN. Antibody blocks the acquisition of bacterial colonization through agglutination. *Mucosal Immunol* [Internet]. 2015;8(1):176–85. Available from: <https://pubmed.ncbi.nlm.nih.gov/24962092/>
 15. Wu D, Piszczek G. Rapid Determination of Antibody-Antigen Affinity by Mass Photometry. *J Vis Exp* [Internet]. 2021;168:10.3791/61784. Available from: <https://pubmed.ncbi.nlm.nih.gov/33616097/>
 16. McCormack PL. Immune globulin (human) 10 % liquid: a review of its use in primary immunodeficiency disorders. *BioDrugs* [Internet]. 2013;27(4):393–400. Available from: <https://pubmed.ncbi.nlm.nih.gov/23703447/>
 17. Vaillant AAJ, Jamal Z, Ramphul K. Immunoglobulin [Internet]. In: *StatPearls* [Internet]. Treasure Island (FL); 2021. StatPearls Publishing. Available from: <https://www.ncbi.nlm.nih.gov/books/NBK513460/>
 18. Jolles S, Borrell R, Zouwail S, Heaps A, Sharp H, Moody M, et al. Calculated globulin (CG) as a screening test for antibody deficiency. *Clin Exp Immunol* [Internet]. 2014;177(3):671–8. Available from: <https://pubmed.ncbi.nlm.nih.gov/24784320/>
 19. He J, Pan H, Liang W, Xiao D, Chen X, Guo M, et al. Prognostic effect of albumin-to-globulin ratio in patients with solid tumors: A systematic review and meta-analysis. *J Cancer* [Internet]. 2017;8(19):4002–10. Available from: <https://www.ncbi.nlm.nih.gov/pmc/articles/PMC5706002/>
 20. Kwong PD. What are the most powerful immunogen design vaccine strategies?: A structural biologist’s perspective. *Cold Spring Harb Perspect Biol* [Internet]. 2017;9(11):1–7. Available from: <https://www.ncbi.nlm.nih.gov/pmc/articles/PMC5540812/>
 21. Harding FA, Stickler MM, Razo J, DuBridge RB. The immunogenicity of humanized and fully human antibodies: Residual immunogenicity resides in the CDR regions. *MAbs* [Internet]. 2010;2(3):256–65. Available from: <https://www.ncbi.nlm.nih.gov/pmc/articles/PMC2881252/>
 22. Brown K, Sacks SH, Wong W. Tertiary lymphoid organs in renal allografts can be associated with donor-specific tolerance rather than rejection. *Eur J Immunol* [Internet]. 2011;41(1):89–96. Available from: <https://pubmed.ncbi.nlm.nih.gov/21182080/>
 23. Manuscript A. Overview of the immune response. *J Allergy Clin Immunol* [Internet]. 2010;125(2): S345. Available from: <https://www.ncbi.nlm.nih.gov/pmc/articles/PMC2923430/>
 24. Anuradha R, Munisankar S, Dolla C, Kumaran P, Nutman TB, Babu S. Parasite Antigen-Specific Regulation of Th1, Th2, and Th17 Responses in *Strongyloides stercoralis* Infection. *J Immunol* [Internet]. 2015;195(5):2241–50. Available from: <https://pubmed.ncbi.nlm.nih.gov/26202988/>
 25. Nair MG, Herbert DR. Immune polarization by hookworms: taking cues from T helper type 2, type 2 innate lymphoid cells and alternatively activated macrophages. *Immunol* [Internet]. 2016;148(2):115–24. Available from: <https://pubmed.ncbi.nlm.nih.gov/26928141/>
 26. Ahmed N, French T, Rausch S, Kühl A, Hemminger K, Dunay IR, et al. Toxoplasma Co-infection Prevents Th2 Differentiation and Leads to a Helminth-

- Specific Th1 Response. 2017;7(July):1–12. Available from: <https://pubmed.ncbi.nlm.nih.gov/28791259/>
27. Bao K, Reinhardt RL. The differential expression of IL-4 and IL-13 and its impact on type-2 Immunity. *Cytokine* [Internet]. 2015;75(1):25–37. Available from: <https://www.ncbi.nlm.nih.gov/pmc/articles/PMC5118948/>
28. Henry EK, Inclan-rico JM, Siracusa MC, State R. Type 2 cytokine responses: regulating immunity to helminth parasites and allergic inflammation. *Curr Pharmacol Rep* [Internet]. 2017;3(6):346–59. Available from: <https://www.ncbi.nlm.nih.gov/pmc/articles/PMC5794032/>
29. Armstrong B. Antigen-antibody reactions. *ISBT Sci Ser* [Internet]. 2020;3(15):68–80. Available from: <https://onlinelibrary.wiley.com/doi/epdf/10.1111/voxs.12590>
30. Id TEG, Cepon-robins TJ, Liebert MA, Urlacher SS, Schrock JM, Harrington CJ, et al. PLOS ONE Market integration and soil-transmitted helminth infection among the Shuar of Amazonian Ecuador. *PLoS One* [Internet]. 2020;15:1–24. Available from: <http://dx.doi.org/10.1371/journal.pone.0236924>
31. Arur S, Schedl T. Generation and purification of highly-specific antibodies for detecting post-translationally modified proteins in vivo. *Nat Protoc* [Internet]. 2014;9(2):375–95. Available from: <https://pubmed.ncbi.nlm.nih.gov/24457330/>
32. Yeow N, Tabor RF, Garnier G. Direct measurement of IgM-Antigen interaction energy on individual red blood cells. *Colloids Surf B Biointerfaces* [Internet]. 2017;155:373–8. Available from: <https://pubmed.ncbi.nlm.nih.gov/28454066/>
33. Han S, Wang G, Xu N, Liu H. Quantitative Assessment of the Effects of Oxidants on Antigen-Antibody Binding In Vitro. *Oxid Med Cell Longev* [Internet]. 2016;2016(10):10–5. Available from: <https://pubmed.ncbi.nlm.nih.gov/2731382>

PRODUCTION

9642 / Santosa et al. / Immune Response (Serum Globulin) in BALB/c Mice after Hookworm Egg Protein Immunization as the Initial Stage of Developing Laboratory Diagnostics

Workflow: Publication

Submission Review Copyediting Production

Production Discussions

Name	From	Last Reply	Replies	Closed
[OAMJMS] Proofreading Request (Author)	tfildishevska	budisantosa	2	<input type="checkbox"/>
[OAMJMS] Your Article was Published	Ivos	-	0	<input type="checkbox"/>

6:01 17/10/2022

mail.google.com/mail/u/1/#search/macedonia/FMfcgzGpBFGWZbzIbfvdhnlVXHkcnWQ

Active

[OAMJMS] Editor Decision External Inbox

Teodora Fildishevska via SFS - Journals (Scientific Foundation SPIROSKI - Journals), Skopje, Republic of Macedonia -noreply@publicknowledgeproject.org Thu, May 26, 3:19 PM

Budi Santosa, Arista Kumiasari Budi Fristiani, Edi Dharmana, Fitriani Damayanti (Author):

The editing of your submission, "Immune Response (Serum Globulin) in Balb/C Mice After Hookworm Egg Protein Immunization As The Initial Stage Of Developing Laboratory Diagnostics." Manuscript ID = OJS9642 is complete. We are now sending it to production.

Submission URL: <https://oamjms.eu/index.php/mjms/authorDashboard/submission/9642>

Reply Reply all Forward

6:02 17/10/2022

(10) WhatsApp x Santosa et al. | Immune Respons... x [OAMJMS] Editor Decision - budi x +

mail.google.com/mail/u/1/#search/macedonia/FMfcgzGpGBFGWZbzIbfvdhnlVXHkcnWQ

Gmail

Compose

Mail

Chat

Spaces

Meet

Inbox 4,566

Starred

Snoozed

Sent

Drafts 72

More

Labels +

macedonia

[OAMJMS] Editor Decision External Inbox x

7 of 15

Teodora Fildishevska via SFS - Journals (Scientific Foundation SPIROSKI - Journals), Skopje, Republic of Macedonia <noreply@publicknowledgeproject.org> to me, Arista, Edi, Fitriani Thu, May 26, 3:19 PM

Budi Santosa, Arista Kurniasari Budi Fristiani, Edi Dhamana, Fitriani Damayanti (Author):

The editing of your submission, "Immune Response (Serum Globulin) in Balb/C Mice After Hookworm Egg Protein Immunization As The Initial Stage Of Developing Laboratory Diagnostics," Manuscript ID = OJS9842 is complete. We are now sending it to production.

Submission URL: <https://oamjms.eu/index.php/mims/author/Dashboard/submission/9842>

Reply Reply all Forward

6:02 17/10/2022



Immune Response (Serum Globulin) in BALB/c Mice after Hookworm Egg Protein Immunization as the Initial Stage of Developing Laboratory Diagnostics: An *In Vivo* Approach

Budi Santosa^{1*}, Arista Kurniasari Budi Fristiani¹, Edi Dharmana², Fitriani Nur Damayanti¹, Heru Santoso Wahito Nugroho³

AQ2 ¹Medical Laboratory Science, Universitas Muhammadiyah, Semarang, Central Java, Indonesia; ²Department of ???, Faculty of
AQ3 Medicine, Universitas Diponegoro, Semarang, Indonesia; ³Department of ???, Public Health, Politeknik Kementrian Kesehatan
Surabaya

Abstract

Edited by: <https://publons.com/researcher/391987/mirko-spiroski>

Citation: Santosa B, Fristiani AKB, Dharmana E, Damayanti FN, Nugroho HSW. Immune Response (Serum Globulin) in BALB/c Mice after Hookworm Egg Protein Immunization as the Initial Stage of Developing Laboratory Diagnostics: An *In Vivo* Approach. Open Access Maced J Med Sci. 2022 Feb 05; 10(A):1-6.
<https://doi.org/10.3889/oamjms.2022.9642>

Keywords: Hookworm; Mouse serum protein; Hookworm egg protein

*Correspondence: Budi Santosa, Medical Laboratory Science, Universitas Muhammadiyah, Semarang, Central Java, Indonesia. E-mail: ???

Received: ???

Revised: ???

Accepted: ???

Copyright: © 2022 Budi Santosa, Arista Kurniasari Budi Fristiani, Edi Dharmana, Fitriani Nur Damayanti, Heru Santoso Wahito Nugroho

Funding: This research did not receive any financial support

Competing Interests: The authors have declared that no competing interests exist

Open Access: This is an open-access article distributed under the terms of the Creative Commons Attribution-NonCommercial 4.0 International License (CC BY-NC 4.0)

Hookworm infestation is still high and requires practical laboratory diagnosis with high sensitivity and specificity. Meanwhile, there are several limitations associated with the existing method; hence, a new method is essentially needed. Furthermore, the principle of immunological reactions needs to be developed by identifying the extent of hookworm eggs suspension immune responses. The BALB/c mouse is among the most widely used inbred models used in biomedical research and is particularly utilized in immunology and infectious disease research. Therefore, this study aims to determine whether the protein concentration of hookworm eggs stimulates antibodies formation (proteins) in the serum of BALB/c mice. This is an experimental study with a post-test only control design approach. Egg protein was isolated by removing the contents using a mini drill to immunize BALB/c mice, while the antibody response was observed by spectrophotometer and agglutination methods. The Chi-square and *Post hoc* statistical tests showed a significance $p \leq 0.001$ indicating a relationship between hookworm egg protein and agglutination results. The higher the antibody level, the more visible the agglutination and *vice versa*. These results are expected to form a basis for developing more practical and efficient diagnostic methods based on antigen-antibody reactions.

AQ2
AQ6
AQ7

Introduction

Worm infestation is one of the most common diseases that spread and infect people worldwide. In 2015, the World Health Organization (WHO) stated that 24% of the world's population suffers from worms. Sub-Saharan Africa, America, China, and East Asia have the largest incidence rates. Meanwhile, one of the causes of high worm infestation is the low quality of environmental sanitation [1], which leads to malnutrition, physical, mental, cognitive growth, and intellectual decline in children, as well as decreased immunity, disability, and death [2], [3].

Soil-transmitted helminth (STH) is a group of soil-borne worms which consist of four species, namely *Ascaris lumbricoides*, *Trichuris trichiura*, and hookworms (*Necator americanus* and *Ancylostoma duodenale*) [4]. The prevalence of this STH group is still high ranging from 45–65% in Indonesia. The most prevalent is hookworm with an incidence of 32% in 1000 population [5], [6].

Helminthiasis diagnosis is established by laboratory examinations using conventional methods, including direct, indirect, and microscopic [7]. In the direct method, reagents such as eosin, Lugol, and NaCl are used to observe the worm eggs clearly and properly. Meanwhile, in the indirect method, the duration of flotation and sedimentation is often used as a variable to obtain a false positive/negative result. Moreover, expertise is required in identifying worm eggs by laboratory personnel. The limitations are minimized using an easy examination method with high sensitivity, specificity, as well as positive and negative predictive value [8].

Method development needs to be carried out using the principle of antigen and antibody reactions. This method requires antibodies as reagents at an early stage to establish a diagnosis. Meanwhile, hookworm eggs contain immunogenic proteins with similar structures at all stages. Antibodies are obtained by immunizing worm egg protein in experimental animals [9]. The BALB/c mouse is among the most widely used inbred models used in biomedical research

and is particularly utilized in immunology and infectious disease research. Their ability to produce plasma cell tumors within soft tissue is important in the production of monoclonal antibodies (mAbs). Furthermore, BALB/c mice showed the best response to polyclonal antibodies formation compared to other types [10] [11], the higher the antigenic level, the stronger the response [12] [13]. The content of antibodies is observed by reacting the serum of immunized mice with hookworm egg protein using agglutination and spectrophotometry methods. Agglutination is one of the immunogenicity test methods that induce an antigen-antibody reaction in the particles form [14]. Meanwhile, spectrophotometry was used to measure the concentration of immunoglobulin in the serum of BALB/c mice [15]. Immunoglobulins (IgG, IgM, IgA, IgE, and IgD) are present in serum gamma globulin which is one of protein fractions [16], [17]. Furthermore, globulin is a component of serum protein that indicates antibody expression [18], [19]. The antibody concentration in the serum is important to determine the extent of hookworm egg protein immune response for the development of laboratory test methods to establish worm infestations.

Materials and Methods

This is an experimental study with *post-test only controls design* approach, consisting of 4 groups, namely, 1 negative control and 3 test groups (P1, P2, and P3) each using five experimental animals. The outputs examined include hookworm egg protein and globulin levels from the BALB/c mice serum.

The stages are as follows:

The making of hookworm egg protein

Fecal samples that were only positive for hookworm eggs were screened using the microscopic method. Meanwhile, worm eggs isolation was carried out by modified flotation and sedimentation methods. Positive samples were separated using the saturated salt flotation method, because the number of samples required was large. This process was carried out using a separating funnel to easily remove dirt deposits. The supernatant was collected for repeated centrifugation with physiological NaCl solution and filtered using a gauze with a pore diameter of 300 mesh.

The hookworm egg protein components were obtained by crushing the eggshells in a mixer using a mini drill for 10 min. The mixing was controlled microscopically to observe the egg grains, meanwhile, residual eggs when found were destroyed repeatedly. Furthermore, the sample was examined for protein content with a spectrophotometer to determine the absorbance and protein concentration (Figure 1).

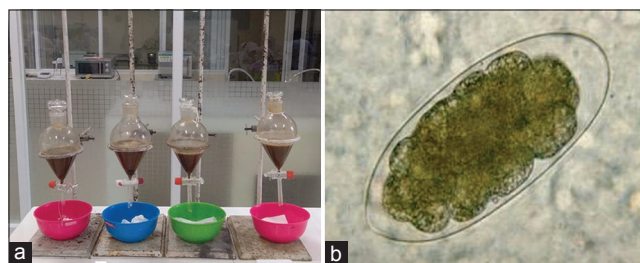


Figure 1: Modified methods of flotation, sedimentation, and microscopic examination of stool samples

The examination of hookworm egg protein levels

Hookworm egg protein suspensions were prepared in concentrations of 5%, 10%, and 15%, while the protein content was measured using the spectrophotometer method by making a standard curve from a protein standard solution, measuring the absorbance of samples at each concentration, as well as a negative control of the stool suspension, and input data on a standard curve. The X-axis was protein concentration while Y-axis was the absorbance; hence, the formula for the equation of the line was obtained, while the protein content was measured by entering the absorbance value.

Selection of experimental animals

The experimental animals selected were female BALB/c mice aged 6–8 weeks weighing about 18–20 g, because BALB/c mice have a very good response to immunization, BALB strain mice are more able to survive twice as strong as the CBA/CBA2 strain and C3H/HeJ. The immune status of the immunized individual can also determine the outcome of the immunization procedure. The age of mice used by young adults is good for the production of polyclonal antibodies (pAb). Conventionally, female animals have been used most often in pAb production. Females are generally more docile for handling purposes, and less aggressive in social interactions, and can therefore be grouped more successfully. While there is some evidence that androgens can slightly dampen antibody responses, there is no major scientific reason not to use male animals.

The protein immunization in experimental animals

BALB/C mice were injected with hookworm egg protein in treatments 1st (P1), 2nd (P2), and 3rd (P3) with concentrations of P1 (5%), P2 (10%), and (15%). Meanwhile, the control was injected with negative stool samples. *Boosters* were carried out on the 7th, 14th, and 21st, while, on the 30th day, blood harvest was carried out. Furthermore, this study used variations in the concentration of injection based on the recommended dose for mice which are 5 ug per 100 ul injection. However, because the antigen used is in liquid form, the concentration was made directly into 5% and an additional variation of 10% and 15%.

Blood collection

Mice blood samples were obtained from the conjunctiva after 35 days using a capillary tube. It was drawn with minimum stress for mice, that is, by administering anesthesia before sampling to reduce stress and pain, by veterinary staff. Furthermore, blood collection was carried out under warm conditions to ensure smooth blood flow, no sudden noise which might trigger stress, and the sampling site was kept clean to avoid blood contamination. To obtain the antibody, the sample was placed in a plain vacutainer tube, frozen, and then centrifuged at 10,000 rpm for 5 min. The supernatant formed was collected and placed into a sterile tube and then stored at -20°C .

The spectrophotometric test

The protein globulin level was obtained by calculating the difference between total protein and serum albumin which was read by the photometer method. Globulins make up 40% of the total protein, the remainder consisting of 60% albumin.

Globulin formula (g/dl): Total protein – Albumin

Each solution mixture was homogenized and then incubated at 37° for 10 min, the sample absorbance was read to the blank at a wavelength of 546 nm.

Agglutination test

Mice serum from the control, as well as treatments 1, 2, and 3, were used as samples to check for the presence of antibody which is formed by the principle of agglutination. An antigen in this test is the hookworm egg protein concentration, meanwhile, the volume of each stage is 20 ul of both mice serum and antigen. Agglutination appeared in the form of grains on the slide and was observed for 2 min.

Ethical clearance

This study was conducted after obtaining *ethical clearance* from the ethics committee of FKM UNIMUS Semarang No.423/KEPK-FKM/UNIMUS/2020. The Head of the Clinical Pathology Laboratory, Muhammadiyah Semarang University, approved this study after receiving notification of *ethical clearance* result.

Results

Analysis of worm egg protein levels

The pure fecal suspension samples were examined for the number of hookworm eggs to predict the density. In each 20 μl , there were 3–4 eggs/field of view with a magnification of 100 times. This produced an image indicating that each milliliter of the pure sample contains 1000 hookworm eggs.

Examination of hookworm egg protein levels using the spectrophotometer method obtained the following data (Table 3):

Table 3: Hookworm egg protein level based on the concentration (%)

Hookworm egg protein concentration	Protein content (ug/ul)
Negative stool suspension	0.420
5%	39.305
10%	58.694
15%	72.679

The protein content of hookworm eggs is directly proportional to the concentration, hence, the higher the concentration, the higher the protein content. In the negative stool suspension, almost no protein content was found.

Analysis of serum globulin protein levels in mice

The examination of globulin protein levels using a spectrophotometric device on five mice serum per each treatment group after 35 days of immunization using worm egg protein produced the following results (Figure 2):

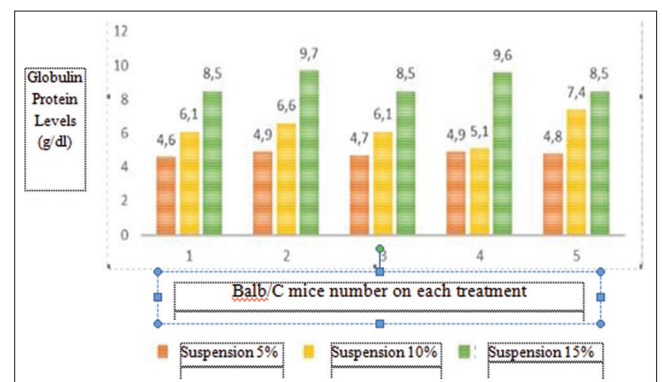


Figure 2: Graph of serum globulin protein levels in mice

After immunization with hookworm egg protein.

Based on Figure 3, the highest and lowest globulin protein content were found in the 15% hookworm egg protein suspension. The protein concentration is directly proportional to globulin protein levels in the serum of BALB/C mice.

The antibody concentration in ug/ul based on the injection of antigen (hookworm egg protein content) is illustrated in the following Table 4:

AQ5

Table 1: Total protein procedure

	Blank	Standard	Sample
Aquadest	20 ul	-	-
Lar Standard	-	20 ul	-
Sample	-	-	20 ul
Monoreagent (4R1:1R2)	1000 ul	1000 ul	-

AQ5

Table 2: Albumin procedure

	Blank	Standard	Sample
Aquadest	10 ul	-	-
Lar standard	-	10 ul	-
Sample	-	-	10 ul
Reagent	1000 ul	1000 ul	1000 ul

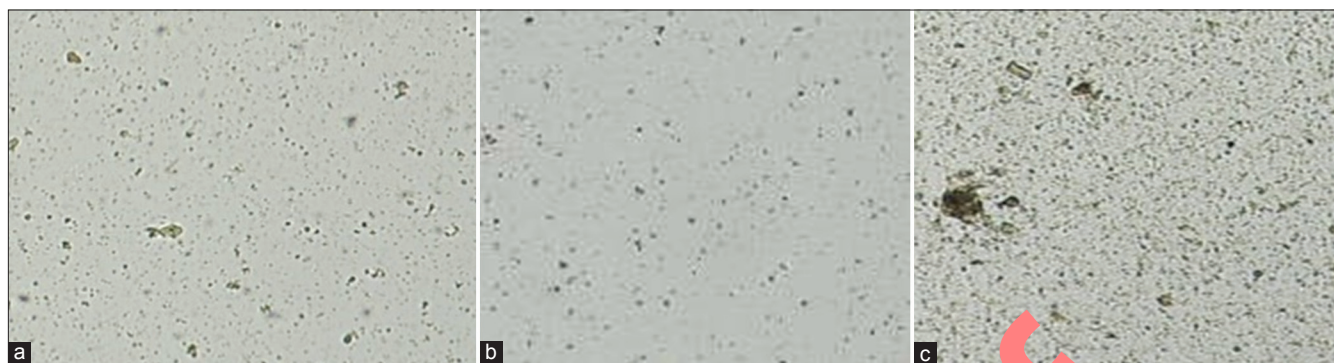


Figure 3: (a-c) Agglutination test results of mice serum and hookworm egg protein, where a and b showed negative results while c showed positive results

Table 4: Antibody concentration of egg serum BALB/c mice after immunization of antigen variation by spectrophotometric method

Stool Suspension Concentration	Hookworm egg protein content/Antigen (ug/ul)	Serum Protein Levels in BALB/c mice after immunization)/antibodies (ug/ul)
5%	39.305	43.167
10%	58.694	68.802
15%	72.679	110.713
50%	100.086	-
100%	167.090	-

Based on Table 5, the higher the dose given, the higher the antibody expression produced.

Table 5: BALB/c Mice serum agglutination test results with hookworm egg protein concentration

Hookworm egg protein concentration (Ag) (%)	BALB/c mice serum after immunization with hookworm egg protein					
	5%		10%		15%	
	AgI	*AgI	AgI	*AgI	AgI	*AgI
5% (39.305 ug/ul)	5	0	5	0	5	0
10% (58.694 ug/ul)	5	0	5	0	5	0
15% (72.679 ug/ul)	0	5	0	5	5	0
50% (100.086 ug/ul)	0	5	0	5	5	0
100% (167.090 ug/ul)	0	5	0	5	2	3

Information: AgI: The amount of agglutination, *AgI: The amount of agglutination does not occur.

Antigen and antibody which reacted with the same concentration all formed agglutination. The serum of Balb/C mice was also reacted with antigen concentrations of 50% and 100%. The result showed that when the antibody concentration was lower than the antigen, agglutination was faint, negative, or totally absent.

Based on the Chi-square statistical test, $p \leq 0.001$ was obtained, which indicates that there was a significant difference in the agglutination results of mice serum with 5%, 10%, and 15% fecal suspension. To determine the differences, the *Post hoc* test was carried out as follows:

Based on the *Post hoc* test, p-value between each group was below 0.05, this indicates that there were significant differences in concentrations of 5%, 10%, and 15% with serum antibody levels in BALB/c mice.

AQ5 Table 6: Statistical test results of agglutination of mice serum proteins to hookworm egg protein concentration

	Value	Df	(2-sided)
Pearson Chi-square	69.871*	14	0.000
Likelihood ratio	92.376	14	0.000
Linear-by-Linear Association	0.108	1	0.742
N of valid cases	75		

The results showed that hookworm egg suspension contains numerous proteins and the levels increase according to the percentage of the suspension. Hookworm egg suspension immunized in BALB/c mice also indicated an increase in globulin levels. This was further supported by the agglutination result which showed that there were significant differences in concentrations of 5%, 10%, and 15% with serum antibody levels in BALB/c mice.

The ability of an immunogen to stimulate antibody formation depends on the type, mode of entry, the receiving individual, and the sensitivity of the method used for detection [20], [21], the greater the immunogenic protein the better. This is evident from the increase in protein as one of the dominant components in antibodies. Furthermore, the results showed that each concentration of hookworm egg protein stimulates immune response formation characterized by increased levels of protein globulins in the experimental animals' serum. This increase activates components of the body's defenses such as lymphoid organs such as the spleen, lymph nodes, and lymphoid tissue associated with the intestines, including the tonsils where various antibodies are produced by stimulating B lymphocytes (plasma cells) [22], [23].

The modulating effect of worm infection on the immune system occurs due to changes in the balance of T-helper 1/T-helper 2 (Th1/Th2) to Th2 cells (Th2 polarized) [24]. Acute infection with intestinal worms stimulates the host immune response known as *Th2 response* [25]. This immune response polarization is characterized by an increase in Th2-specific cytokines such as *interleukin-4* (IL-4), *interleukin-5* (IL-5), *interleukin-13* (IL-13), as well as immunoglobulin E (IgE) [26], [27], [28] as demonstrated in the levels of the gamma globulin fraction in the total protein globulin. The results showed that the higher the concentration of hookworm egg protein, the higher the globulin response.

High levels of globulins are used as material to develop immune response reactions for a more practical and efficient serological-based hookworm egg examination method.

AQ5 Table 7: Post hoc statistical test results of serum agglutination of BALB/c mice to hookworm egg protein concentration

Multiple comparisons		Bonferroni level				
Globulin		Mean Difference (I-J)	Std. Error	Sig.	95% confidence interval	
(I) Stool Suspension	(J) Stool suspension				Lower bound	Upper bound
Stool Suspension 5%	Stool suspension 10%	-1.4800*	0.3861	0.007	-2.553	-0.407
	Stool suspension 15%	-4.1800*	0.3861	0.001	-5.253	-3.107
Stool Suspension 10%	Stool suspension 5%	1.4800*	0.3861	0.007	0.407	2.553
	Stool suspension 15%	-2.7000*	0.3861	0.001	-3.773	-1.627
Stool Suspension 15%	Stool suspension 5%	4.1800*	0.3861	0.001	3.107	5.253
	Stool suspension 10%	2.7000*	0.3861	0.001	1.627	3.773

*The mean difference is significant at the 0.05 level.

The presence of hookworm egg protein is an early indication used as the most potent immunogen component in the macromolecular proteins form, such as polysaccharides, or other synthetic polymers including *polyvinylpyrrolidone (PVP)*. Meanwhile, the configuration of the antigen-antibody molecule only produces antibodies that are specific to one type of antigen [29], [30]. The greater the immunogenic protein the better, meanwhile, protein increases in an organism as one of the dominant components in antibodies [31].

Agglutination test is one of the methods used to prove the presence of antigen and antibody reactions. One of the methods used is direct agglutination [32], which requires that the antigen and antibody react directly, with the antigen in the form of a particle or cell, hence, when it reacts with a specific antibody, clumps are formed [33].

Conclusion

The statistical tests showed that variations in the protein concentration of hookworm eggs produced antibodies indicated by the increase in serum protein of BALB/c mice, the occurrence of agglutination reactions, and the difference in agglutination results. These results are applicable as a reference for further studies to develop a new simple method for detecting hookworm using serological methods.

References

- Oswald WE, Stewart AE, Kramer MR, Endeshaw T, Zerihun M, Melak B, *et al.* Association of community sanitation usage with soil-transmitted helminth infections among school-aged children in Amhara Region, Ethiopia. *Parasit Vectors.* 2017;10(1):91. <https://doi.org/10.1186/s13071-017-2020-0>
PMid:28212668
- Bharti B, Bharti S, Khurana S. Worm infestation: Diagnosis, treatment, and prevention. *Indian J Pediatr.* 2018;85(11):1017-24. <https://doi.org/10.1007/s12098-017-2505-z>
PMid: 29127616
- Kabore A, Ibikounle M, Tougoue JJ, Mupoyi S, Ndombe M, Shannon S, *et al.* Initiating NTD programs targeting schistosomiasis and soil-transmitted helminthiasis in two provinces of the democratic republic of the Congo: Establishment of baseline prevalence for mass drug administration. *Acta Trop.* 2017;166:177-85. <https://doi.org/10.1016/j.actatropica.2016.11.023>
PMid:27888125
- da Luz RI, Linsuke S, Lutumba P, Hasker E, Boelaert M. Assessment of schistosomiasis and soil-transmitted helminths prevalence in school-aged children and opportunities for integration of control in local health services in Kwilu Province, the democratic republic of the Congo. *Trop Med Int Health.* 2017;22(11):1442-50. <https://doi.org/10.1111/tmi.12965>
PMid:28853206
- Dunn JC, Turner HC, Tun A, Anderson RM. Epidemiological surveys of, and research on, soil-transmitted helminths in Southeast Asia: A systematic review. *Parasit Vectors.* 2016;9(1):1-13. <https://doi.org/10.1186/s13071-016-1310-2>
- Rusjdi SR. *Tinjauan pustaka infeksi cacing dan alergi.* *J Kesehatan Andalas.* 2015;4(1):322-5. **AQ4**
- Khurana S, Sethi S. Laboratory diagnosis of soil-transmitted helminthiasis. *Trop Parasitol.* 2017;7(2):86-91. https://doi.org/10.4103/tp.TP_29_17
PMid:29114485
- Ngwese MM, Manouana GP, Moure PA, Ramharter M, Esen M, Adégnika AA. Diagnostic techniques of soil-transmitted helminths: Impact on control measures. *Trop Med Infect Dis.* 2020;5(2):93. <https://doi.org/10.3390/tropicalmed5020093>
PMid:32516900
- Kato M, Yan H, Tsuji NM, Chiba T, Hanyu Y. A method for inducing antigen-specific IgG production by *in vitro* immunization. *J Immunol Methods.* 2012;386(1-2):60-9. <https://doi.org/10.1016/j.jim.2012.08.019>
PMid:22974834
- Tang S, Liu Z, Li R, Chen Y, Zhao L, Shen H, *et al.* Preparation and identification of the polyclonal antibody against ATRX-C 2193-2492. *Xi Bao Yu Fen Zi Mian Yi Xue Za Zhi.* 2017;33(4):536-9.
PMid:28395727
- Malaei F, Rasaee MJ, Paknejad M, Latifi AM, Rahbarizadeh F. Production and characterization of monoclonal and polyclonal antibodies against truncated recombinant dickkopf-1 as a candidate biomarker. *Monoclon Antib Immunodiagn Immunother.* 2018;37(6):257-64. <https://doi.org/10.1089/mab.2018.0029>
PMid:30592704
- Francis JN, Thaburet JF, Bonnet D, Sizer PJ, Brown CB, Georges B. Increasing cellular immunogenicity to peptide-based vaccine candidates using a fluorocarbon antigen delivery system. *Vaccine.* 2015;33(8):1071-6. <https://doi.org/10.1016/j.vaccine.2014.12.061>
PMid:25573036
- Da Rocha MC, Barés ME, Braga MC. Quantification of viable helminth eggs in samples of sewage sludge. *Water Res.* 2016;103:245-55. <https://doi.org/10.1016/j.watres.2016.07.039>
PMid:27470467
- Roche AM, Richard AL, Rahkola JT, Janoff EN, Weiser JN.

- Antibody blocks the acquisition of bacterial colonization through agglutination. *Mucosal Immunol.* 2015;8(1):176-85. <https://doi.org/10.1038/mi.2014.55>
PMid:24962092
15. Wu D, Piszczek G. Rapid determination of antibody-antigen affinity by mass photometry. *J Vis Exp.* 2021;168:61784. <https://doi.org/10.3791/61784>
PMid:33616097
 16. McCormack PL. Immune globulin (human) 10% liquid: A review of its use in primary immunodeficiency disorders. *BioDrugs.* 2013;27(4):393-400. <https://doi.org/10.1007/s40259-013-0044-3>
PMid:23703447
 17. Vaillant AA, Jamal Z, Ramphul K. In: *StatPearls. Immunoglobulin.* Treasure Island (FL): StatPearls Publishing; 2021.
PMid:30035936
 18. Jolles S, Borrell R, Zouwail S, Heaps A, Sharp H, Moody M, *et al.* Calculated globulin (CG) as a screening test for antibody deficiency. *Clin Exp Immunol.* 2014;177(3):671-8. <https://doi.org/10.1111/cei.12369>
PMid:24784320
 19. He J, Pan H, Liang W, Xiao D, Chen X, Guo M, *et al.* Prognostic effect of albumin-to-globulin ratio in patients with solid tumors: A systematic review and meta-analysis. *J Cancer.* 2017;8(19):4002-10. <https://doi.org/10.7150/jca.21141>
PMid:29187875
 20. Kwong PD. What are the most powerful immunogen design vaccine strategies? A structural biologist's perspective. *Cold Spring Harb Perspect Biol.* 2017;9(11):1-7.
 21. Harding FA, Stickler MM, Razo J, DuBridge RB. The immunogenicity of humanized and fully human antibodies: Residual immunogenicity resides in the CDR regions. *MAbs.* 2010;2(3):256-65. <https://doi.org/10.4161/mabs.2.3.11641>
PMid:20400861
 22. Brown K, Sacks SH, Wong W. Tertiary lymphoid organs in renal allografts can be associated with donor-specific tolerance rather than rejection. *Eur J Immunol.* 2011;41(1):89-96. <https://doi.org/10.1002/eji.201040759>
PMid:21182080
 23. Chaplin DD. Overview of the immune response. *J Allergy Clin Immunol.* 2010;125(2):3-23. <https://doi.org/10.1016/j.jaci.2009.12.980>
PMid:20176265
 24. Anuradha R, Munisankar S, Dolla C, Kumaran P, Nutman TB, Babu S. Parasite antigen-specific regulation of Th1, Th2, and Th17 responses in strongyloides stercoralis infection. *J Immunol.* 2015;195(5):2241-50. <https://doi.org/10.4049/jimmunol.1500745>
PMid:26202988
 25. Nair MG, Herbert DR. Immune polarization by hookworms: Taking cues from T helper Type 2, Type 2 innate lymphoid cells and alternatively activated macrophages. *Immunol.* 2016;148(2):115-24. <https://doi.org/10.1111/imm.12601>
PMid:26928141
 26. Ahmed N, French T, Rausch S, Kühl A, Hemminger K, Dunay IR, *et al.* Toxoplasma co-infection prevents Th2 differentiation and leads to a helminth-specific Th1 response. *Front Cell Infect Microbiol.* 2017;7:341. <https://doi.org/10.3389/fcimb.2017.00341>
PMid:28791259
 27. Bao K, Reinhardt RL. The differential expression of IL-4 and IL-13 and its impact on Type-2 Immunity. *Cytokine.* 2015;75(1):25-37. <https://doi.org/10.1016/j.cyto.2015.05.008>
PMid:26073683
 28. Henry EK, Inclan-rico JM, Siracusa MC, State R. Type 2 cytokine responses: Regulating immunity to helminth parasites and allergic inflammation. *Curr Pharmacol Rep.* 2017;3(6):346-59. <https://doi.org/10.1007/s40495-017-0114-1>
PMid:29399438
 29. Armstrong B. Antigen-antibody reactions. In: *ISBT Science Series. 2nd ed., Vol. 3.* 2020. p. 68-80. <https://doi.org/10.1111/voxs.12590>
 30. Cepon-Robins TJ, Liebert MA, Urlacher SS, Schrock JM, Harrington CJ, Madimenos FC, *et al.* Market integration and soil-transmitted Helminth infection among the Shuar of Amazonian Ecuador. *PLoS One.* 2020;15(7):1-24. <https://doi.org/10.1371/journal.pone.0236924>
 31. Arur S, Schedl T. Generation and purification of highly-specific antibodies for detecting post-translationally modified proteins *in vivo*. *Nat Protoc.* 2014;9(2):375-95. <https://doi.org/10.1038/nprot.2014.017>
PMid:24457330
 32. Yeow N, Tabor RF, Garnier G. Direct measurement of IgM-Antigen interaction energy on individual red blood cells. *Colloids Surf B Biointerfaces.* 2017;155:373-8. <https://doi.org/10.1016/j.colsurfb.2017.04.038>
PMid:28454066
 33. Han S, Wang G, Xu N, Liu H. Quantitative assessment of the effects of oxidants on antigen-antibody binding *in vitro*. *Oxid Med Cell Longev.* 2016;2016:1480463. <https://doi.org/10.1155/2016/1480463>
PMid:27313823

Author Queries???

- AQ1: Kindly provide running title
 AQ2: Kindly check the affiliation
 AQ3: Kindly provide department
 AQ4: Kindly provide in English language
 AQ5: Kindly cite tables 1,2,6 and 7 in the text part and also check table chronological order
 AQ6: Kindly provide corresponding author email id
 AQ7: Kindly provide history details
 AQ8: Kindly review the sentence as it seems to be incomplete.